

## VENT SYSTEM COMPONENTS

### Hart & Cooley

#### Chimney Liner Kits

##### Chimney Liners - All Fuel



- Made from durable, corrosion-resistant type 316 stainless steel
- Designed to be used with wood, oil, coal and non-condensing gas-fired appliances
- Standard kit lengths of 25' and 35'
- Large 24"x24" flashing base
- Lifetime warranty

HVAC No.	MFG Part No.	Size	Length	Price
378649	5SLK25	5"	25'	\$841.97
378650	5SLK35	5"	35'	\$1,203.28
378652	6SLK25	6"	25'	\$1,064.24
378653	6SLK35	6"	35'	\$1,220.84
378654	7SLK25	7"	25'	\$1,117.12
378656	7SLK35	7"	35'	\$1,680.97
378657	8SLK25	8"	25'	\$1,220.86
378658	8SLK35	8"	35'	\$1,605.72

##### Chimney Liners - Gas



- Kits include flexible length, round top, flashing, mortar guard
- Standard kit lengths of 15', 25' and 35'
- Pull-downs stretch and lead the flexi-liner down the chimney
- Liner Material Aluminum 3003, 2-ply (0.005"each)
- Maximum Flue Gas Temperature 470°F
- Stretch Ratio 5:1 (approximate)
- Clearances 0" between liner and chimney interior 0" between combustible materials and chimney exterior
- Liner listed to UL1777 and ULC-S635
- Compatible with Type B gas vent systems
- Lifetime warranty

HVAC No.	MFG Part No.	Size	Length	Price
380210	3ALK25	3"	25'	\$150.30
380213	3ALK35	3"	35'	\$192.19
380212	4ALK25	4"	5'	\$163.09
380215	4ALK35	4"	35'	\$190.62
380214	5ALK25	5"	35'	\$195.43
380218	5ALK35	5"	35'	\$250.97
380216	55ALK25	5-1/2"	25'	\$221.45
380219	55ALK35	5-1/2"	35'	\$281.13
380217	6ALK25	6"	25'	\$217.10
380220	6ALK35	6"	35'	\$281.13
380221	7ALK25	7"	25'	\$329.81
380223	7ALK35	7"	35'	\$437.89
380222	8ALK25	8"	25'	\$364.81
380224	8ALK35	8"	35'	\$507.82

##### Aluminum Extension Kits - Gas



- 10' flexible liner length
- Includes coupler and fastener package
- UL-listed

HVAC No.	MFG Part No.	Size	Length	Price
380197	3ALKE10	3"	10'	\$55.21
380198	4ALKE10	4"	10'	\$60.29
380199	5ALKE10	5"	10'	\$73.94
380200	6ALKE10	6"	10'	\$83.58
380203	7ALKE10	7"	10'	\$115.54
380224	8ALK35	8"	35'	\$507.82

VENT SYSTEM COMPONENTS

## VENT SYSTEM COMPONENTS

### Hart & Cooley

#### Chimney Liner Kits

##### Chimney Liner Pull-Downs



HVAC No.	MFG Part No.	Size	Price
378685	3FX-PD	3"	\$26.40
378687	4FX-PD	4"	\$26.40
378688	5FX-PD	5"	\$23.31
380187	55FX-PD	5-1/2"	\$27.30
378689	6FX-PD	6"	\$25.18
378690	7FX-PD	7"	\$28.90
378692	8FX-PD	8"	\$28.90

##### Flex Connectors for ALK Liners



HVAC No.	MFG Part No.	Size	Price
380177	3ALK-FC	3"	\$11.40
380178	4ALK-FC	4"	\$11.40
380179	5ALK-FC	5"	\$11.40
380180	55ALK-FC	5-1/2"	\$13.84
380181	6ALK-FC	6"	\$13.84
380182	7ALK-FC	7"	\$16.67
380183	8ALK-FC	8"	\$20.56

#### All Fuel Chimney

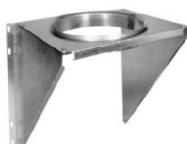
##### Chimney Pipe Sections



- Allows for installation between 16" centers and still provides 2" clearance from combustible material
- Secure twist-lock design couples chimney sections together with just a 1/8 turn. Locking bands secure joints
- Includes locking band
- 5"-8" sections overlap by 1 1/8", 10"-14" sections overlap by 1 1/4"
- Chimneys are sized according to the inner diameter and are available in 5" through 14"
- The outside diameter is 2" larger than the inside diameter

HVAC No.	MFG Part No.	Size	Length	Price
361449	6TLC6	ID 6" - OD 8"	6"	\$112.20
361448	6TLC12	ID 6" - OD 8"	12"	\$136.27
361447	6TLC18	ID 6" - OD 8"	18"	\$156.58
361446	6TLC24	ID 6" - OD 8"	24"	\$187.91
361445	6TLC36	ID 6" - OD 8"	36"	\$244.73
361444	6TLC48	ID 6" - OD 8"	48"	\$291.25
361481	7TLC6	ID 7" - OD 9"	6"	\$128.23
361480	7TLC12	ID 7" - OD 9"	12"	\$161.22
361479	7TLC18	ID 7" - OD 9"	18"	\$191.94
361478	7TLC24	ID 7" - OD 9"	24"	\$228.75
361477	7TLC36	ID 7" - OD 9"	36"	\$294.92
361476	7TLC48	ID 7" - OD 9"	48"	\$339.72
361513	8TLC6	ID 8" - OD 10"	6"	\$152.23
361512	8TLC12	ID 8" - OD 10"	12"	\$199.71
361511	8TLC18	ID 8" - OD 10"	18"	\$222.62
361510	8TLC24	ID 8" - OD 10"	24"	\$290.64
361509	8TLC36	ID 8" - OD 10"	36"	\$350.89
361508	8TLC48	ID 8" - OD 10"	48"	\$365.90

##### All-Fuel Accessories



HVAC No.	MFG Part No.	Description	Size	Price
361455	6TLCAWS	Wall Support	6"	\$160.55
361488	7TLCAWS	Wall Support	7"	\$195.78
366199	8TLCAWS	Wall Support	8"	\$240.95
393353	6TLCCSR	Ceiling Support	6"	\$146.94
462164	7TLCCSR	Ceiling Support	7"	\$243.94
390817	8TLCCSR	Ceiling Support	8"	\$156.09

## VENT SYSTEM COMPONENTS

### Hart & Cooley

#### All Fuel Chimney

##### All-Fuel Accessories

HVAC No.	MFG Part No.	Description	Size	Price
361459	6TLCRS	Roof Support	6"	\$100.28
361492	7TLCRS	Roof Support	7"	\$110.02
361523	8TLCRS	Roof Support	8"	\$128.23
361475	6TLCTC	Trim Ring	6"	\$84.57
361506	7TLCTC	Trim Ring	7"	\$101.54
462165	8TLCTC	Trim Ring	8"	\$143.56
361473	6TLCSPA	Stove Pipe Adaptor	6"	\$61.74
361622	7TLCSPA	Stove Pipe Adaptor	7"	\$70.58
361537	8TLCSPA	Stove Pipe Adaptor	8"	\$80.41

#### Rafter Radiation Shields

- Install immediately below the roof flashing, inside any enclosure



HVAC No.	MFG Part No.	Size	Price
361468	6TLCRRS	6"	\$58.09
361500	7TLCRRS	7"	\$67.66
361532	8TLCRRS	8"	\$76.17

#### Storm Collars

- Use in conjunction with roof flashing to keep precipitation out



HVAC No.	MFG Part No.	Size	Price
361463	6TLCSC	6"	\$43.97
361496	7TLCSC	7"	\$47.84
361527	8TLCSC	8"	\$41.83

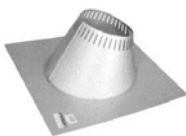
#### Firestop Radiation Shields



- Required where an enclosed chimney passes from a lower living space into an upper living space
- Maintains the mandatory 2" clearance to combustibles
- Joist Shield is used in floor/ceiling penetrations, other than those that include a ceiling support
- Joist Shield not required when passing through roof

HVAC No.	MFG Part No.	Size	Price
361467	6TLCFRS	6"	\$160.55
361499	7TLCFRS	7"	\$180.10
361531	8TLCFRS	8"	\$195.83

#### Adjustable Roof Flashing Kits, 0 to 6/12 Pitch



- Galvalume
- Includes storm collar
- All seams are sealed with silicone sealant

HVAC No.	MFG Part No.	Size	Price
361460	6TLCF6	6"	\$119.83
361493	7TLCF6	7"	\$153.51
361524	8TLCF6	8"	\$136.27

#### Adjustable Ceiling Plate



- Adapts to multiple roof pitches
- Matte black finish

HVAC No.	MFG Part No.	Size	Price
361472	6TLCACPT	6"	\$103.70
361504	7TLCACPT	7"	\$114.62
361536	8TLCACPT	8"	\$112.64

## VENT SYSTEM COMPONENTS

### Hart & Cooley

#### All Fuel Chimney

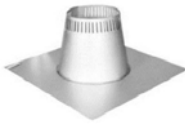
Adjustable Roof Flashing Kits, 6/12 to 12/12 Pitch



- Galvalume
- Includes storm collar
- All seams are sealed with silicone sealant

HVAC No.	MFG Part No.	Size	Price
361461	6TLCF12	6"	\$154.64
361494	7TLCF12	7"	\$169.58
361525	8TLCF12	8"	\$176.17

Tall Cone Flashing, 0/12 to 2/12 Pitch



- Galvalume
- Includes storm collar
- All seams are sealed with silicone sealant

HVAC No.	MFG Part No.	Size	Price
361462	6TLCHF	6"	\$164.20
361495	7TLCHF	7"	\$168.76
361526	8TLCHF	8"	\$181.73

#### Wall Bands



- Stainless steel construction
- Maintains the mandatory 2" clearance to combustibles
- Used above the tee, then every 8' thereafter

HVAC No.	MFG Part No.	Size	Price
361470	6TLCWB	6"	\$54.98
361502	7TLCWB	7"	\$66.32
361534	8TLCWB	8"	\$71.93

#### Stovepipe Adaptors



- Twist-lock for easy connection
- Use for quick and easy transition from black stovepipe to factory-built chimney

HVAC No.	MFG Part No.	Size	Price
361473	6TLCSPA	6"	\$61.74
361622	7TLCSPA	7"	\$70.58
361537	8TLCSPA	8"	\$80.41

#### Insulated Elbow Kits



- Elbows can be rotated to attain optimum offset and allow chimney to return to vertical before installing locking bands.
- May not be used outdoors.
- Elbow kits include:
  - 2 elbows (Exception: 12" and 14" sizes include four 15° elbows assembled into two 30° elbows)
  - 2 locking bands (Exception: 10", 12" and 14" sizes include four locking bands)
  - 1 elbow support
  - All hardware
- Must be used with all offset installations and will support 15' of chimney

HVAC No.	MFG Part No.	Description	Size	Price
361450	6TLCEK15	15 Degree	6"	\$399.48
361451	6TLCEK30	30 Degree	6"	\$515.17
361483	7TLCEK15	15 Degree	7"	\$462.95
361484	7TLCEK30	30 Degree	7"	\$597.28
361514	8TLCEK15	15 Degree	8"	\$507.70
361515	8TLCEK30	30 Degree	8"	\$657.07

## VENT SYSTEM COMPONENTS

### Hart & Cooley

#### All Fuel Chimney

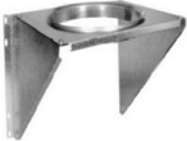
##### Rain Caps



- Twist lock connection
- Premium quality stainless steel designed for use in the elements

HVAC No.	MFG Part No.	Size	Price
361464	6TLCC	6"	\$148.22
361497	7TLCC	7"	\$184.04
361528	8TLCC	8"	\$215.33

##### Adjustable Wall Supports



- Includes top plate, side brackets, hardware, non-twist-lock insulated tee cap, and a long L-bracket
- Support between 30 feet and 74 feet of chimney, based on size and orientation

HVAC No.	MFG Part No.	Size	Price
361455	6TLCAWS	6"	\$160.55
361488	7TLCAWS	7"	\$195.78
366199	8TLCAWS	8"	\$240.95

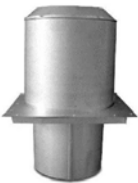
##### Insulated Tees with Tee Caps



- Two locking bands
- Uninsulated(single-wall) twist-lock tee cap for non-wall support applications only

HVAC No.	MFG Part No.	Size	Price
361453	6TLCT	6"	\$362.12
361486	7TLCT	7"	\$450.18
361517	8TLCT	8"	\$530.12

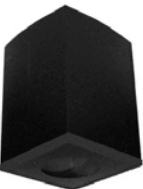
##### Attic Insulation Shields



- Not to be used for enclosed chimneys passing through attic
- For that application, use firestop radiation shield and rafter radiation shield

HVAC No.	MFG Part No.	Size	Price
361466	6TLCIS	6"	\$152.23
361498	7TLCIS	7"	\$161.22
361530	8TLCIS	8"	\$180.10

##### Cathedral Ceiling Support Boxes



- Supports a total of 38' of chimney with up to 15 feet below support
- Includes support clamp, allowing chimney pipe to pass below support
- Also acts as a firestop with use of trim plate
- 12/12 maximum pitch

HVAC No.	MFG Part No.	Size	Price
361458	6TLCCSS	6"	\$224.93
361491	7TLCCSS	7"	\$263.89
361522	8TLCCSS	8"	\$282.98

##### Shielding Insulation Wrap



HVAC No.	MFG Part No.	Size	Price
361442	TLCSI	12" x 48" x 2"	\$117.37

**VENT SYSTEM COMPONENTS**

**Hart & Cooley**

**B-Vent Pipe and Accessories**

Round Pipes



- 3" to 12" pipe/fitting couplers overlap 1-3/8" when joined together, assembled length is 1-3/8" less than listed length
- The allowable minimum clearance to combustibles is 1"
- Outside Diameter (OD) for sizes 3" through 6" is size plus 1/2"
- Outside Diameter (OD) for sizes 7" through 12" is size plus 1"

HVAC No.	MFG Part No.	Size	Listed Length	Price
78585	3RP6	3"	6"	\$18.73
163553	3RP12	3"	12"	\$18.75
163554	3RP18	3"	18"	\$20.71
163555	3RP24	3"	24"	\$27.13
163556	3RP36	3"	36"	\$35.70
163557	3RP48	3"	48"	\$42.08
163558	3RP60	3"	60"	\$50.38
163589	4RP6	4"	6"	\$18.50
163583	4RP12	4"	12"	\$20.06
163584	4RP18	4"	18"	\$24.86
163585	4RP24	4"	24"	\$31.77
163586	4RP36	4"	36"	\$41.14
163587	4RP48	4"	48"	\$50.02
163588	4RP60	4"	60"	\$64.64
163614	5RP6	5"	6"	\$20.66
163608	5RP12	5"	12"	\$24.95
163609	5RP18	5"	18"	\$27.91
163610	5RP24	5"	24"	\$36.29
163611	5RP36	5"	36"	\$44.73
163612	5RP48	5"	48"	\$58.21
163613	5RP60	5"	60"	\$69.57
163644	6RP6	6"	6"	\$23.39
163638	6RP12	6"	12"	\$26.94
163639	6RP18	6"	18"	\$32.49
163640	6RP24	6"	24"	\$45.49
163642	6RP48	6"	48"	\$68.19
163643	6RP60	6"	60"	\$80.07
163692	7RP12	7"	12"	\$39.12
163693	7RP18	7"	18"	\$49.58
163694	7RP24	7"	24"	\$64.53
163695	7RP36	7"	36"	\$84.38
163696	7RP48	7"	48"	\$107.27
163697	7RP60	7"	60"	\$118.02
163743	8RP12	8"	12"	\$81.96
163744	8RP18	8"	18"	\$90.57
163745	8RP24	8"	24"	\$72.05
163641	6RP36	6"	36"	\$53.45
163746	8RP36	8"	36"	\$94.10
163747	8RP48	8"	48"	\$121.78
163748	8RP60	8"	60"	\$140.55
163243	10RP18	10"	18"	\$115.61
163244	10RP24	10"	24"	\$139.29
163512	10RP36	10"	36"	\$175.79
163519	12RP18	12"	18"	\$168.55
163520	12RP24	12"	24"	\$198.45
163521	12RP36	12"	36"	\$239.38

VENT SYSTEM COMPONENTS

# VENT SYSTEM COMPONENTS

## Hart & Cooley

### B-Vent Pipe and Accessories

#### Male Adaptors



- Transitions from all brands of listed Type B Gas Vent to ALK Liner

HVAC No.	MFG Part No.	Size	Price
78568	3RAA	3"	\$25.89
163570	4RAA	4"	\$25.47
163599	5RAA	5"	\$27.70
163628	6RAA	6"	\$30.18
163684	7RAA	7"	\$50.23
163734	8RAA	8"	\$56.68

#### Female Adaptors



- Adapts Hart & Cooley vent to other brands of B vent

HVAC No.	MFG Part No.	Size	Price
163561	3RRA	3"	\$36.86
163590	4RRA	4"	\$37.86
163617	5RRA	5"	\$39.88
163647	6RRA	6"	\$45.00

#### Female B-Vent Adaptors



HVAC No.	MFG Part No.	Size	Price
163548	3RLA	3"	\$21.88
462166	4RLA	4"	\$38.03
163605	5RLA	5"	\$28.29
163635	6RLA	6"	\$30.01
163690	7RLA	7"	\$46.26
163740	8RLA	8"	\$51.51

#### Increases



HVAC No.	MFG Part No.	Size	Price
163549	3RN4	3" to 4"	\$34.71
163550	3RN5	3" to 5"	\$39.86
163578	4RN5	4" to 5"	\$36.71
163579	4RN6	4" to 6"	\$38.64
163580	4RN7	4" to 7"	\$91.54
163606	5RN6	5" to 6"	\$39.86
78634	5RN7	5" to 7"	\$84.29
78663	6RN7	6" to 7"	\$88.87
163637	6RN8	6" to 8"	\$90.66
345350	7RN8	7" to 8"	\$106.76
163742	8RN10	8" to 10"	\$126.11
163509	8RN12	8" to 12"	\$134.90

#### Rain Caps



- Designed to resist nesting birds
- Exceptional performance in windy conditions

HVAC No.	MFG Part No.	Size	Price
163547	3RHW	3"	\$27.15
163577	4RHW	4"	\$26.82
163604	5RHW	5"	\$28.20
163634	6RHW	6"	\$43.18
460231	7RHW	7"	\$61.53
455811	8RHW	8"	\$80.77

#### Universal Cap

HVAC No.	MFG Part No.	Size	Price
456306	10CU	10"	\$168.67

VENT SYSTEM COMPONENTS

## VENT SYSTEM COMPONENTS

### Hart & Cooley

#### B-Vent Pipe and Accessories

##### Universal Cap

HVAC No.	MFG Part No.	Size	Price
460630	12CU	12"	\$224.13

##### Adjustable Elbows



HVAC No.	MFG Part No.	Description	Size	Price
163449	3REA60	45 and 60 Degree	3"	\$27.91
163544	3REA90	90 Degree	3"	\$41.87
163572	4REA60	45 and 60 Degree	4"	\$32.55
163573	4REA90	90 Degree	4"	\$52.04
163600	5REA60	45 and 60 Degree	5"	\$36.27
163601	5REA90	90 Degree	5"	\$59.03
163630	6REA60	45 and 60 Degree	6"	\$42.80
163631	6REA90	90 Degree	6"	\$67.91
163686	7REA45	45 Degree	7"	\$64.53
163687	7REA90	90 Degree	7"	\$114.51
163736	8REA45	45 Degree	8"	\$68.54
163737	8REA90	90 Degree	8"	\$118.94
163240	10REA45	45 Degree	10"	\$164.30
163516	12REA45	45 Degree	12"	\$202.40

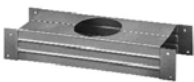
##### Adjustable Length Pipes



- Overlap minimum: 1"
- Overlap maximum (12" length): 10"
- Overlap maximum (18" length): 16"

HVAC No.	MFG Part No.	Size	Listed Length	Price
163559	3RPA	3"	12"	\$20.71
163581	4RPA	4"	12"	\$23.67
163615	5RPA	5"	12"	\$27.01
163645	6RPA	6"	12"	\$30.28
163698	7RPA	7"	18"	\$57.31
163749	8RPA	8"	18"	\$56.72
163246	10RPA	10"	18"	\$127.26
163522	12RPA	12"	18"	\$174.57

##### Firestop Spacers



- Fits 2"x6" wall
- Available in 4" only

HVAC No.	MFG Part No.	Size	Price
163576	4RFS	4"	\$26.42

##### Wall Thimbles



- Provides necessary clearance to combustibles
- Sleeve is adjustable from 3" to 6"

HVAC No.	MFG Part No.	Size	Price
163568	3RWT	3"	\$24.95
163597	4RWT	4"	\$25.85
163626	5RWT	5"	\$27.47
163656	6RWT	6"	\$35.87
163706	7RWT	7"	\$41.98
163757	8RWT	8"	\$88.58



## VENT SYSTEM COMPONENTS

### Hart & Cooley

#### B-Vent Pipe and Accessories

##### Wall Brackets



- 8" through 12" bracket used with perforated pipe strap (supplied by others)

HVAC No.	MFG Part No.	Size	Price
78594	3RWB	3"	\$16.91
78623	4RWB	4"	\$14.97
78653	5RWB	5"	\$16.86
163655	6RWB	6"	\$16.91
163705	7RWB	7"	\$20.73
163756	8RWB	8"	\$24.74
163514	10RWB	10"	\$39.38
163528	12RWB	12"	\$30.98

##### Adjustable Roof Flashing, 0 to 6/12 Pitch



HVAC No.	MFG Part No.	Size	Price
163545	3RF	3"	\$19.61
78601	4RF	4"	\$19.61
163602	5RF	5"	\$28.73
163632	6RF	6"	\$44.42
163688	7RF	7"	\$53.55
163738	8RF	8"	\$58.74
163241	10RF	10"	\$73.54
163517	12RF	12"	\$87.93

##### Adjustable Roof Flashing, 6/12 to 12/12 Pitch



HVAC No.	MFG Part No.	Size	Price
163546	3RFA	3"	\$47.69
163575	4RFA	4"	\$49.48
163603	5RFA	5"	\$50.97
163633	6RFA	6"	\$65.27
163689	7RFA	7"	\$105.97
163739	8RFA	8"	\$127.66

##### Tall Cone Roof Flashings



HVAC No.	MFG Part No.	Size	Price
163566	3RTF	3"	\$35.78
163595	4RTF	4"	\$39.86
78652	5RTF	5"	\$46.73
163654	6RTF	6"	\$57.29
163704	7RTF	7"	\$68.94
163755	8RTF	8"	\$76.61
163513	10RTF	10"	\$94.10
163527	12RTF	12"	\$106.05

##### Storm Collars



HVAC No.	MFG Part No.	Size	Price
163562	3RS	3"	\$4.83
78618	4RS	4"	\$4.79
78646	5RS	5"	\$10.79
163648	6RS	6"	\$11.53
163700	7RS	7"	\$14.78
163751	8RS	8"	\$14.30
163247	10RS	10"	\$19.07
163523	12RS	12"	\$31.63

VENT SYSTEM COMPONENTS

## VENT SYSTEM COMPONENTS

### Hart & Cooley

#### B-Vent Pipe and Accessories

##### Pipe Collars



- Covers rough openings

HVAC No.	MFG Part No.	Size	Price
163560	3RPC	3"	\$8.09
163582	4RPC	4"	\$8.09
163616	5RPC	5"	\$9.16
163646	6RPC	6"	\$10.23
163699	7RPC	7"	\$15.23
163750	8RPC	8"	\$31.12

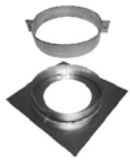
##### Gripper Supports



- Supports 30' of pipe
- Acts as a firestop

HVAC No.	MFG Part No.	Size	Price
350504	3RGS	3"	\$25.47
350506	4RGS	4"	\$30.58
350507	5RGS	5"	\$35.62
350508	6RGS	6"	\$36.31
455880	7RGS	7"	\$40.19
462167	8RGS	8"	\$75.75
456307	10RGS	10"	\$47.17

##### Firestop Supports



HVAC No.	MFG Part No.	Size	Price
462168	3FSP	3"	\$62.27
462169	4FSP	4"	\$41.24
461197	5FSP	5"	\$45.93
462170	6FSP	6"	\$53.15
455879	7FSP	7"	\$35.93
462171	8FSP	8"	\$84.99

##### Tee Caps



HVAC No.	MFG Part No.	Size	Price
163565	3RTC	3"	\$6.20
163594	4RTC	4"	\$6.20
163623	5RTC	5"	\$8.09
163653	6RTC	6"	\$8.51
163703	7RTC	7"	\$16.00
163754	8RTC	8"	\$17.87
163250	10RTC	10"	\$30.16
163526	12RTC	12"	\$57.56

##### Draft Hood Connectors



HVAC No.	MFG Part No.	Size	Price
78569	3RDH	3"	\$15.18
163571	4RDH	4"	\$17.35
163472	5RDH	5"	\$18.75
163629	6RDH	6"	\$19.36
163685	7RDH	7"	\$30.70
163735	8RDH	8"	\$29.48
163239	10RDH	10"	\$41.43
163515	12RDH	12"	\$65.73

VENT SYSTEM COMPONENTS

## VENT SYSTEM COMPONENTS

### Hart & Cooley

#### B-Vent Pipe and Accessories

##### Tees



HVAC No.	MFG Part No.	Size	Price
163564	3RT3	3" x 3" x 3"	\$50.90
163593	4RT4	4" x 4" x 4"	\$57.79
163620	5RT3	5" x 5" x 3"	\$68.75
78649	5RT4	5" x 5" x 4"	\$68.75
78650	5RT5	5" x 5" x 5"	\$68.75
462172	6RT3	6" x 6" x 3"	\$134.46
163651	6RT4	6" x 6" x 4"	\$77.57
78679	6RT6	6" x 6" x 6"	\$77.57
163702	7RT7	7" x 7" x 7"	\$102.14
163753	8RT8	8" x 8" x 8"	\$114.20
163249	10RT10	10" x 10" x 10"	\$274.45
163525	12RT12	12" x 12" x 12"	\$334.47

### Tjernlund Products

#### Controls



HVAC No.	MFG Part No.	Description	Price
118503	PS2501	Adjustable Pressurestat with Differential Air Switch	\$329.78
118502	PS1505	Fan Proving Switch for AutoDraft Inducers	\$191.29
118506	SC1	Speed Control for Duct Booster	\$99.81
161178	UC1	UC1 Universal Interlock Control	\$310.95
161315	MAC-1E	Multiple Appliance Control, For UC-1, Adds One Appliance	\$334.61
161314	MAC-4E	Multiple Appliance Control, For UC-1, Adds Up to Four Appliances	\$796.55

#### Duct Boosters



HVAC No.	MFG Part No.	Description	Price
118470	EF-6	Duct Booster Fan, 120V-30 Watt-.40A	\$122.98
118471	EF-8	Duct Booster Fan, 120V-56 Watt-1.1A	\$192.57

#### Inline Draft Inducers



HVAC No.	MFG Part No.	Fits Duct Diameters	Max MBH Input	Price
118466	DJ-3	3", 4", 5", 6"	100	\$313.32
118452	D-3	5", 6", 7", 8"	320	\$392.55
118487	I	8", 9", 10" 12"	1030	\$1,007.18
118488	IL	10", 12", 14", 16", 18"	650	\$1,161.57
118518	XL	16", 18", 20", 24"	1500	\$2,475.94
118475	HD	20", 24"	3500	\$8,888.88

#### Side Shot Venter for Oil Heaters



HVAC No.	MFG Part No.	Capacity Natural and LP Gas	Flame Retention Oil Burner	Price
118507	SS1	50 - 160 MBH	70 - 220 MBH	\$2,034.77
118508	SS2	40 - 125 MBH	70 - 168 MBH	\$1,555.34

VENT SYSTEM COMPONENTS

# VENT SYSTEM COMPONENTS

## Tjernlund Products

### Vent Hoods



HVAC No.	MFG Part No.	Description	Price
118510	VH-1-3	Side Wall Vent Hood, 3"	\$230.54
118511	VH-1-4	Side Wall Vent Hood, 4"	\$280.71
118512	VH-1-6	Side Wall Vent Hood, 6"	\$283.50
118513	VH-1-8	Side Wall Vent Hood, 8"	\$636.13
118509	VH-1-10	Side Wall Vent Hood, 10"	\$695.23

### Sidewall Vent System, 4" Vent Pipe Diameter



HVAC No.	MFG Part No.	Max MBH Input	Price
118472	GPAK1	4" Flue, Up to 120MBH	\$1,100.11
118474	GPAKJ	4" Flue, Up to 250MBH	\$1,093.07

### Power Venters



HVAC No.	MFG Part No.	Description	Price
160046	HSJ	4" Flue, Up to 125MBH/Gas, 75MBH/Oil	\$721.43
160047	HS1	4" or 6" Flue, Up to 300MBH/Gas, 200MBH/Oil	\$728.26
160048	HS2	6" or 8" Flue, Up to 600MBH/Gas, 450MBH/Oil	\$1,035.38
118478	HS3	8" or 10" Flue, Up to 700MBH/Gas	\$1,841.20
118479	HS4	8", 10" or 12" Flue, Up To 1200MBH/Gas	\$2,412.92
118480	HS5	10", 12" or 14" Flue, Up To 1825MBH/Gas	\$3,380.18

### Water Heater Vent



HVAC No.	MFG Part No.	Description	Price
118517	WHK-I	Power Venter Interlock Kit for Water or Pool Heaters	\$437.47

## Field Controls

### Barometric Draft Control



- Type MG1 dual acting barometric dampers available from 4" - 9"
- Type M+MG2 dual acting barometric dampers available from 10" - 32"

HVAC No.	MFG Part No.	Size	Action	Suitable For	Price
462174	5MG1	5"	Double Acting	Gas	\$167.87
62358	5RC	5"	Single Acting	Oil, Wood, Coal	\$75.75
62359	6MG1	6"	Double Acting	Gas	\$175.27
62360	6RC	6"	Single Acting	Oil, Wood, Coal	\$70.06
62361	7MG1	7"	Double Acting	Gas	\$187.32
62362	7RC	7"	Single Acting	Oil, Wood, Coal	\$101.35
62363	8MG1	8"	Double Acting	Gas	\$242.26
62364	8RC	8"	Single Acting	Oil, Wood, Coal	\$134.40
62365	9MG1	9"	Double Acting	Gas	\$265.76
62366	9RC	9"	Single Acting	Oil, Wood, Coal	\$200.17
62348	10M+MG2	10"	Triple Acting	Oil, Wood, Coal, Gas	\$453.16
62349	12M+MG2	12"	Triple Acting	Oil, Wood, Coal, Gas	\$505.11
62350	14M+MG2	14"	Triple Acting	Oil, Wood, Coal, Gas	\$655.85
62351	16M+MG2	16"	Triple Acting	Oil, Wood, Coal, Gas	\$857.41
62352	18M+MG2	18"	Triple Acting	Oil, Wood, Coal, Gas	\$1,140.32
62353	20M+MG2	20"	Triple Acting	Oil, Wood, Coal, Gas	\$1,363.01
62354	24M+MG2	24"	Triple Acting	Oil, Wood, Coal, Gas	\$1,652.81
62355	28M+MG2	28"	Triple Acting	Oil, Wood, Coal, Gas	\$2,051.07
62356	32M+MG2	32"	Triple Acting	Oil, Wood, Coal, Gas	\$2,623.19

# VENT SYSTEM COMPONENTS

## Field Controls

### Field Accessory Items



HVAC No.	MFG Part No.	Description	Price
319286	46347400	Float Switch, 72" Leads	\$20.37
62370	GSK-3	Gas Spillage Sensing Switch, 24 VAC	\$79.21

## Power Venter



HVAC No.	MFG Part No.	Size	Action	Suitable For	Price
160655	SWG-4HD	4-7" Flue	Gas/Oil	Up to 170MBH/Gas, 1.10GPH/Oil	\$720.95
417271	SWG-6	5-7" Flue	Gas/Oil	Up to 416MBH/Gas, 2.65GPH/Oil	\$1,014.51

## Vent Damper



HVAC No.	MFG Part No.	Size	Notes	Price
411112	46486901	4"	Harness Not Included	\$280.48
411113	46487001	5"	Harness Not Included	\$291.59
411114	46487101	6"	Harness Not Included	\$297.40
411115	46487201	7"	Harness Not Included	\$309.02
411116	46487301	8"	Harness Not Included	\$354.61
448446	46487401	9"	Harness Not Included	\$399.61
411117	46579100	Vent Damper Harness, Fits All Sizes		\$151.64

VENT SYSTEM COMPONENTS

**VENT SYSTEM COMPONENTS**

**Gas Chimney Liner Sizing Guide**

# FLEXI-LINER®

## FLEXI-LINER® SIZER

Corrugated Chimney Liner for Gas Fired Appliances

### SINGLE APPLIANCE

Height, Ft "H"	Connector Type: Double or Single Wall "C"	Lateral Offset "L"	FLEXI-LINER Diameter "D" (inches)																																									
			3"						4"						5"						5.5"						6"						7"						8"					
			Appliance Input Rating Limits (x1000 BTU/h) Reduced 20% from Type B Vent Tables																																									
			FAN		NAT		FAN		NAT		FAN		NAT		FAN		NAT		FAN		NAT		FAN		NAT		FAN		NAT		FAN		NAT											
Min	Max	Max	Min	Max	Max	Min	Max	Max	Min	Max	Max	Min	Max	Max	Min	Max	Max	Min	Max	Max	Min	Max	Max	Min	Max	Max	Min	Max	Max															
15'	Double	2" 5" 10"	11 55 22 52 29 47	38 30 104 33 40 97	15 109 74 70 66 66	20 181 39 175 51 165	120 114 108 108	21 226 44 220 58 208	150 144 144 144	22 271 49 264 64 252	180 174 166 166	38 380 64 370 84 356	253 240 238 230	45 506 76 496 99 480	331 320 320 305	25'	Double	2" 5" 10"	10 62 21 59 28 54	43 29 41 21 38 113	14 126 85 82 76 76	16 213 37 207 49 196	140 134 128 128	18 268 42 261 55 249	176 170 174 174	19 324 46 315 61 302	212 206 206 206	30 458 60 448 79 432	296 289 289 289	37 615 71 603 93 585	402 394 384 384													
	Single	2" 5" 10"	38 55 51 50 NA NA	38 31 35 31 95 93	57 109 75 102 69 63	74 70 69 69 128 161	80 180 102 173 112 105	119 112 123 217 155 204	149 143 143 143	115 270 144 261 182 246	179 174 174 174	148 378 182 367 228 350	251 238 238 227	187 505 231 493 284 474	330 320 320 305																													
30'	Double	2" 5" 10"	9 65 21 62 27 56	45 28 43 28 40 37	13 133 133 128 120 82	14 226 36 220 48 210	148 141 141 137	16 286 41 278 54 267	186 180 180 173	18 346 45 337 59 324	224 218 218 209	27 490 58 480 77 464	315 308 308 297	33 661 69 649 91 630	426 419 406 406																													
	Single	2" 5" 10"	37 64 49 59 NA NA	45 42 42 42 NA NA	55 131 72 126 91 115	89 85 85 85	76 225 98 217 122 204	146 138 138 134	93 284 117 275 147 261	185 178 178 170	109 343 136 334 171 318	223 217 206 206	139 488 171 476 213 456	314 306 306 294	175 658 215 645 265 622	426 417 417 401																												
35'	Double	2" 5" 10"	9 66 21 63 27 57	46 28 131 89 37 124	13 136 136 131 84 84	14 234 36 227 47 217	152 146 146 141	16 296 40 289 53 277	192 186 186 178	17 359 45 350 58 337	231 225 225 216	26 511 57 500 76 484	325 319 319 308	31 691 68 679 90 660	444 435 435 422																													
	Single	2" 5" 10"	37 65 49 60 NA NA	46 42 42 42 91 118	55 135 72 129 91 118	91 87 87 87	75 232 97 224 121 211	151 143 143 138	92 294 116 285 145 271	190 184 184 175	108 356 135 347 169 330	230 224 224 213	138 508 169 496 211 476	324 316 316 304	173 688 212 674 262 651	442 433 433 417																												
45'	Double	2" 5" 10"	8 68 20 65 26 60	48 27 138 93 NA 36	12 143 143 131 131 89	14 249 35 242 46 232	161 155 155 148	15 317 39 309 51 298	203 197 197 190	16 385 44 376 57 364	244 239 239 231	23 552 56 541 74 525	346 340 340 330	28 750 66 738 97 719	476 468 468 455																													
	Single	2" 5" 10"	36 66 48 63 NA NA	48 48 NA 71 NA 125	54 141 136 91 NA 90	95 91 91 91	74 247 95 239 119 226	160 153 153 145	90 315 114 306 142 291	201 195 195 186	105 383 132 373 164 356	243 237 237 227	135 549 166 537 206 517	344 337 337 325	170 747 207 733 256 709	474 465 465 450																												

### MULTIPLE APPLIANCES

Height, Ft "H"	Connector Type: Double or Single Wall "C"	FLEXI-LINER Diameter "D" (inches)																																			
		4"						5"						5.5"						6"						7"						8"					
		Combined Appliance Input Rating Limits (x1000 BTU/h) Reduced 20% from Vertical Common Vent																																			
		FAN Only		FAN & NAT Only		FAN Only		FAN & NAT Only		FAN Only		FAN & NAT Only		FAN Only		FAN & NAT Only		FAN Only		FAN & NAT Only		FAN Only		FAN & NAT Only		FAN Only		FAN & NAT Only									
15'	Double	100	90	73	156	131	115	191	157	140	226	182	165	342	282	224	445	355	292																		
	Single	97	86	70	151	127	112	186	152	136	220	177	160	333	274	219	435	347	286																		
25'	Double	116	104	88	184	157	138	227	189	168	270	221	198	409	341	268	537	434	350																		
	Single	111	100	84	178	152	135	220	183	163	262	214	192	398	332	261	524	423	342																		
30'	Double	122	110	94	195	168	148	242	203	181	289	238	213	438	367	288	576	468	376																		
	Single	116	106	90	189	162	144	235	196	175	280	229	206	426	357	279	562	456	367																		
35'	Double	125	113	97	202	175	154	252	212	188	301	249	222	457	385	301	603	492	392																		
	Single	119	109	93	195	168	150	243	204	182	291	239	214	444	374	291	588	479	382																		
45'	Double	131	119	104	216	188	165	271	230	202	325	271	239	494	420	326	656	541	424																		
	Single	124	114	99	208	180	161	261	220	195	314	260	229	480	407	316	640	526	413																		

See Rigid Connector Sizing Table below for Multiple Appliance Systems

VENT SYSTEM COMPONENTS

# VENT SYSTEM COMPONENTS

## Gas Chimney Liner Sizing Guide

**FLEXI-LINER®**

Aluminum Flexible Chimney Liner and Gas Vent Connector

Installation Instructions

### RIGID CONNECTOR - SIZING INFORMATION

#### VENT CONNECTOR CAPACITIES

FOR MULTIPLE CATEGORY 1 APPLIANCES CONNECTED TO A COMMON VENT

System Height, Ft	Connector Type: Double or Single Wall	Connector Rise, Ft	3"			4"			5"			6"		
			Fan		Nat	Fan		Nat	Fan		Nat	Fan		Nat
			Min	Max	Max	Min	Max	Max	Min	Max	Max	Min	Max	Max
15	Double	1	21	50	30	33	89	53	47	142	83	64	220	120
		2	22	53	35	35	96	63	49	153	99	66	235	142
		3	24	55	40	36	102	71	51	163	111	68	248	160
	Single	1	NA	NA	29	79	87	52	116	138	81	177	214	116
		2	NA	NA	34	83	94	62	121	150	97	185	230	138
		3	NA	NA	39	87	100	70	127	160	109	193	243	157
25	Double	1	21	58	32	32	106	58	46	169	90	61	267	130
		2	22	61	38	34	112	68	48	179	107	63	279	154
		3	23	63	43	35	117	77	49	187	120	65	290	173
	Single	1	48	58	31	78	104	56	114	164	87	172	258	125
		2	52	61	37	82	109	66	119	174	104	180	271	148
		3	55	63	41	86	113	74	124	183	117	188	282	168
30	Double	1	20	62	33	31	113	59	45	181	93	60	288	134
		2	21	64	39	33	118	70	47	190	110	62	299	158
		3	22	66	44	34	123	79	48	198	124	64	309	178
	Single	1	47	60	31	77	110	57	112	175	89	169	278	129
		2	51	62	37	81	115	67	117	185	106	177	290	152
		3	54	64	42	85	119	76	122	193	120	185	300	172
35	Double	1	20	64	34	31	118	60	45	190	95	59	303	137
		2	21	66	40	33	123	72	47	198	112	61	314	162
		3	22	68	45	34	128	81	48	206	127	63	323	182
	Single	1	47	62	32	77	115	58	111	183	91	167	293	131
		2	51	64	38	81	119	68	116	193	108	175	304	155
		3	54	66	43	85	123	78	121	200	121	183	313	176
45	Double	1	19	69	35	30	128	63	44	207	99	58	334	142
		2	21	71	42	32	132	75	46	215	117	60	343	169
		3	22	73	47	33	137	84	47	221	132	62	352	190
	Single	1	46	67	33	76	124	59	110	199	94	164	322	135
		2	50	69	39	80	128	71	115	208	111	172	331	161
		3	53	70	44	84	132	81	120	214	122	180	340	183

NA means "Not Allowed"

VENT SYSTEM COMPONENTS

# VENT SYSTEM COMPONENTS

## Gas Chimney Liner Sizing Guide

**SINGLE APPLIANCE**

**MULTIPLE APPLIANCES**

**GENERAL VENTING REQUIREMENTS**

- A1. The air space around an installed Flexi-Liner System must not be used to vent other appliances.
- A2. A Flexi-Liner System venting more than one appliance shall not be smaller in diameter than the outlet of the largest appliance being served.
- A3. For single appliance installations, the Flexi-Liner System may be smaller in diameter than the outlet of the appliance being served, providing:
  - a) the vent height is at least 10ft.
  - b) the liner size is not more than one size smaller.
  - c) the "FAN MAX" is reduced by 10% if the appliance is "fan assisted".
  - d) the outlet is larger than 4" if the appliance is "natural draft".
- A4. Reduce Flexi-Liner capacity for elbows (turns) as follows:
  - A4.1. Single Appliance (two 90° elbows for total vent system are factored into chart)
    - a) **In USA** - for each additional elbow up to 45°, reduce capacity by 5%.  
- for each additional elbow 45°-90°, reduce capacity by 10%.
    - b) **In CDA** - for each additional elbow 90° reduce capacity by 10% for NAT and 15% for FAN.
  - A4.2. Multiple Appliances (90° turn at the bottom of liner is factored into chart)
    - a) **In USA** - for each elbow in the common vent up to 45°, reduce capacity by 5%.  
- for each elbow 45°-90°, reduce capacity by 10%.
    - b) **In CDA** - for each 90° elbow in the common vent, reduce capacity by 10% for NAT and 15% for FAN.

Common Vent manifold fitting is part of the connector sizing coming to it.
- A5. Do not use these tables if the vent system contains any device (such as a vent damper, draft regulator or heat reclaimer, etc.), which retards the flow of vent gases. Refer to instructions provided by the manufacturer of the device for vent instructions.
- A6. Interpolation between the table entries is permitted, extrapolation beyond the table entries is not permitted.
- A7. Vent connector sizes for multiple appliances are derived from tables included in the following national gas codes: NFPA 54 (USA) and B149.1 (CDA).
- A8. These tables are derived from the National Fuel Gas Code (NFPA 54 & CSA-B149). Current code data and information will supercede these sizing instructions if there is any discrepancy between them.

**ADDITIONAL COMMENTS**

- B1. Flexi-Liner System is UL/ULC Listed for relining existing masonry or factory-built chimneys and vents serving Category I natural gas or propane fired appliances.
- B2. Insulating of Flexi-Liner System is a benefit to the installation but not always essential to effective operation of this venting system. Consult the Flexi-Sleeve installation instructions for application guidelines.
- B3. The use of a "Y" fitting rather than a "T" fitting is recommended when common venting into a manifold system.
- B4. **AVOID CONDENSATION and/or SPILLAGE OF FLUE GASES:**
  - a) Install Flexi-Liner as per installation instructions.
  - b) Set up appliances as per appliance installation instructions.
- B5. Contact local authorities for restrictions and regulations in your area.
- B6. Venting gas fired appliances into masonry chimneys is prohibited, unless a Listed liner such as Flexi-Liner, or a tile liner conforming to Code is utilized. Oversized, misaligned and/or cracked tiles DO NOT constitute a Code liner.

Printed in Canada

---

FLEXI-LINER®

VENT SYSTEM COMPONENTS