

# VENTILATION

## Louvers and Dampers

### Aluminum Dampers



- Available in Single, Parallel, Opposed Blade and Air Foil Construction
- Multiple finishes and construction options
- Various actuators available
- Call for pricing

HVAC No.	MFG Part No.	Description	Size Range Available
Special Order Item	A11	Single Blade Damper	6" x 6" - 120" x 120"
Special Order Item	A28	Low Leak Air Foil Damper	6" x 6" - 120" x 120"
Special Order Item	AD5	Parallel Air Foil Damper	6" x 6" - 120" x 120"
Special Order Item	T28B	Insulated Air Foil Damper	6" x 6" - 120" x 120"

### Steel Dampers



- Available in Single, Parallel, Opposed Blade and Air Foil Construction
- Multiple finishes and construction options
- Various actuators available
- Call for pricing

HVAC No.	MFG Part No.	Description	Size Range Available
Special Order Item	D150VCD	Single Blade Balancing Damper	6" x 6" - 36" x 12"
Special Order Item	D1770	Control Damper	6" x 6" - 36" x 12"
Special Order Item	D395	Low Leak Control Damper	6" x 6" - 36" x 12"
Special Order Item	DID200	Insulated Steel Damper	6" x 6" - 36" x 12"
Special Order Item	GB1	5" balancing damper	6" x 6" - 36" x 12"
Special Order Item	I11	3.5" control damper	6" x 6" - 36" x 12"

### Round Dampers



- Available in single blade design
- Hand quadrant and motor actuators available
- Call for pricing

HVAC No.	MFG Part No.	Description	Size Range Available
Special Order Item	L12	Round Volume Control Damper	6" through 24"
Special Order Item	L70	Galvanized Control Damper	6" through 24"
Special Order Item	L75	Aluminum Control Damper	6" through 24"
Special Order Item	L80	Stainless Steel Control Damper	6" through 24"

### Backdraft Dampers



- Available in aluminum or galvanized construction
- Call for pricing

HVAC No.	MFG Part No.	Description	Size Range Available
Special Order Item	225B	Aluminum	4" x 4" - 120" x 120"
Special Order Item	D388	Galvanized Steel	4" x 4" - 120" x 120"

### Combination Louvers/Dampers



- Available in aluminum or steel construction
- Various depths in stationary or adjustable design
- Various finishes and actuators available
- Call for pricing

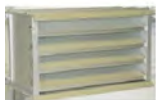
HVAC No.	MFG Part No.	Description	Size Range Available
Special Order Item	AC45C	4" Deep, 35 Degree Blades	12" x 12" - 144" x 144"
Special Order Item	DC65D	6" Deep, 35 Degree Blades	12" x 12" - 144" x 144"
Special Order Item	EL47A	4" Deep, 45 Degree Blades	12" x 12" - 144" x 144"
Special Order Item	EL62A	6" Deep, 45 Degree Blades	12" x 12" - 144" x 144"

VENTILATION

## VENTILATION

### Louvers and Dampers

#### Brick Vents



- Available in numerous sizes and finishes
- Call for pricing

HVAC No.	MFG Part No.	Size
Special Order Item	125	12" x 4.75"
Special Order Item	127	12" x 2.3"
Special Order Item	133	8" x 2.3"
Special Order Item	135	8" x 4.75"
Special Order Item	140	8" x 7.75"

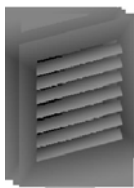
#### Ceiling Radiation Dampers



- Available rectangular or round
- Available insulated
- Various sizes
- 2 hour rated with 165 degree fusible link 212 optional
- Call for pricing

HVAC No.	MFG Part No.	Description	Size Range Available
Special Order Item	L89	Uninsulated 2-Hour Damper	4" x 4" - 18" x 10"
Special Order Item	L91	Uninsulated 2-Hour Damper	4" x 4" - 18" x 10"

#### Gravity Ventilators



- Available 6"x6" up to 60"x72"
- Available in numerous finishes
- Call for pricing

HVAC No.	MFG Part No.	Description	Size Range Available
Special Order Item	AGV1	Aluminum, Low Profile	12" x 12" - 72" x 72"

### Jenco

#### Roof Curbs, 12" High



- Standard curb is "RF" roof over type - Options Include:
- Damper Shelf
- Metal Liner - solid or screen type
- Burglar bars - 1/2" dia. on 6" centers
- Heights: 8, 12, 16, 18, 20, 24" or special heights
- Single pitch or double pitch
- Aluminum construction
- Self flashing curbs

HVAC No.	MFG Part No.	Description	Price
385769	2302.12.15CSF	Fits Jenco Model KSF12	\$382.20
385785	2302.12.18CSF	Fits Jenco Model KSF18	\$389.11
385777	2302.12.24UBB	Fits Jenco Model UBS24	\$240.66
385805	2302.12.30UBB	Fits Jenco Model UBS30	\$301.18
385830	2302.12.36UBB	Fits Jenco Model UBS36	\$349.92
385848	2302.12.42UBB	Fits Jenco Model UBS42	\$395.66
385867	2302.12.48UBB	Fits Jenco Model UBS48	\$422.27
385889	2302.12.54UBB	Fits Jenco Model UBS54	\$442.91
385897	2302.12.60UBB	Fits Jenco Model UBS60	\$549.23

#### Speed Controls

HVAC No.	MFG Part No.	Description	Price
445986	2525.5UL	Variable Speed Rotary Control	\$47.86
385639	2727.1	Speed Control, 115V	\$85.74
385686	2828.1	Speed Control, 115V	\$174.57
385677	3232.1	230V Speed Control	\$163.23

## VENTILATION

### Jenco

#### Gravity Dampers



- Used with roof exhausters for supply or return configurations
- Available in aluminum or galvanized construction

HVAC No.	MFG Part No.	Size	Price
385645	411011	11" Square x 2" Height	\$54.52
385651	411012	12" Square x 2" Height	\$54.45
385652	411014	14" Square x 2" Height	\$72.60
385660	411016	16" Square x 2" Height	\$74.26
385659	411018	18" Square x 2" Height	\$80.85
385661	411020	20" Square x 2" Height	\$89.10
385675	411022	22" Square x 2" Height	\$100.65
385674	411024	24" Square x 2" Height	\$130.35
385701	411028	28" Square x 2" Height	\$150.15
385699	411030	30" Square x 2" Height	\$147.84

#### Rain Hoods



- Used with sidewall exhaust fans
- Galvanized standard, aluminum optional
- Optional birdscreen available

HVAC No.	MFG Part No.	Size	Price
385795	5520.8.24KDS	Fits Jenco LCE24	\$309.08
385813	5520.8.30KDS	Fits Jenco LCE30	\$347.72
385837	5520.8.36KDS	Fits Jenco LCE36	\$404.27
385864	5520.8.42KDS	Fits Jenco LCE42	\$463.62
385894	5520.8.48KDS	Fits Jenco LCE48	\$564.33
385948	5520.8.54KDS	Fits Jenco LCE54	\$811.48
386030	5520.8.60KDS	Fits Jenco LCE60	\$1,113.57

#### Dome Direct Drive Propeller Roof Vents



- Exhaust air up to 3,100 CFM
- Static pressure applications up to 3/4" w.g.
- Low profile attractive spun aluminum exterior
- Direct drive units have low sound levels and quiet operation
- UL 705 Listed

HVAC No.	MFG Part No.	Description	Voltage	Air Flow at Static Pressure	Price
386017	ARE12MH1AS	Intake	115/1/60	1760 CFM @ 1/4-IN S.P.	\$1,145.15
386137	ARE12MH1CS	Intake	208-230/1/60	1760 CFM @ 1/4-IN S.P.	\$1,145.15
386031	ARE12MM1AS	Intake	115/1/60	730 CFM @ 1/4-IN S.P.	\$1,123.19
386058	ARE12MM1CS	Intake	208-230/1/60	730 CFM @ 1/4-IN S.P.	\$1,123.19
386182	ARE16MM1AS	Intake	115/1/60	1400 CFM @ 1/4-IN S.P.	\$1,307.17
386218	ARE16MM1CS	Intake	208-230/1/60	1400 CFM @ 1/4-IN S.P.	\$1,307.17
386211	ARE16PH1AS	Intake	115/1/60	2650 CFM @ 1/4-IN S.P.	\$1,353.85
386212	ARE16PH1CS	Intake	208-230/1/60	2650 CFM @ 1/4-IN S.P.	\$1,353.85
385938	ARS10IH1AS	Exhaust	115/1/60	325 CFM @ 1/4-IN S.P.	\$933.70
386018	ARS12MH1AS	Exhaust	115/1/60	1230 CFM @ 1/4-IN S.P.	\$1,145.15
386138	ARS12MH1CS	Exhaust	208-230/1/60	1230 CFM @ 1/4-IN S.P.	\$1,145.15
386032	ARS12MM1AS	Exhaust	115/1/60	440 CFM @ 1/4-IN S.P.	\$1,123.19
386059	ARS12MM1CS	Exhaust	208-230/1/60	440 CFM @ 1/4-IN S.P.	\$1,123.19
386183	ARS16MM1AS	Exhaust	115/1/60	920 CFM @ 1/4-IN S.P.	\$1,307.17
386219	ARS16MM1CS	Exhaust	208-230/1/60	920 CFM @ 1/4-IN S.P.	\$1,307.17
386213	ARS16PH1AS	Exhaust	115/1/60	2040 CFM @ 1/4-IN S.P.	\$1,353.85
386214	ARS16PH1CS	Exhaust	208-230/1/60	2040 CFM @ 1/4-IN S.P.	\$1,353.85

**VENTILATION**

**Jenco**

**Downblast Roof Belt Drive Centrifugal Exhaust Fans**



- Exhaust air up to 28,000 CFM in high static pressure applications up to 1-1/4" w.g.
- Attractive spun aluminum exterior
- Belt drives permit easy performance adjustments when needed
- Non-overloading backward inclined wheel for efficiency at higher static pressures
- AMCA Air and Sound Licensed
- cULus 705 Listed

HVAC No.	MFG Part No.	Voltage	Air Flow at Static Pressure	Price
385979	DB06MH1S	115/1/60	478 CFM @ 1/4-IN S.P.	\$821.10
385973	DB08MH1S	115/1/60	1095 CFM @ 1/4-IN S.P.	\$822.47
385971	DB08ML1S	115/1/60	604 CFM @ 1/4-IN S.P.	\$822.47
385972	DB08MM1S	115/1/60	839 CFM @ 1/4-IN S.P.	\$822.47
385982	DB09MH1S	115/1/60	1112 CFM @ 1/4-IN S.P.	\$840.32
385989	DB09PH1S	115/1/60	1406 CFM @ 1/4-IN S.P.	\$862.30
386035	DB11MH1S	115/1/60	1430 CFM @ 1/4-IN S.P.	\$994.10
386047	DB11PH1S	115/1/60	1609 CFM @ 1/4-IN S.P.	\$1,014.70
386076	DB12MH1S	115/1/60	1676 CFM @ 1/4-IN S.P.	\$1,065.50
386095	DB12PH1S	115/1/60	1862 CFM @ 1/4-IN S.P.	\$1,080.62
386109	DB12QH1S	115/1/60	2209 CFM @ 1/4-IN S.P.	\$1,103.95
386136	DB12QH3S	115/1/60	2209 CFM @ 1/4-IN S.P.	\$1,154.75
386094	DB14MH1S	115/1/60	1680 CFM @ 1/4-IN S.P.	\$1,040.80
386108	DB14PH1S	115/1/60	2215 CFM @ 1/4-IN S.P.	\$1,065.50
386121	DB14QH1S	115/1/60	2595 CFM @ 1/4-IN S.P.	\$1,094.35
386148	DB14QH3S	115/1/60	2595 CFM @ 1/4-IN S.P.	\$1,149.27
386193	DB14RH1S	115/1/60	3026 CFM @ 1/4-IN S.P.	\$1,211.05
386154	DB14RH3S	115/1/60	3026 CFM @ 1/4-IN S.P.	\$1,158.89
386160	DB16MH1S	115/1/60	2320 CFM @ 1/4-IN S.P.	\$1,165.75
386179	DB16PH1S	115/1/60	2649 CFM @ 1/4-IN S.P.	\$1,191.83
386196	DB16QH1S	115/1/60	3228 CFM @ 1/4-IN S.P.	\$1,219.30
386229	DB16QH3S	115/1/60	3228 CFM @ 1/4-IN S.P.	\$1,272.85
386253	DB16RH1S	115/1/60	3878 CFM @ 1/4-IN S.P.	\$1,371.70
386235	DB16RH3S	115/1/60	3878 CFM @ 1/4-IN S.P.	\$1,281.08
386220	DB18PH1S	115/1/60	2579 CFM @ 1/4-IN S.P.	\$1,252.25
386234	DB18QH1S	115/1/60	3183 CFM @ 1/4-IN S.P.	\$1,281.08
386258	DB18QH3S	115/1/60	3183 CFM @ 1/4-IN S.P.	\$1,336.00
386295	DB18RH1S	115/1/60	3752 CFM @ 1/4-IN S.P.	\$1,388.18
386265	DB18RH3S	115/1/60	3752 CFM @ 1/4-IN S.P.	\$1,346.98
386328	DB18SH1S	115/1/60	4123 CFM @ 1/4-IN S.P.	\$1,461.60
386271	DB18SH3S	115/1/60	4123 CFM @ 1/4-IN S.P.	\$1,355.24
386372	DB18TH1S	115/1/60	4849 CFM @ 1/4-IN S.P.	\$1,579.87
386283	DB18TH3S	115/1/60	4849 CFM @ 1/4-IN S.P.	\$1,373.21
386300	DB18VH3S	115/1/60	5386 CFM @ 1/4-IN S.P.	\$1,396.33
386251	DB20PH1S	115/1/60	3021 CFM @ 1/4-IN S.P.	\$1,327.77
386270	DB20QH1S	115/1/60	3625 CFM @ 1/4-IN S.P.	\$1,382.75
386284	DB20QH3S	115/1/60	3625 CFM @ 1/4-IN S.P.	\$1,373.21
386329	DB20RH1S	115/1/60	4312 CFM @ 1/4-IN S.P.	\$1,462.94
386290	DB20RH3S	115/1/60	4312 CFM @ 1/4-IN S.P.	\$1,382.75
386359	DB20SH1S	115/1/60	4949 CFM @ 1/4-IN S.P.	\$1,536.36
386298	DB20SH3S	115/1/60	4949 CFM @ 1/4-IN S.P.	\$1,392.24
386403	DB20TH1S	115/1/60	5602 CFM @ 1/4-IN S.P.	\$1,654.67
386311	DB20TH3S	115/1/60	5602 CFM @ 1/4-IN S.P.	\$1,423.53
386322	DB20VH3S	115/1/60	6220 CFM @ 1-4-IN S.P.	\$1,446.63
386376	DB24PH1S	115/1/60	3751 CFM @ 1/4-IN S.P.	\$1,800.14
386390	DB24QH1S	115/1/60	4688 CFM @ 1/4-IN S.P.	\$1,849.07
386404	DB24QH3S	115/1/60	4688 CFM @ 1/4-IN S.P.	\$1,775.66
386408	DB24RH3S	115/1/60	5683 CFM @ 1/4-IN S.P.	\$1,815.09
386463	DB24SH1S	115/1/60	6412 CFM @ 1/4-IN S.P.	\$1,953.78
386413	DB24SH3S	115/1/60	6412 CFM @ 1/4-IN S.P.	\$1,796.07

VENTILATION

**VENTILATION**

**Jenco**

**Downblast Roof Belt Drive Centrifugal Exhaust Fans**

HVAC No.	MFG Part No.	Voltage	Air Flow at Static Pressure	Price
386499	DB24TH1S	115/1/60	7613 CFM @ 1/4-IN S.P.	\$2,080.22
386426	DB24TH3S	115/1/60	7613 CFM @ 1/4-IN S.P.	\$1,828.70
386433	DB24VH3S	115/1/60	8467 CFM @ 1/4-IN S.P.	\$1,855.90

**Sidewall Direct Drive Centrifugal Exhaust Fans**



- Exhaust air up to 3,360 CFM in high static pressure applications up to 1" w.g.
- Attractive spun aluminum exterior
- Direct drive units have low sound levels and quiet operation
- Non-overloading backward inclined wheel for efficiency at higher static pressures
- AMCA Air and Sound Licensed
- UL 705 Listed

HVAC No.	MFG Part No.	Motor	Air Flow at Static Pressure	Price
385919	CWD07HH1AS	1/25 HP Motor	179 CFM @ 1/4-IN S.P.	\$818.35
385947	CWD08IH1AS	1/15 HP Motor	390 CFM @ 1/4-IN S.P.	\$856.80
386052	CWD09MH1AS	1/4 HP Motor	1009 CFM @ 1/4-IN S.P.	\$1,150.63
386088	CWD09MH1CS	1/4 HP Motor	1009 CFM @ 1/4-IN S.P.	\$1,180.85
386078	CWD09MM1AS	1/4 HP Motor	564 CFM @ 1/4-IN S.P.	\$1,217.92
386111	CWD09MM1CS	1/4 HP Motor	564 CFM @ 1/4-IN S.P.	\$1,255.00
386063	CWD10PH1AS	1/3 HP Motor	1252 CFM @ 1/4-IN S.P.	\$1,237.15
386100	CWD10PH1CS	1/3 HP Motor	1252 CFM @ 1/4-IN S.P.	\$1,270.10
386217	CWD12MM1AS	1/4 HP Motor	1195 CFM @ 1/4-IN S.P.	\$1,395.05
386243	CWD12MM1CS	1/4 HP Motor	1195 CFM @ 1/4-IN S.P.	\$1,513.26
386383	CWD14QM1AS	1/2 HP Motor	2281 CFM @ 1/4-IN S.P.	\$1,836.85
386405	CWD14QM1CS	1/2 HP Motor	2281 CFM @ 1/4-IN S.P.	\$1,884.44

**Inline/Cabinet Ventilators**



- Exhaust air up to 3600 CFM
- Forward curve centrifugal wheel for high static pressure capabilities to 1" w.g.
- Resilient mount, low RPM motor for quiet operation
- Speed controllable
- AMCA Seal for Air Performance
- cULus Listed

HVAC No.	MFG Part No.	Air Flow at Static Pressure	Price
385814	FFC100	97 CFM @ 1/4-IN S.P.	\$302.19
386102	FFC1500	1152 CFM @ 1/4-IN S.P.	\$1,175.35
385827	FFC150	140 CFM @ 1/4-IN S.P.	\$327.01
386304	FFC2000	1657 CFM @ 1/4-IN S.P.	\$1,490.14
385859	FFC200	190 CFM @ 1/4-IN S.P.	\$415.32
385871	FFC250	241 CFM @ 1/4-IN S.P.	\$420.84
385891	FFC300	285 CFM @ 1/4-IN S.P.	\$426.36
386208	FFC400	360 CFM @ 1/4-IN S.P.	\$725.80
385954	FFC500	496 CFM @ 1/4-IN S.P.	\$784.04
385968	FFC700	656 CFM @ 1/4-IN S.P.	\$830.72
386005	FFC900	853 CFM @ 1/4-IN S.P.	\$969.40

**Sidewall Direct Drive Propeller Fans**



- Sidewall mounting with various accessories
- 10" - 20" sizes
- 300-3,500 CFM up to 3/4" wg static
- Wall housings, wall collars, dampers and guards available

HVAC No.	MFG Part No.	Voltage	Air Flow at Static Pressure	Price
385883	GED12JH1AS	115/1/60	990 CFM @ 1/4-IN S.P.	\$520.19
385908	GED12MH1AS	115/1/60	1228 CFM @ 1/4-IN S.P.	\$572.63
385909	GED14MH1AS	115/1/60	1704 CFM @ 1/4-IN S.P.	\$601.59
385920	GED14QH1AS	115/1/60	2160 CFM @ 1/4-IN S.P.	\$691.28
385911	GED16MM1AS	115/1/60	1734 CFM @ 1/4-IN S.P.	\$654.05

**VENTILATION**

**Jenco**

**Sidewall Direct Drive Propeller Fans**

HVAC No.	MFG Part No.	Voltage	Air Flow at Static Pressure	Price
385964	GED16PH1AS	115/1/60	2287 CFM @ 1/4-IN S.P.	\$768.92
385936	GED18MH1AS	115/1/60	2653 CFM @ 1/4-IN S.P.	\$720.28
385931	GED18MM1AS	115/1/60	2196 CFM @ 1/4-IN S.P.	\$692.69
385958	GED18QH1AS	115/1/60	3352 CFM @ 1/4-IN S.P.	\$807.37
385939	GED20MM1AS	115/1/60	2715 CFM @ 1/4-IN S.P.	\$775.78
385965	GED20QH1AS	115/1/60	3006 CFM @ 1/4-IN S.P.	\$818.35

**Belt Drive Centrifugal Roof Supply Fans**



- Supply air to over 12,000 CFM
- Static pressure capabilities to 2" w.g.
- Heavy-galvanized construction
- Belt drives permit easy performance adjustments when needed
- Forward curved centrifugal blower for efficient air flow at low sound levels
- Filters are washable and reusable
- AMCA Air and Sound Licensed
- cULus 705 Listed

HVAC No.	MFG Part No.	Description	Price
386077	KSF10LMDS	Fan Less Motor and Drive	\$913.10
386165	KSF12LMDS	Fan Less Motor and Drive	\$1,047.65
386289	KSF15LMDS	Fan Less Motor and Drive	\$1,250.87
386510	KSF18LMDS	Fan Less Motor and Drive	\$1,778.39

**Sidewall Heavy Duty Belt Drive Propeller Fans**



- Available from 24" to 60"
- 5,000 to 47,000 CFM
- Up to ¾" wg static
- Wall housings, wall collars, dampers and guards available

HVAC No.	MFG Part No.	Voltage	Air Flow at Static Pressure	Price
386140	L2E30PH1S	115/1/60	6481 CFM @ 1/8-IN S.P.	\$1,069.64
386238	L2E36QH1S	115/1/60	8667 CFM @ 1/8-IN S.P.	\$1,187.72
386293	L2E42PH1S	115/1/60	7206 CFM @ 1/8-IN S.P.	\$1,209.68
386319	L2E48QH1S	115/1/60	10907 CFM @ 1/8-IN S.P.	\$1,248.14

**Sidewall Belt Drive Propeller Exhaust Fans**



- Available from 20" to 60"
- 3,000 to 40,000 CFM
- Up to .625" wg static
- Wall housings, wall collars, dampers and guards available

HVAC No.	MFG Part No.	Voltage	Air Flow at Static Pressure	Price
386019	LCE24MH1S	115/1/60	2269 CFM @ 1/4-IN S.P.	\$1,109.45
386033	LCE30MH1S	115/1/60	5572 CFM @ 1/8-IN S.P.	\$1,163.00
386045	LCE36PH1S	115/1/60	7976 CFM @ 1/8-IN S.P.	\$1,279.70
386117	LCE42PH1S	115/1/60	7976 CFM @ 1/8-IN S.P.	\$1,345.62
386130	LCE48QH1S	115/1/60	12199 CFM @ 1/8-IN S.P.	\$1,385.43
386421	LCE54RH1S	115/1/60	17932 CFM @ 1/8-IN S.P.	\$2,103.34
386466	LCE60SH1S	115/1/60	22275 CFM @ 1/8-IN S.P.	\$2,104.68
385895	LCS20LMDS	115/1/60	5308 CFM @ 1/8-IN S.P.	\$427.75
385951	LCS24LMDS	115/1/60	9361 CFM @ 1/8-IN S.P.	\$625.04
385963	LCS30LMDS	115/1/60	12599CFM @ 1/8-IN S.P.	\$643.00
385967	LCS36LMDS	115/1/60	17907 CFM @ 1/8-IN S.P.	\$662.30
385995	LCS42LMDS	115/1/60	21746 CFM @ 1/8-IN S.P.	\$753.82
386006	LCS48LMDS	115/1/60	25148 CFM @ 1/8-IN S.P.	\$777.17
386422	LCS54RH1S	115/1/60	17932 CFM @ 1/8-IN S.P.	\$2,199.86
386467	LCS60SH1S	115/1/60	22275 CFM @ 1/8-IN S.P.	\$2,285.54



**VENTILATION**

**Jenco**

**Inline Centrifugal Duct Fans**



- Exhaust air up to 942 CFM with static pressure capabilities to 1.5" w.g.
- Galvanized steel casing with black baked enamel coating
- Pre-wired junction box
- Ideal for applications where space is limited
- Non-overloading backward inclined wheel for efficiency at higher static pressures
- AMCA Seal for Air Performance
- cULus Listed

HVAC No.	MFG Part No.	Voltage	RPM	Air Flow at Static Pressure	Price
385850	PV-125	115V	2350 RPM	85 CFM @ 1/4-IN S.P.	\$249.73
385853	PV-150	115V	2750 RPM	177 CFM @ 1/4-IN S.P.	\$266.30
385896	PV-200	115V	3100 RPM	350 CFM @ 1/4-IN S.P.	\$375.31
385921	PV-250	115V	3000 RPM	525 CFM @ 1/4-IN S.P.	\$474.66
385970	PV-315	115V	2600 RPM	570 CFM @ 1/4-IN S.P.	\$636.09

**Gravity Relief Ventilators**



- Exhaust or Supply air up to 10,400 CFM
- Static pressure applications up to .35" w.g.
- All heavy-gauge aluminum construction
- Integral galvanized birdscreen
- Curb mounted or Self-flashing models

HVAC No.	MFG Part No.	Air Flow at Static Pressure	Price
385797	RCXII10S	791 CFM @ 1/4-IN S.P.	\$242.03
385810	RCXII12S	1140 CFM @ 1/4-IN S.P.	\$246.81
410199	RCXII14S	1908CFM @ 1/4-IN S.P.	\$310.97
392503	RCXII16S	2359 CFM @ 1/4-IN S.P.	\$312.40
385872	RCXII18S	2534 CFM @ 1/4-IN S.P.	\$382.20
385881	RCXII20S	2923 CFM @ 1/4-IN S.P.	\$430.50
385987	RCXII24S	4425 CFM @ 1/4-IN S.P.	\$874.65
386010	RCXII26S	4948 CFM @ 1/4-IN S.P.	\$955.67
386155	RCXII30S	6920 CFM @ 1/4-IN S.P.	\$1,022.95

**Downblast Direct Drive Centrifugal Roof Exhaust Fans**



- Exhaust air up to 28,000 CFM
- High static pressure applications up to 1-1/4" w.g.
- Attractive spun aluminum exterior
- Belt drives permit easy performance adjustments when needed
- Non-overloading backward inclined wheel for efficiency at higher static pressures
- AMCA Air and Sound Licensed
- cULus 705 Listed

HVAC No.	MFG Part No.	Horsepower Options	Airflow Range
Special Order Item	SDBD6	1/10 or 1/3 HP	53 - 351 CFM
Special Order Item	SDBD7	1/10 or 1/3 HP	79 - 476 CFM
Special Order Item	SDBD8	1/25, 1/10, or 1/4 HP	187 - 892 CFM
Special Order Item	SDBD10	1/4 or 1/3 HP	398 - 1348 CFM
Special Order Item	SDBD12	1/4, 1/2, or 3/4 HP	479 - 1885 CFM
Special Order Item	SDBD14	1/4, 1/2, 3/4, or 1 HP	858 - 3507 CFM
Special Order Item	SDBD15	1/2, 3/4, or 1-1/2 HP	779 - 4083 CFM
Special Order Item	SDBD16	1/2, 1, or 1-1/2 HP	1317 - 4984 CFM

VENTILATION

**VENTILATION**

**Jenco**

**Square Inline Belt Drive Centrifugal Duct Fans**



- Exhaust air up to 24,000 CFM
- High static pressure applications up to 3-1/2" w.g.
- Belt drives permit easy performance adjustments when needed
- Ideal for applications where space is limited
- Non-overloading backward inclined wheel for efficiency at higher static pressures
- AMCA Air and Sound Licensed
- cULus 705 Listed

HVAC No.	MFG Part No.	Description	Price
386060	SQB08LMDS	Less Motor and Drive	\$892.50
386093	SQB10LMDS	Less Motor and Drive	\$930.95
386174	SQB12LMDS	Less Motor and Drive	\$1,060.02
386260	SQB15LMDS	Less Motor and Drive	\$1,202.82
386331	SQB18LMDS	Less Motor and Drive	\$1,333.25
386444	SQB20LMDS	Less Motor and Drive	\$1,578.53
386529	SQB24LMDS	Less Motor and Drive	\$1,838.19

**Inline Mixed Flow Duct Fans**



- Exhaust air up to 1,050 CFM with static pressure capabilities to 1" w.g.
- Mixed flow impeller for excellent air flow to pressure performance ratio
- Direct connection, two-speed motor
- Ideal for applications where space is limited
- AMCA Seal for Air Performance
- cULus Listed

HVAC No.	MFG Part No.	Description	Price
385720	TD-100	2-Speed, 120V	\$172.47
385781	TD-125	2-Speed, 120V	\$225.77
385832	TD-150	2-Speed, 120V	\$286.67
385877	TD-200	2-Speed, 120V	\$342.20
385962	TD-250	2-Speed, 120V	\$623.68
385997	TD-315	2-Speed, 120V	\$739.58

**Upblast Belt Drive Centrifugal Roof Exhaust Fans**



- Exhaust air up to 3,400 CFM
- High static pressure applications up to 1-1/4" w.g.
- Attractive spun aluminum exterior
- Direct drive units have low sound levels and quiet operation
- Non-overloading backward inclined wheel for efficiency at higher static pressures
- Roof or sidewall mounting options
- AMCA Air and Sound Licensed
- cULus 705 or 762 Listed

HVAC No.	MFG Part No.	Motor	Air Flow at Static Pressure	Price
386142	TXB10RHULMH1S	1/4 HP	1146 CFM @ 1/4-IN S.P.	\$1,259.12
386244	TXB12RHULMH1S	1/4 HP	1353 CFM @ 1/4-IN S.P.	\$1,287.95
386285	TXB15RHULMH1S	1/4 HP	2015 CFM @ 1/4-IN S.P.	\$1,370.33
386371	TXB16RHULQH1S	1/2 HP	3986 CFM @ 1/4-IN S.P.	\$1,577.16
386431	TXB18RHULQH1S	1/4 HP	3058 CFM @ 1/2-IN S.P.	\$1,700.90
386487	TXB20RHULQH1S	1/2 HP	3666 CFM @ 1/4-IN S.P.	\$1,949.68
386595	TXB24RHULPH1S	1/3 HP	3731 CFM @ 1/4-IN S.P.	\$2,534.32
385980	TXD06JH1AS	1/10 HP	328 CFM @ 1/4-IN S.P.	\$829.33
385999	TXD08MH1AS	1/4 HP	1232 CFM @ 1/4-IN S.P.	\$985.87
386084	TXD10RHULMH1AS	1/4 HP	1398 CFM @ 1/4-IN S.P.	\$1,253.62
386187	TXD12RHULMM1AS	1/4 HP	1338 CFM @ 1/4-IN S.P.	\$1,314.03
386124	TXD14RHULMM1AS	1/4 HP	1798 CFM @ 1/4-IN S.P.	\$1,370.33
386272	TXD15RHULQM1AS	1/2 HP	2491 CFM @ 1/4-IN S.P.	\$1,396.33



## VENTILATION

### Jenco

#### Upblast Belt Drive Propeller Roof Exhaust Fans



- Exhaust air up to 51,000 CFM in static pressure applications up to 1/2" w.g.
- Straight-through air flow design results in maximum exhaust efficiency
- Belt drives permit easy performance adjustments when needed
- cULus 705 Listed

HVAC No.	MFG Part No.	Motor	Air Flow at Static Pressure	Price
386479	UBS30SH1S	1 HP	7865 CFM @ 1/4-IN S.P.	\$2,182.19
386559	UBS36SH1S	1 HP	8064 CFM @ 1/4-IN S.P.	\$2,396.04
386654	UBS42TH1S	1-1/2 HP	11400 CFM @ 1/4-IN S.P.	\$2,712.70
386710	UBS48VH1S	2 HP	16506 CFM @ 1/4-IN S.P.	\$3,004.89
386747	UBS54WH3S	3 HP	20962 CFM @ 1/4-IN S.P.	\$4,001.32
386768	UBS60XH3S	5 HP	36545 CFM @ 1/4-IN S.P.	\$4,427.56

#### Energy Recovery Ventilators



- MERV-8 filters
- Non-Fused disconnect
- Transformer/relay package allowing simple on/off control
- Access doors for easy access to blowers, core and filters
- Integral mounting flange and hanging bracket system
- 2 Direct Drive, TEFC, Premium Efficient blower motors in 500/800
- 2 Belt Drive, TEFC Premium Efficient blower motors in the 1600
- Fully insulated case
- Large cores for high efficiency
- No condensate pan or drain required

HVAC No.	MFG Part No.	Motor	Airflow at Static Pressure	Weight	Price
455706	TR130	.1 HP Motor, 115VAC	137 CFM @ .30-IN S.P.	49 lbs	\$1,513.87
455707	TR200	.1 HP Motor, 115VAC	186 CFM @ .30-IN S.P.	70 lbs	\$1,960.62
455708	TR300	.2 HP Motor, 115VAC	295 CFM @ .50-IN S.P.	72 lbs	\$2,231.04
455709	TRC500	.6 HP Motor, 208/230/1	540 CFM @ .50-IN S.P.	141 lbs	\$4,221.00
455710	TRC800	.5 HP Motor, 208/230/1	860 CFM @ .50-IN S.P.	211 lbs	\$6,463.40
455711	TRC1600	1.5 HP Motor, 208/230/1	1600 CFM @ .50-IN S.P.	414 lbs	\$13,059.38

### Broan

#### Wall and Roof Caps, High Capacity



- High-capacity design up to 1200 CFM
- Built-in bird screen
- Steel housing, black
- Electrically bonded
- Epoxy finish

HVAC No.	MFG Part No.	Description	Price
387334	437	High Capacity Roof Cap, Up to 1200 CFM, Black	\$330.54
387335	441	Aluminum Wall Cap with Gravity Damper for 10" Round Duct	\$160.61

#### Attic Ventilators



HVAC No.	MFG Part No.	Description	Price
387304	358	1200 CFM, With Aluminum Dome	\$364.58

VENTILATION

## VENTILATION

### Broan

#### Aluminum Roof / Wall Caps



HVAC No.	MFG Part No.	Description	Size	Price
387359	611	Roof Cap for Flat Roofs	8"	\$142.57
387360	612	Roof Cap for Flat Roofs	12"	\$226.07
387361	613	Wall Cap	12"	\$155.11

#### Controls



- Model 80L Variable Speed Control adjusts blower speed and sound level

HVAC No.	MFG Part No.	Description	Color	Price
387854	61V	15 Minute Time Control, 20/10 Amps	Ivory	\$94.90
387855	61W	15 Minute Time Control, 20/10 Amps	White	\$94.90
387838	57V	Electronic Variable Speed, 3 Amps	Ivory	\$77.78
387839	57W	Electronic Variable Speed, 3 Amps	White	\$77.78
387841	59V	60 Minute Time Control With Continuous On, 20 Amps	Ivory	\$94.90
387842	59W	60 Minute Time Control With Continuous On, 20 Amps	White	\$94.90
387928	72W	Electronic Variable Speed, 6 Amp	White	\$133.56
387999	80L	Variable Speed Control, 3A 120V		\$85.01

#### Wall and Roof Caps



HVAC No.	MFG Part No.	Description	Price
395391	641FA	Wall Cap, Inlet, Fits 6" Round Duct, Steel/Aluminum	\$90.03
387373	641	Wall Cap, Exhaust, Fits 6" Round Duct, Steel/Aluminum	\$91.50
387375	643	Wall Cap, Exhaust, Fits 8" Round Duct, Steel/Aluminum	\$140.81
387376	644	Roof Cap, Exhaust, Fits 3-1/4" x 10" or up to 8" Round Duct, Steel/Aluminum	\$105.23
387378	646	Wall Cap, Exhaust, Fits 6" Round Duct, Plastic Louvered	\$80.28
387379	647	Wall Cap, Exhaust, Fits 7" Round Duct, Aluminum	\$126.19
387380	649	Wall Cap, Exhaust, Fits 3-1/4" x 10" Duct, Aluminum	\$75.16
387370	634	Roof Cap, Exhaust, Fits 3-1/4" x 10" or up to 8" Round Duct, Steel	\$64.26

#### Bathroom Exhaust Fans, Ultra Silent



- Very quiet operation 0.3 to 1.4 sones
- 80 CFM to 150 CFM
- QTXE features 6" ducting for superior performance
- QTXE models are ENERGY STAR qualified
- HVI Certified
- QTXE includes hanger bar system for fast, flexible installation for all types of construction
- Motor engineered for continuous operation
- UL Listed for use over bathtub or shower when connected to a GFCI protected branch circuit
- Fits 2" x 8" ceiling construction
- Radiation damper available

HVAC No.	MFG Part No.	Air Flow/Sound Level	Notes	Price
388973	QTX110HL	110 CFM, 0.9 Sones	With Heater, Light, Night Light	\$594.03
388976	QTXE080	80 CFM, 0.3 Sones		\$318.99
388978	QTXE110	110 CFM, 0.7 Sones		\$280.54
388982	QTXE150	150 CFM, 1.4 Sones		\$346.90

#### Utility/MultiPurpose Exhaust Fans



HVAC No.	MFG Part No.	Air Flow/Sound Level	Grille Size	Notes	Price
387344	502	270 CFM, 8.0 Sones	13-1/2" Square		\$309.58
387345	503	160 CFM, 5.0 Sones	11-1/2" Square		\$224.26
387346	504	350 CFM, 6.5 Sones	13-1/2" Square		\$314.79
387347	505	180 CFM, 5.5 Sones	11-1/2" Square		\$191.08
387348	506	470 CFM, 8.0 Sones	13-1/2" Square		\$309.20
387349	507	250 CFM, 7.0 Sones	11-1/2" Square		\$324.66
387350	508	270 CFM, 6.0 Sones	13-1/2" Square		\$309.20
387351	509	180 CFM, 6.5 Sones	11-1/2" Square		\$224.49

## VENTILATION

### Broan

#### Utility/MultiPurpose Exhaust Fans

HVAC No.	MFG Part No.	Air Flow/Sound Level	Grille Size	Notes	Price
387387	670	50 CFM, 3.5 Sones	9" Square		\$102.27
387388	671	70 CFM, 6.0 Sones	9" Square		\$81.61
387403	750	100 CFM, 3.5 Sones	Round, 15" Diameter	With Light and NightLight	\$340.14
387404	751	100 CFM, 3.5 Sones	Round, 15" Diameter	With Builtin Light	\$278.12
387389	673	60 CFM, 4.5 Sones	Round, 8" Diameter		\$93.32
387391	678	50 CFM, 2.5 Sones	11" x 10-1/2"	With Builtin Light	\$91.35
387671	12C	360 CFM, 8.0 Sones	13-1/2" Square	Through-Wall Mount	\$622.31

#### Recessed Bathroom Exhaust Fans



HVAC No.	MFG Part No.	Air Flow/Sound Level	Notes	Price
387402	744	70 CFM, 1.5 Sones	Recessed with Light	\$225.02

#### Bathroom Exhaust Fans

##### InVent® Series



- FoldAway™ mounting ears allow for easy installation in both new construction and room-side replacement
- New TrueSeal™ damper technology forms a tighter seal to reduce backdrafts
- EzDuct™ Connector allows roomside installation with no attic access required
- Effective ventilation clears humidity and odors
- Attractive grille styling

HVAC No.	MFG Part No.	Air Flow/Sound Level	Notes	Price
450118	AE80BL	80 CFM, 1.5 Sones	With LED Light	\$206.93
450097	AE80B	80 CFM, 1.5 Sones		\$118.15
448898	AE80	80 CFM, 0.8 Sones		\$224.72
450127	A110L	110 CFM, 1.3 Sones	With Light	\$335.56
450106	A50L	50 CFM, 1.5 Sones	With Light	\$146.81
449971	A70L	70 CFM, 2.0 Sones	With Light	\$151.47
450109	A110	110 CFM, 3.0 Sones		\$156.05
450115	A80HD	80 CFM 2.0 Sones	With Heavy Duty Metal Grille	\$181.02
450108	A80	80 CFM 2.0 Sones		\$133.85
450110	AE50	50 CFM, 0.5 Sones		\$156.05

#### High Capacity Bath and Ventilation Fans



##### 100/150 CFM FEATURES

- 6" round metal duct connector
- Single, impact-resistant centrifugal blower wheel housing
- 20 gauge galvanized steel housing
- Duct horizontally, vertically, or in-line with a separate adapter
- Low profile, white polymeric or painted white enamel metal grille
- Models L100L and L150L are UL Listed for use over bathtubs or showers when connected to a GFCI branch circuit
- Model 80L Variable Speed Control adjusts blower speed and sound level

##### 200/250/300 CFM FEATURES

- 8" round metal duct connector
- Single, impact-resistant centrifugal blower wheel (Model L300KMG has a metal wheel)
- 20 gauge galvanized steel housing
- Duct horizontally, vertically, or in-line with a separate adapter
- Models L200L, L250L and L300L are UL Listed for use over bathtubs or showers when connected to a GFCI branch circuit

HVAC No.	MFG Part No.	Horizontal Discharge	Vertical Discharge	Construction	Price
388646	L100	109 CFM, 0.9 Sones	109 CFM, 0.9 Sones		\$269.66
388649	L100L	95 CFM, 0.3 Sones	106 CFM, 0.7 Sones		\$350.34
388650	L100MG	115 CFM, 0.9 Sones	115 CFM, 0.9 Sones	Metal Grille	\$359.84
388651	L150	157 CFM, 1.5 Sones	157 CFM, 1.5 Sones		\$281.34
388652	L1500	1513 CFM, 8.4 Sones	1513 CFM, 8.4 Sones		\$1,035.51

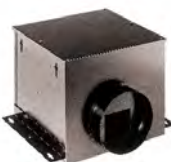
**VENTILATION**

**Broan**

**High Capacity Bath and Ventilation Fans**

HVAC No.	MFG Part No.	Horizontal Discharge	Vertical Discharge	Construction	Price
388655	L1500L	1076 CFM, 3.5 Sones	1214 CFM, 6.7 Sones		\$1,080.95
388658	L150L	147 CFM, 1.1 Sones	147 CFM, 1.1 Sones		\$361.39
388659	L150MG	161 CFM, 1.4 Sones	162 CFM, 1.6 Sones	Metal Grille	\$370.90
388660	L200	210 CFM, 1.7 Sones	210 CFM, 1.7 Sones		\$313.15
388661	L2000L	1898 CFM, 10.1 Sones	1791 CFM, 9.4 Sones		\$1,480.79
388664	L200L	183 CFM, 1.0 Sones	195 CFM, 1.9 Sones		\$396.35
388665	L200MG	215 CFM, 1.9 Sones	209 CFM, 1.8 Sones	Metal Grille	\$405.13
388666	L250	259 CFM, 2.2 Sones	259 CFM, 2.2 Sones		\$334.70
388669	L250L	238 CFM, 1.7 Sones	245 CFM, 2.3 Sones		\$418.22
388670	L250MG	265 CFM, 2.5 Sones	262 CFM, 2.7 Sones	Metal Grille	\$426.97
388671	L300	308 CFM, 2.9 Sones	308 CFM, 2.9 Sones		\$337.70
388674	L300KMG	277 CFM, 3.1 Sones	277 CFM, 3.7 Sones	Metal Grille	\$462.19
388675	L300L	283 CFM, 2.4 Sones	293 CFM, 3.1 Sones		\$426.78
388676	L300MG	316 CFM, 3.0 Sones	314 CFM, 2.8 Sones	Metal Grille	\$435.52
388677	L3500EXL	3696 CFM, 14.2 Sones	3452 CFM, 14.5 Sones		\$2,049.81
388678	L400	434 CFM, 2.3 Sones	434 CFM, 2.3 Sones		\$542.45
388682	L400KL	380 CFM, 2.0 Sones	375 CFM, 3.1 Sones		\$630.55
388683	L400L	391 CFM, 1.2 Sones	406 CFM, 1.6 Sones		\$582.90
388684	L500	514 CFM, 3.3 Sones	514 CFM, 3.3 Sones		\$656.59
388687	L500K	481 CFM, 4.4 Sones	473 CFM, 4.0 Sones		\$670.38
388688	L500KL	459 CFM, 1.8 Sones	472 CFM, 3.8 Sones		\$708.96
388689	L500L	519 CFM, 3.4 Sones	519 CFM, 3.4 Sones		\$663.68
388690	L700	701 CFM, 4.7 Sones	701 CFM, 4.7 Sones		\$733.80
388693	L700L	629 CFM, 2.7 Sones	681 CFM, 3.7 Sones		\$772.32
388694	L900	901 CFM, 4.1 Sones	901 CFM, 4.1 Sones		\$926.84
388697	L900L	858 CFM, 3.4 Sones	884 CFM, 3.8 Sones		\$972.30

**Inline Ventilator, Single Port**



- Inline fans 110 to 200 CFM
- 6" round inlet and outlet

HVAC No.	MFG Part No.	Air Flow	Sound Level	Price
389203	SP100	110 CFM	1.0 Sones	\$380.46
389204	SP140	150 CFM	1.5 Sones	\$477.02
389205	SP200	210 CFM	2.0 Sones	\$422.73

**Bathroom Exhaust Fans**

**Ultra Green™ Series**



- 50, 80 or 110 CFM
- Intermittent and continuous ventilation
- ULTRA Smart™ DC Motor and Control Technology adjusts motor speed to ensure rated air movement
- ENERGY STAR qualified
- ULTRA Quick™ Installation Technology saves time with the fastest, easiest, most universal installation
- XB and ZB models feature 6" ducting-50 and 80 CFM models include an optional 6" to 4" duct reducer
- Bright, energy efficient 36 watt fluorescent lighting
- UL Listed for use over bathtub or shower when connected to a GFCI protected branch circuit Type IC
- Fits 2" x 8" ceiling construction
- Optional RDFU Premium Radiation Damper Kit available

HVAC No.	MFG Part No.	Air Flow	Sound Level	Notes	Price
418393	XB110	110 CFM	0.3 Sones		\$326.38
446560	XB50	50 CFM	0.3 Sones		\$287.28
418201	XB80	80 CFM	0.3 Sones		\$295.95
446561	ZB110	110 CFM	0.3 Sones		\$354.96
450058	ZB80L	80 CFM	<0.3 Sones	With Light	\$458.54

VENTILATION

## VENTILATION

### Broan

#### Bathroom Exhaust Fans

##### Low Profile



- Fits in 2x4 ceiling or wall construction
- 80 CFM with 4" duct ensures ample air movement
- 70 CFM with 3" duct reducer
- >50 CFM at 0.25" static pressure
- meets ASHRAE 62.2 local ventilation requirements (with 4" oval duct or 3" round duct)
- Only 1.0 sones for quiet operation (4" duct)
- 4" oval or 3" round duct connection for installation flexibility
- Ideal for multi-family applications
- Compatible with RDF1 Premium Radiation Damper

HVAC No.	MFG Part No.	Air Flow	Sound Level	Price
440737	LP80	80 CFM		\$160.34

##### Multi-Speed



HVAC No.	MFG Part No.	Air Flow	Sound Level	Price
439918	ZB80	80 CFM	0.3 Sones	\$321.78

### Lloyd Industries

#### Storm Resistant Louvers



- 2" Deep louver with flange frame
- Capable of intake or exhaust
- Blade spacing approximately 2-1/2" center to center
- Blade angle 45 degrees, includes Birdscreen
- Other finishes and construction materials available

HVAC No.	MFG Part No.	Size	Bird Screen	Flange	Depth	Price
128516	2-SRF-6X6	6" x 6"	With Bird Screen	With Flange	2"	\$76.92
128173	2-SRF-8X8	8" x 8"	With Bird Screen	With Flange	2"	\$98.70
327196	2-SRF-10X10	10" x 10"	With Bird Screen	With Flange	2"	\$106.72
377156	4-SRCF-12X12	12" x 12"	With Bird Screen	With Flange	4"	\$174.26
160425	2-SRF-12x18	12" x 18"	With Bird Screen	With Flange	2"	\$117.98
162187	2-SRF-14X14	14" x 14"	With Bird Screen	With Flange	2"	\$201.71
129719	2-SRF-16X16	16" x 16"	With Bird Screen	With Flange	2"	\$200.45
163865	2-SRF-18X18	18" x 18"	With Bird Screen	With Flange	2"	\$200.45
129712	4-SRCF-18X18	18" x 18"	With Bird Screen	With Flange	4"	\$243.29
129722	2-SRF-20X20	20" x 20"	With Bird Screen	With Flange	2"	\$283.96
129762	2-SRF-24X24	24" x 24"	With Bird Screen	With Flange	2"	\$283.96
392678	4-SRF-24X24	24" x 24"	With Bird Screen	With Flange	4"	\$310.97
127823	4-SRCF-36X36	36" x 36"	With Bird Screen	With Flange	4"	\$496.42
127850	4-SRCF-48X48	48" x 48"	With Bird Screen	With Flange	4"	\$741.17

#### Ceiling Radiation Damper with Boot



- 3 hour rated ceiling radiation damper
- 22 gauge blades on CRD
- 165 degree fusible link

HVAC No.	MFG Part No.	Size	Price
373617	50CRD-95-BT-041206	4" x 12" x 6", With 90 Degree Boot	\$69.78
379394	50CRD-95-BT-061206	6" x 12" x 6", With 90 Degree Boot	\$71.30

**VENTILATION**

**Lloyd Industries**

**Ceiling Radiation Damper, Square**



- 3 Hour Rating
- UL Listed Link (165°F Standard)
- Blades 22 gauge galvanized steel
- Ceramic fiber with fiberglass cover

HVAC No.	MFG Part No.	Size	Price
86787	50CRD-6X6	6" x 6"	\$41.94
86788	50CRD-7X7	7" x 7"	\$45.57
86789	50CRD-8X8	8" x 8"	\$45.63
86777	50CRD-10X10	10" x 10"	\$59.37
86779	50CRD-12X12	12" x 12"	\$69.30
86780	50CRD-14X14	14" x 14"	\$82.07
86782	50CRD-16X16	16" x 16"	\$82.07
86783	50CRD-18X18	18" x 18"	\$86.56
86784	50CRD-20X20	20" x 20"	\$105.78
86785	50CRD-22X22	22" x 22"	\$114.28
86786	50CRD-24X24	24" x 24"	\$117.43

**Ceiling Radiation Damper, Round**



- 3 Hour Rating
- UL Listed Link (165°F Standard)
- Blades 22 gauge galvanized steel
- Ceramic fiber with fiberglass cover

HVAC No.	MFG Part No.	Size	Price
166888	55CRD-4	4"	\$45.57
86796	55CRD-5	5"	\$45.57
86797	55CRD-6	6"	\$47.40
86798	55CRD-7	7"	\$49.25
86799	55CRD-8	8"	\$51.07
86800	55CRD-9	9"	\$51.93
86791	55CRD-10	10"	\$52.88
86792	55CRD-12	12"	\$69.30
86793	55CRD-14	14"	\$74.76
86794	55CRD-16	16"	\$83.10
86795	55CRD-18	18"	\$100.34
325807	55CRD-20	20"	\$107.67

**Hinged Access Doors**



- 1" hinged access door
- Double panel door
- 26 gauge galvanized frame

HVAC No.	MFG Part No.	Size	Price
348878	60-HAD-6X6	6" x 6"	\$33.64
86829	60-HAD-8X6	8" x 6"	\$33.64
86804	60-HAD-10X8	10" x 8"	\$37.02
86808	60-HAD-12X6	12" x 6"	\$38.68
86805	60-HAD-12X10	12" x 10"	\$40.26
86809	60-HAD-14X10	14" x 10"	\$43.47
86813	60-HAD-16X10	16" x 10"	\$48.26
86814	60-HAD-16X12	16" x 12"	\$49.92
366436	60-HAD-18X8	18" x 8"	\$54.22

**Round Access Door**



- 1" hinged access door
- Double panel door
- 26 gauge galvanized frame

HVAC No.	MFG Part No.	Size	Price
86835	60-RHAD-10X10	10" x 10"	\$96.96
86841	60-RHAD-6X6	6" x 6"	\$81.33
86842	60-RHAD-7X7	7" x 7"	\$86.88
86843	60-RHAD-8X8	8" x 8"	\$88.35
161906	60-RCAD-10X10	10" x 10"	\$96.96
86834	60-RCAD-6X6	6" x 6"	\$79.97
129471	60-RCAD-8X8	8" x 8"	\$86.84

**Access Doors With Cam Locks**



- 1" thick double cam access door with flange
- Double panel door
- 26 gauge galvanized frame

HVAC No.	MFG Part No.	Size	Price
86856	65-CAD-8X8	8" x 8"	\$30.22
86857	65-CAD-9X9	9" x 9"	\$142.36
86845	65-CAD-10X10	10" x 10"	\$39.84
86847	65-CAD-12X12	12" x 12"	\$37.32
398351	65-CAD-14X6	14" x 6"	\$97.48
321989	65-CAD-14X14	14" x 14"	\$42.71
86850	65-CAD-18X18	18" x 18"	\$62.79
86851	65-CAD-24X12	24" x 12"	\$75.66
86852	65-CAD-24X14	24" x 14"	\$77.24



**VENTILATION**

**Lloyd Industries**

**Access Doors With Cam Locks**

HVAC No.	MFG Part No.	Size	Price
86854	65-CAD-28X28	28" x 28"	\$117.77

**Access Doors For Round Duct, With Cam Lock**



- 1" thick double cam access door with flange
- Double panel door
- 26 gauge galvanized frame

HVAC No.	MFG Part No.	Size	Price
161189	65-RCAD-12X12-12	12" x 12", Fits 12" Round Duct	\$109.03
447298	65-RCAD-12X12-14	12" x 12", Fits 14" Round Duct	\$123.94
161188	65-RCAD-12X12-16	12" x 12", Fits 16" Round Duct	\$109.03
321526	65-RCAD-6X6-6	6" x 6", Fits 6" Round Duct	\$92.40
351295	65-RCAD-8X8-8	8" x 8", Fits 8" Round Duct	\$84.11
160712	65-RCAD-8X8-10	8" x 8", Fits 10" Round Duct	\$86.84
160711	65-RCAD-8X8-12	8" x 8", Fits 12" Round Duct	\$86.84
160710	65-RCAD-8X8-14	8" x 8", Fits 14" Round Duct	\$86.84
160709	65-RCAD-8X8-16	8" x 8", Fits 16" Round Duct	\$86.84

**Fire Dampers, Type A**

**Horizontal Installation**



- For use in horizontal duct
- 1-1/2 Hour fire rating
- 22 gauge interlocking steel blades
- 165 degree fusible link
- 22 gauge steel frame

HVAC No.	MFG Part No.	Size	Price
87104	75A-6X6-H	6" x 6"	\$32.45
165880	75A-6X8-H	6" x 8"	\$34.44
128935	75A-8X4-H	8" x 4"	\$34.44
87113	75A-8X6-H	8" x 6"	\$38.85
87115	75A-8X8-H	8" x 8"	\$39.21
319378	75A-8X10-H	8" x 10"	\$38.54
319377	75A-8X12-H	8" x 12"	\$38.79
319367	75A-8X14-H	8" x 14"	\$44.58
319372	75A-8X18-H	8" x 18"	\$50.40
86870	75A-10X6-H	10" x 6"	\$38.26
86872	75A-10X8-H	10" x 8"	\$38.60
86859	75A-10X10-H	10" x 10"	\$45.89
319376	75A-10X12-H	10" x 12"	\$42.67
86861	75A-10X14-H	10" x 14"	\$46.56
86863	75A-10X16-H	10" x 16"	\$46.56

HVAC No.	MFG Part No.	Size	Price
319366	75A-10X18-H	10" x 18"	\$54.29
319380	75A-10X20-H	10" x 20"	\$54.29
86866	75A-10X24-H	10" x 24"	\$144.23
86888	75A-12X4-H	12" x 4"	\$38.54
86890	75A-12X6-H	12" x 6"	\$38.54
86892	75A-12X8-H	12" x 8"	\$42.69
86874	75A-12X10-H	12" x 10"	\$48.09
86877	75A-12X12-H	12" x 12"	\$44.63
160713	75A-12X14-H	12" x 14"	\$49.29
86881	75A-12X16-H	12" x 16"	\$48.47
86882	75A-12X18-H	12" x 18"	\$63.99
86883	75A-12X20-H	12" x 20"	\$63.99
86884	75A-12X24-H	12" x 24"	\$69.78
348857	75A-12X26-H	12" x 26"	\$67.62
326972	75A-12X36-H	12" x 36"	\$84.99
86907	75A-14X4-H	14" x 4"	\$42.67
86908	75A-14X6-H	14" x 6"	\$42.67
86910	75A-14X8-H	14" x 8"	\$46.73
86894	75A-14X10-H	14" x 10"	\$110.88
86896	75A-14X12-H	14" x 12"	\$48.47
86899	75A-14X14-H	14" x 14"	\$58.17
319370	75A-14X18-H	14" x 18"	\$71.55
86903	75A-14X20-H	14" x 20"	\$69.78
128711	75A-14X25-H	14" x 25"	\$85.32
86926	75A-16X6-H	16" x 6"	\$42.67
86928	75A-16X8-H	16" x 8"	\$50.30
86912	75A-16X10-H	16" x 10"	\$46.56
86914	75A-16X12-H	16" x 12"	\$48.47
86916	75A-16X14-H	16" x 14"	\$58.17
86918	75A-16X16-H	16" x 16"	\$62.01
86920	75A-16X18-H	16" x 18"	\$69.78
326971	75A-16X20-H	16" x 20"	\$69.51
129071	75A-16X22-H	16" x 22"	\$75.60
86921	75A-16X24-H	16" x 24"	\$75.60
326973	75A-18X4-H	18" x 4"	\$46.31
86943	75A-18X6-H	18" x 6"	\$46.56
86945	75A-18X8-H	18" x 8"	\$56.85
86930	75A-18X10-H	18" x 10"	\$54.29
86932	75A-18X12-H	18" x 12"	\$62.06
86934	75A-18X14-H	18" x 14"	\$67.87
86936	75A-18X16-H	18" x 16"	\$67.87
86938	75A-18X18-H	18" x 18"	\$75.60
319359	75A-18X22-H	18" x 22"	\$85.32
86940	75A-18X24-H	18" x 24"	\$85.32
165881	75A-20X6-H	20" x 6"	\$46.56
86965	75A-20X8-H	20" x 8"	\$51.66
160192	75A-20X9-H	20" x 9"	\$54.29
86947	75A-20X10-H	20" x 10"	\$61.22
86949	75A-20X12-H	20" x 12"	\$63.57
86951	75A-20X14-H	20" x 14"	\$67.87
86953	75A-20X16-H	20" x 16"	\$67.62
86955	75A-20X18-H	20" x 18"	\$75.60
86957	75A-20X20-H	20" x 20"	\$75.60
86959	75A-20X22-H	20" x 22"	\$85.32
418688	75A-20X24-H	20" x 24"	\$93.51
86981	75A-22X6-H	22" x 6"	\$52.35
86983	75A-22X8-H	22" x 8"	\$58.17
86969	75A-22X10-H	22" x 10"	\$63.57
86971	75A-22X12-H	22" x 12"	\$67.87
86973	75A-22X14-H	22" x 14"	\$75.50
128284	75A-22X16-H	22" x 16"	\$73.67

VENTILATION

**VENTILATION**

**Lloyd Industries**

**Fire Dampers, Type A**

Horizontal Installation

HVAC No.	MFG Part No.	Size	Price
163791	75A-22X18-H	22" x 18"	\$85.32
86976	75A-22X20-H	22" x 20"	\$85.32
86978	75A-22X22-H	22" x 22"	\$93.07
128712	75A-24X6-H	24" x 6"	\$58.17
86998	75A-24X8-H	24" x 8"	\$65.56
86986	75A-24X10-H	24" x 10"	\$63.57
86988	75A-24X12-H	24" x 12"	\$78.02
86990	75A-24X14-H	24" x 14"	\$61.07
86992	75A-24X16-H	24" x 16"	\$73.67
128143	75A-24X18-H	24" x 18"	\$85.32
86993	75A-24X20-H	24" x 20"	\$85.32
129654	75A-24X22-H	24" x 22"	\$93.07
86995	75A-24X24-H	24" x 24"	\$94.65
87011	75A-26X8-H	26" x 8"	\$62.06
87000	75A-26X10-H	26" x 10"	\$67.87
87002	75A-26X12-H	26" x 12"	\$71.72
160714	75A-26X14-H	26" x 14"	\$81.44
129297	75A-26X16-H	26" x 16"	\$81.44
160694	75A-26X18-H	26" x 18"	\$93.07
87006	75A-26X20-H	26" x 20"	\$93.07
87008	75A-26X22-H	26" x 22"	\$104.69
136681	75A-26X24-H	26" x 24"	\$104.69
136196	75A-26X26-H	26" x 26"	\$114.39
87013	75A-28X10-H	28" x 10"	\$67.87
87015	75A-28X12-H	28" x 12"	\$71.72
129296	75A-28X16-H	28" x 16"	\$81.44
128555	75A-28X20-H	28" x 20"	\$93.07
87020	75A-28X22-H	28" x 22"	\$104.69
87022	75A-28X23-H	28" x 23"	\$104.69
87039	75A-30X8-H	30" x 8"	\$69.78
129461	75A-30X10-H	30" x 10"	\$71.72
87027	75A-30X12-H	30" x 12"	\$75.60
87029	75A-30X14-H	30" x 14"	\$86.90
129206	75A-30X16-H	30" x 16"	\$87.26
87032	75A-30X18-H	30" x 18"	\$102.75
322363	75A-30X20-H	30" x 20"	\$102.75
87036	75A-30X24-H	30" x 24"	\$114.32
87038	75A-30X30-H	30" x 30"	\$143.41
87060	75A-36X36-H	36" x 36"	\$164.56

Vertical Installation



- For use in vertical duct
- 1-1/2 Hour fire rating
- 22 gauge interlocking steel blades
- 165 degree fusible link
- 22 gauge steel frame

HVAC No.	MFG Part No.	Size	Price
87103	75A-6X4-V	6" x 4"	\$24.99
87105	75A-6X6-V	6" x 6"	\$24.99
319361	75A-6X8-V	6" x 8"	\$28.73
87112	75A-8X5-V	8" x 5"	\$28.73
87114	75A-8X6-V	8" x 6"	\$26.52
87116	75A-8X8-V	8" x 8"	\$34.27
87109	75A-8X10-V	8" x 10"	\$32.09
160026	75A-8X12-V-S-12	8" x 12"	\$63.53
87110	75A-8X12-V	8" x 12"	\$33.77
129176	75A-8X14-V	8" x 14"	\$38.85
160273	75A-8X16-V	8" x 16"	\$38.85
319357	75A-8X18-V	8" x 18"	\$42.00
319353	75A-8X24-V	8" x 24"	\$48.47
349923	75A-8X31-V	8" x 31"	\$77.74
86871	75A-10X6-V	10" x 6"	\$30.39
86873	75A-10X8-V	10" x 8"	\$36.18
86860	75A-10X10-V	10" x 10"	\$37.21
129177	75A-10X12-V	10" x 12"	\$37.13
86862	75A-10X14-V	10" x 14"	\$38.79
360845	75A-10X16-V	10" x 16"	\$48.78
86864	75A-10X18-V	10" x 18"	\$45.26
86865	75A-10X20-V	10" x 20"	\$45.26
86889	75A-12X4-V	12" x 4"	\$28.41
86891	75A-12X6-V	12" x 6"	\$32.09
86893	75A-12X8-V	12" x 8"	\$38.89
86875	75A-12X10-V	12" x 10"	\$40.07
86878	75A-12X12-V	12" x 12"	\$40.74
86880	75A-12X14-V	12" x 14"	\$40.38
422313	75A-12X16-V	12" x 16"	\$42.36
319371	75A-12X18-V	12" x 18"	\$53.34
128546	75A-12X20-V	12" x 20"	\$53.34
160350	75A-12X24-V	12" x 24"	\$56.55
86885	75A-12X26-V	12" x 26"	\$61.43
86886	75A-12X30-V	12" x 30"	\$67.87
86887	75A-12X36-V	12" x 36"	\$71.13
129361	75A-14X4-V	14" x 4"	\$33.77
86909	75A-14X6-V	14" x 6"	\$37.13
129171	75A-14X7-V	14" x 7"	\$38.85
86911	75A-14X8-V	14" x 8"	\$39.94
86895	75A-14X10-V	14" x 10"	\$40.68
86897	75A-14X12-V	14" x 12"	\$45.53
86900	75A-14X14-V	14" x 14"	\$48.47
86901	75A-14X16-V	14" x 16"	\$48.47
86902	75A-14X18-V	14" x 18"	\$58.17
86904	75A-14X20-V	14" x 20"	\$58.17
86905	75A-14X24-V	14" x 24"	\$63.04
86906	75A-14X30-V	14" x 30"	\$74.30

**VENTILATION**

**Lloyd Industries**

**Fire Dampers, Type A**

Vertical Installation

HVAC No.	MFG Part No.	Size	Price
86927	75A-16X6-V	16" x 6"	\$37.13
86929	75A-16X8-V	16" x 8"	\$38.96
86913	75A-16X10-V	16" x 10"	\$38.79
86915	75A-16X12-V	16" x 12"	\$40.38
86917	75A-16X14-V	16" x 14"	\$54.64
321600	75A-16X16-H-ETL	16" x 14"	\$146.83
86919	75A-16X16-V	16" x 16"	\$48.47
128742	75A-16X20-V	16" x 20"	\$84.84
86922	75A-16X24-V	16" x 24"	\$63.04
129362	75A-18X4-V	18" x 4"	\$35.91
86944	75A-18X6-V	18" x 6"	\$35.91
86946	75A-18X8-V	18" x 8"	\$44.04
86931	75A-18X10-V	18" x 10"	\$47.42
86933	75A-18X12-V	18" x 12"	\$51.70
86935	75A-18X14-V	18" x 14"	\$56.55
86937	75A-18X16-V	18" x 16"	\$63.04
321599	75A-18X18-H-ETL	18" x 18"	\$163.84
86939	75A-18X18-V	18" x 18"	\$63.04
160063	75A-18X22-V	18" x 22"	\$74.30
86964	75A-20X6-V	20" x 6"	\$35.91
86966	75A-20X8-V	20" x 8"	\$42.00
323661	75A-20X9-V	20" x 9"	\$45.26
86948	75A-20X10-V	20" x 10"	\$45.26
86950	75A-20X12-V	20" x 12"	\$52.98
86952	75A-20X14-V	20" x 14"	\$56.55
86954	75A-20X16-V	20" x 16"	\$56.55
86958	75A-20X20-V	20" x 20"	\$63.04
321517	75A-21X12-V	21" x 12"	\$56.55
86982	75A-22X6-V	22" x 6"	\$43.62
86984	75A-22X8-V	22" x 8"	\$45.72
86970	75A-22X10-V	22" x 10"	\$51.70
86972	75A-22X12-V	22" x 12"	\$56.55
86974	75A-22X14-V	22" x 14"	\$61.43
86975	75A-22X16-V	22" x 16"	\$73.67
319360	75A-22X18-V	22" x 18"	\$85.32
86977	75A-22X20-V	22" x 20"	\$71.13
86979	75A-22X22-V	22" x 22"	\$77.53
86980	75A-22X24-V	22" x 24"	\$77.53
86997	75A-24X6-V	24" x 6"	\$38.64
86999	75A-24X8-V	24" x 8"	\$48.47
86987	75A-24X10-V	24" x 10"	\$56.66
86989	75A-24X12-V	24" x 12"	\$61.99
86991	75A-24X14-V	24" x 14"	\$61.43
319362	75A-24X16-V	24" x 16"	\$61.43
127820	75A-24X18-V	24" x 18"	\$71.13
86994	75A-24X20-V	24" x 20"	\$71.13
86996	75A-24X24-V	24" x 24"	\$77.24
128898	75A-24X28-V	24" x 28"	\$95.34
160564	75A-24X30-V	24" x 30"	\$95.34
160473	75A-24X36-V	24" x 36"	\$116.55
319364	75A-26X6-V	26" x 6"	\$48.47
87012	75A-26X8-V	26" x 8"	\$45.78
87001	75A-26X10-V	26" x 10"	\$56.55
87003	75A-26X12-V	26" x 12"	\$62.69

HVAC No.	MFG Part No.	Size	Price
129396	75A-26X14-V	26" x 14"	\$76.50
87004	75A-26X16-V	26" x 16"	\$71.15
87005	75A-26X18-V	26" x 18"	\$77.53
87007	75A-26X20-V	26" x 20"	\$77.53
87009	75A-26X22-V	26" x 22"	\$87.26
87010	75A-26X24-V	26" x 24"	\$87.26
87025	75A-28X8-V	28" x 8"	\$51.70
87014	75A-28X10-V	28" x 10"	\$56.55
87016	75A-28X12-V	28" x 12"	\$59.79
87017	75A-28X16-V	28" x 16"	\$67.87
87018	75A-28X18-V	28" x 18"	\$68.67
87019	75A-28X20-V	28" x 20"	\$77.53
87021	75A-28X22-V	28" x 22"	\$87.26
87023	75A-28X26-V	28" x 26"	\$95.34
87024	75A-28X28-V	28" x 28"	\$95.34
87040	75A-30X8-V	30" x 8"	\$58.17
87026	75A-30X10-V	30" x 10"	\$59.79
87028	75A-30X12-V	30" x 12"	\$63.04
87030	75A-30X14-V	30" x 14"	\$72.72
87031	75A-30X16-V	30" x 16"	\$72.72
87033	75A-30X18-V	30" x 18"	\$85.62
87034	75A-30X20-V	30" x 20"	\$85.62
87037	75A-30X24-V	30" x 24"	\$95.34
87061	75A-36X36-V	36" x 36"	\$137.13

**Fire Dampers type B**

Horizontal Installation



- For use in horizontal duct
- 1-1/2 Hour fire rating
- 22 gauge interlocking steel blades
- 165 degree fusible link
- 22 gauge steel frame

HVAC No.	MFG Part No.	Size	Price
87355	75B-4X6-H	4" x 6"	\$38.79
87361	75B-6X4-H	6" x 4"	\$38.79
87363	75B-6X6-H	6" x 6"	\$40.82
87365	75B-6X8-H	6" x 8"	\$41.20
164041	75B-6X10-H	6" x 10"	\$43.62
348916	75B-6X24-H	6" x 24"	\$65.16
349087	75B-8X4-H	8" x 4"	\$41.06
87377	75B-8X6-H	8" x 6"	\$41.22
87379	75B-8X8-H	8" x 8"	\$43.62
87371	75B-8X10-H	8" x 10"	\$46.10
321530	75B-8X20-H	8" x 20"	\$63.04
166925	75B-8X36-H	8" x 36"	\$96.96
87141	75B-10X4-H	10" x 4"	\$43.47
87143	75B-10X6-H	10" x 6"	\$43.62
87145	75B-10X8-H	10" x 8"	\$52.67
87124	75B-10X10-H	10" x 10"	\$50.88
87126	75B-10X12-H	10" x 12"	\$53.34
87128	75B-10X14-H	10" x 14"	\$58.17
321515	75B-10X16-H	10" x 16"	\$58.17
87132	75B-10X18-H	10" x 18"	\$67.87
87135	75B-10X22-H	10" x 22"	\$77.53

VENTILATION

**VENTILATION**

**Lloyd Industries**

**Fire Dampers type B**

Horizontal Installation

HVAC No.	MFG Part No.	Size	Price
87136	75B-10X24-H	10" x 24"	\$77.53
87138	75B-10X30-H	10" x 30"	\$89.67
87157	75B-12X4-H	12" x 4"	\$45.84
87160	75B-12X6-H	12" x 6"	\$46.05
87163	75B-12X8-H	12" x 8"	\$50.93
87148	75B-12X10-H	12" x 10"	\$56.85
87150	75B-12X12-H	12" x 12"	\$55.76
87152	75B-12X14-H	12" x 14"	\$60.59
87154	75B-12X16-H	12" x 16"	\$60.59
129392	75B-12X18-H	12" x 18"	\$86.31
164161	75B-12X24-H	12" x 24"	\$87.26
87180	75B-14X4-H	14" x 4"	\$53.34
87183	75B-14X6-H	14" x 6"	\$53.34
87185	75B-14X8-H	14" x 8"	\$55.76
87169	75B-14X10-H	14" x 10"	\$58.17
87172	75B-14X12-H	14" x 12"	\$60.59
87174	75B-14X14-H	14" x 14"	\$72.72
87176	75B-14X16-H	14" x 16"	\$72.72
129758	75B-14X20-H	14" x 20"	\$94.46
164160	75B-14X24-H	14" x 24"	\$94.56
162038	75B-14X26-H	14" x 26"	\$101.79
166926	75B-14X28-H	14" x 28"	\$101.79
161289	75B-14X32-H	14" x 32"	\$111.51
392808	75B-16X4-H	16" x 4"	\$54.64
87202	75B-16X6-H	16" x 6"	\$53.34
87206	75B-16X8-H	16" x 8"	\$55.76
87189	75B-16X10-H	16" x 10"	\$58.17
87194	75B-16X12-H	16" x 12"	\$63.53
87196	75B-16X14-H	16" x 14"	\$72.72
87198	75B-16X16-H	16" x 16"	\$76.23
128740	75B-18X6-H	18" x 6"	\$58.17
87228	75B-18X8-H	18" x 8"	\$63.04
87212	75B-18X10-H	18" x 10"	\$67.87
87216	75B-18X12-H	18" x 12"	\$77.53
165874	75B-18X14-H	18" x 14"	\$84.80
128322	75B-18X16-H	18" x 16"	\$84.84
87222	75B-18X18-H	18" x 18"	\$94.46
87224	75B-18X20-H	18" x 20"	\$94.56
129370	75B-18X22-H	18" x 22"	\$85.32
87253	75B-20X6-H	20" x 6"	\$58.17
87255	75B-20X8-H	20" x 8"	\$63.04
87234	75B-20X10-H	20" x 10"	\$67.87
87238	75B-20X12-H	20" x 12"	\$77.53
87241	75B-20X14-H	20" x 14"	\$84.84
87243	75B-20X16-H	20" x 16"	\$84.84
87245	75B-20X18-H	20" x 18"	\$94.56
87247	75B-20X20-H	20" x 20"	\$94.54
129332	75B-20X26-H	20" x 26"	\$93.07
351463	75B-22X8-H	22" x 8"	\$72.41
87258	75B-22X10-H	22" x 10"	\$77.53
87261	75B-22X12-H	22" x 12"	\$84.80
87262	75B-22X14-H	22" x 14"	\$92.09
87264	75B-22X16-H	22" x 16"	\$92.09
87265	75B-22X18-H	22" x 18"	\$106.64

HVAC No.	MFG Part No.	Size	Price
351753	75B-22X20-H	22" x 20"	\$106.64
87268	75B-22X22-H	22" x 22"	\$116.34
162033	75B-22X24-H	22" x 24"	\$116.34
348874	75B-24X6-H	24" x 6"	\$65.16
87286	75B-24X8-H	24" x 8"	\$72.72
87271	75B-24X10-H	24" x 10"	\$77.53
366536	75B-24X11-H	24" x 11"	\$88.94
87273	75B-24X12-H	24" x 12"	\$84.84
87275	75B-24X14-H	24" x 14"	\$92.09
161273	75B-24X16-H	24" x 16"	\$92.09
127897	75B-24X18-H	24" x 18"	\$106.64
87280	75B-24X20-H	24" x 20"	\$106.64
323869	75B-24X22-H	24" x 22"	\$116.34
87281	75B-24X24-H	24" x 24"	\$116.34
87283	75B-24X26-H	24" x 26"	\$127.68
450699	75B-26X8-H	26" x 8"	\$85.01
87292	75B-26X10-H	26" x 10"	\$84.80
87296	75B-26X16-H	26" x 16"	\$101.79
160262	75B-26X24-H	26" x 24"	\$127.68
87309	75B-28X8-H	28" x 8"	\$85.01
87301	75B-28X10-H	28" x 10"	\$84.84
357030	75B-28X12-H	28" x 12"	\$98.70
87303	75B-28X14-H	28" x 14"	\$98.87
323220	75B-28X20-H	28" x 20"	\$116.34
87307	75B-28X28-H	28" x 28"	\$123.54
87320	75B-30X8-H	30" x 8"	\$87.26
327326	75B-30X14-H	30" x 14"	\$116.63
87315	75B-30X16-H	30" x 16"	\$109.05
322075	75B-30X18-H	30" x 18"	\$125.35
145034	75B-30X20-H	30" x 20"	\$139.57
127898	75B-30X22-H	30" x 22"	\$139.57
87319	75B-30X30-H	30" x 30"	\$174.97
161902	75B-30X40-H	30" x 40"	\$194.12
162049	75B-30X42-H	30" x 42"	\$211.26
87321	75B-32X10-H	32" x 10"	\$89.71
87323	75B-32X12-H	32" x 12"	\$94.56
87325	75B-32X14-H	32" x 14"	\$109.05
321513	75B-32X18-H	32" x 18"	\$125.31
87328	75B-32X20-H	32" x 20"	\$125.31
321511	75B-32X22-H	32" x 22"	\$139.46
87330	75B-32X24-H	32" x 24"	\$139.48
127816	75B-34X8-H	34" x 8"	\$96.96
163925	75B-34X18-H	34" x 18"	\$137.13
322008	75B-34X24-H	34" x 24"	\$151.35
127815	75B-36X6-H	36" x 6"	\$87.26
87337	75B-36X10-H	36" x 10"	\$101.79
351687	75B-36X12-H	36" x 12"	\$106.22
87338	75B-36X14-H	36" x 14"	\$113.02
321510	75B-36X20-H	36" x 20"	\$137.13
321516	75B-36X22-H	36" x 22"	\$151.35
322079	75B-36X24-H	36" x 24"	\$151.35
321814	75B-36X36-H	36" x 36"	\$201.05
87342	75B-38X14-H	38" x 14"	\$119.45
349084	75B-38X16-H	38" x 16"	\$122.45
322007	75B-38X24-H	38" x 24"	\$122.93
144756	75B-40X12-H	40" x 12"	\$115.90
350039	75B-40X16-H	40" x 16"	\$122.45
350038	75B-40X22-H	40" x 22"	\$160.15
322006	75B-40X24-H	40" x 24"	\$160.76
87346	75B-42X12-H	42" x 12"	\$115.90
322076	75B-42X14-H	42" x 14"	\$134.82

VENTILATION

**VENTILATION**

**Lloyd Industries**

**Fire Dampers type B**

Horizontal Installation

HVAC No.	MFG Part No.	Size	Price
352762	75B-42X24-H	42" x 24"	\$181.36
127814	75B-44X8-H	44" x 8"	\$109.05
128739	75B-44X12-H	44" x 12"	\$115.90
160670	75B-44X14-H	44" x 14"	\$134.82
321514	75B-44X18-H	44" x 18"	\$158.40
322005	75B-44X24-H	44" x 24"	\$182.11
349086	75B-46X14-H	46" x 14"	\$141.29
87351	75B-48X12-H	48" x 12"	\$125.35
350037	75B-48X14-H	48" x 14"	\$141.29

Vertical Installation



- For use in vertical duct
- 1-1/2 Hour fire rating
- 22 gauge interlocking steel blades
- 165 degree fusible link
- 22 gauge steel frame

HVAC No.	MFG Part No.	Size	Price
87354	75B-4X4-V	4" x 4"	\$31.12
371675	75B-4X6-V	4" x 6"	\$35.13
87362	75B-6X4-V	6" x 4"	\$35.13
87364	75B-6X6-V	6" x 6"	\$35.13
87366	75B-6X8-V	6" x 8"	\$37.32
322000	75B-6X10-V	6" x 10"	\$39.52
87376	75B-8X4-V	8" x 4"	\$37.34
87378	75B-8X6-V	8" x 6"	\$37.34
128394	75B-8X7-V	8" x 7"	\$39.52
87380	75B-8X8-V	8" x 8"	\$37.28
87372	75B-8X10-V	8" x 10"	\$39.75
87373	75B-8X12-V	8" x 12"	\$42.00
87375	75B-8X14-V	8" x 14"	\$45.53
87142	75B-10X4-V	10" x 4"	\$37.28
87144	75B-10X6-V	10" x 6"	\$42.63
87146	75B-10X8-V	10" x 8"	\$39.33
87125	75B-10X10-V	10" x 10"	\$44.14
87127	75B-10X12-V	10" x 12"	\$46.20
87129	75B-10X14-V	10" x 14"	\$50.40
87130	75B-10X16-V	10" x 16"	\$50.40
87133	75B-10X18-V	10" x 18"	\$58.84
87134	75B-10X20-V	10" x 20"	\$58.84
87137	75B-10X24-V	10" x 24"	\$67.24
87139	75B-10X30-V	10" x 30"	\$77.74
87140	75B-10X32-V	10" x 32"	\$77.74
352777	75B-10X36-V	10" x 36"	\$87.82
87158	75B-12X4-V	12" x 4"	\$39.94
87161	75B-12X6-V	12" x 6"	\$43.74
87164	75B-12X8-V	12" x 8"	\$41.62
87149	75B-12X10-V	12" x 10"	\$43.62
87151	75B-12X12-V	12" x 12"	\$45.53

HVAC No.	MFG Part No.	Size	Price
87153	75B-12X14-V	12" x 14"	\$52.50
87155	75B-12X16-V	12" x 16"	\$52.50
87156	75B-12X18-V	12" x 18"	\$65.35
162040	75B-12X20-V	12" x 20"	\$67.24
162037	75B-12X22-V	12" x 22"	\$73.54
87181	75B-14X4-V	14" x 4"	\$43.43
87184	75B-14X6-V	14" x 6"	\$43.58
87186	75B-14X8-V	14" x 8"	\$52.96
87170	75B-14X10-V	14" x 10"	\$50.40
87173	75B-14X12-V	14" x 12"	\$52.50
87175	75B-14X14-V	14" x 14"	\$63.04
87177	75B-14X16-V	14" x 16"	\$63.04
87178	75B-14X18-V	14" x 18"	\$63.04
87179	75B-14X30-V	14" x 30"	\$96.64
87201	75B-16X4-V	16" x 4"	\$46.20
87203	75B-16X6-V	16" x 6"	\$46.20
87207	75B-16X8-V	16" x 8"	\$45.53
87190	75B-16X10-V	16" x 10"	\$50.40
87195	75B-16X12-V	16" x 12"	\$52.50
87197	75B-16X14-V	16" x 14"	\$63.04
87199	75B-16X16-V	16" x 16"	\$63.04
321518	75B-16X18-V	16" x 18"	\$75.60
349050	75B-16X24-V	16" x 24"	\$75.18
87227	75B-18X6-V	18" x 6"	\$50.40
87229	75B-18X8-V	18" x 8"	\$59.89
87213	75B-18X10-V	18" x 10"	\$58.55
87217	75B-18X12-V	18" x 12"	\$73.67
323125	75B-18X14-V	18" x 14"	\$73.23
87220	75B-18X16-V	18" x 16"	\$73.54
87223	75B-18X18-V	18" x 18"	\$89.78
87252	75B-20X4-V	20" x 4"	\$50.40
87254	75B-20X6-V	20" x 6"	\$41.79
87256	75B-20X8-V	20" x 8"	\$54.64
87235	75B-20X10-V	20" x 10"	\$58.84
87239	75B-20X12-V	20" x 12"	\$73.67
87242	75B-20X14-V	20" x 14"	\$73.50
87244	75B-20X16-V	20" x 16"	\$73.50
87246	75B-20X18-V	20" x 18"	\$81.94
87248	75B-20X20-V	20" x 20"	\$81.94
87249	75B-20X22-V	20" x 22"	\$92.40
87250	75B-20X24-V	20" x 24"	\$72.60
87251	75B-20X28-V	20" x 28"	\$96.64
351370	75B-22X8-V	22" x 8"	\$62.75
87260	75B-22X10-V	22" x 10"	\$67.24
128390	75B-22X12-V	22" x 12"	\$73.54
87263	75B-22X14-V	22" x 14"	\$75.33
351439	75B-22X16-V	22" x 16"	\$73.67
87266	75B-22X18-V	22" x 18"	\$92.40
87267	75B-22X20-V	22" x 20"	\$101.28
87269	75B-22X26-V	22" x 26"	\$113.44
87284	75B-24X4-V	24" x 4"	\$53.49
87285	75B-24X6-V	24" x 6"	\$56.70
87287	75B-24X8-V	24" x 8"	\$63.04
87272	75B-24X10-V	24" x 10"	\$73.67
87274	75B-24X12-V	24" x 12"	\$73.50
323121	75B-24X14-V	24" x 14"	\$79.80
87277	75B-24X16-V	24" x 16"	\$79.80
323183	75B-24X18-V	24" x 18"	\$92.40
323123	75B-24X22-V	24" x 22"	\$100.84
87282	75B-24X24-V	24" x 24"	\$100.84
352532	75B-26X6-V	26" x 6"	\$72.41

VENTILATION

**VENTILATION**

**Lloyd Industries**

**Fire Dampers type B**

Vertical Installation

HVAC No.	MFG Part No.	Size	Price
87298	75B-26X8-V	26" x 8"	\$67.24
162041	75B-26X10-V	26" x 10"	\$84.80
322235	75B-26X12-V	26" x 12"	\$77.74
87295	75B-26X14-V	26" x 14"	\$87.89
162013	75B-26X18-V	26" x 18"	\$100.84
353703	75B-26X20-V	26" x 20"	\$113.44
323194	75B-26X24-V	26" x 24"	\$113.44
87297	75B-26X32-V	26" x 32"	\$119.78
87310	75B-28X8-V	28" x 8"	\$73.67
87302	75B-28X10-V	28" x 10"	\$73.54
87304	75B-28X14-V	28" x 14"	\$88.20
87306	75B-28X20-V	28" x 20"	\$110.50
87308	75B-28X28-V	28" x 28"	\$120.92
87312	75B-30X10-V	30" x 10"	\$178.48
87313	75B-30X12-V	30" x 12"	\$81.90
87314	75B-30X14-V	30" x 14"	\$96.22
87316	75B-30X16-V	30" x 16"	\$96.22
323122	75B-30X18-V	30" x 18"	\$111.34
87317	75B-30X25-V	30" x 25"	\$135.26
87318	75B-30X26-V	30" x 26"	\$135.26
321260	75B-30X30-V	30" x 30"	\$151.64
87333	75B-32X8-V	32" x 8"	\$71.30
87322	75B-32X10-V	32" x 10"	\$73.25
377728	75B-32X12-V	32" x 12"	\$92.34
87324	75B-32X13-V	32" x 13"	\$94.56
323867	75B-32X14-V	32" x 14"	\$94.46
87326	75B-32X16-V	32" x 16"	\$89.21
162012	75B-32X18-V	32" x 18"	\$111.30
87329	75B-32X20-V	32" x 20"	\$105.00
87332	75B-32X32-V	32" x 32"	\$151.64
87334	75B-34X12-V	34" x 12"	\$90.34
327080	75B-34X16-V	34" x 16"	\$100.44
130293	75B-34X18-V	34" x 18"	\$118.84
87335	75B-34X20-V	34" x 20"	\$118.84
160698	75B-36X12-V	36" x 12"	\$114.60
161299	75B-36X14-V	36" x 14"	\$100.84
87339	75B-36X18-V	36" x 18"	\$118.84
87340	75B-36X24-V	36" x 24"	\$123.65
330886	75B-36X36-V	36" x 36"	\$243.96
87341	75B-38X12-V	38" x 12"	\$94.56
128392	75B-38X14-V	38" x 14"	\$120.10
366402	75B-38X16-V	38" x 16"	\$114.49
418113	75B-38x22	38" x 22"	\$152.73
87343	75B-40X14-V	40" x 14"	\$109.24
350817	75B-40X16-V	40" x 16"	\$108.82
87344	75B-40X26-V	40" x 26"	\$157.79
87347	75B-42X12-V	42" x 12"	\$102.94
87348	75B-42X14-V	42" x 14"	\$116.82
87349	75B-42X16-V	42" x 16"	\$106.01
352662	75B-42X24-V	42" x 24"	\$157.14
352661	75B-42X42-V	42" x 42"	\$245.34
321261	75B-46X12-V	46" x 12"	\$111.34
87350	75B-46X14-V	46" x 14"	\$122.93
128511	75B-46X20-V	46" x 20"	\$147.55

HVAC No.	MFG Part No.	Size	Price
352776	75B-48X12-V	48" x 12"	\$110.88
87352	75B-48X14-V	48" x 14"	\$115.92
87353	75B-48X16-V	48" x 16"	\$115.92

**Round Fire Dampers**

Horizontal Installation



- 1-1/2 Hour fire rating
- 22 gauge interlocking steel blades
- 165 degree fusible link
- 22 gauge steel frame

HVAC No.	MFG Part No.	Size	Price
87407	75CR-3-H	3"	\$69.78
87409	75CR-4-H	4"	\$71.65
87413	75CR-6-H	6"	\$71.65
87417	75CR-8-H	8"	\$80.62
87396	75CR-10-H	10"	\$87.89
87398	75CR-12-H	12"	\$96.64
87400	75CR-14-H	14"	\$128.90
87402	75CR-16-H	16"	\$122.93
87403	75CR-18-H	18"	\$159.83
87405	75CR-20-H	20"	\$159.83

Vertical Installation



- 1-1/2 Hour fire rating
- 22 gauge interlocking steel blades
- 165 degree fusible link
- 22 gauge steel frame

HVAC No.	MFG Part No.	Size	Price
87408	75CR-3-V	3"	\$64.64
87410	75CR-4-V	4"	\$57.27
87414	75CR-6-V	6"	\$69.15
87418	75CR-8-V	8"	\$71.51
87397	75CR-10-V	10"	\$91.77
87401	75CR-14-V	14"	\$116.34
129609	75CR-16-V	16"	\$122.93
87404	75CR-18-V	18"	\$130.70
87406	75CR-20-V	20"	\$153.70
320925	75CR-28-V	28"	\$288.88

VENTILATION



**VENTILATION**

**Lloyd Industries**

**Thin Line Fire Dampers**

Horizontal Installation



- 1-1/2 Hour Fire Rating
- 2" Thin
- 22 gauge interlocking steel blades
- UL listed fusible link (165°F standard)
- Roll formed steel frame 22 gauge
- Negator stainless steel closure spring

HVAC No.	MFG Part No.	Size	Price
87425	75D-10X4-H	10" x 4"	\$42.17
87426	75D-10X6-H	10" x 6"	\$42.21
87430	75D-12X4-H	12" x 4"	\$39.21
87431	75D-12X6-H	12" x 6"	\$44.56
87428	75D-12X10-H	12" x 10"	\$51.51
87437	75D-14X6-H	14" x 6"	\$51.56
87439	75D-14X8-H	14" x 8"	\$53.91
87435	75D-14X12-H	14" x 12"	\$58.55
87444	75D-16X8-H	16" x 8"	\$53.91
87440	75D-16X14-H	16" x 14"	\$70.31
87442	75D-16X16-H	16" x 16"	\$70.31
87446	75D-18X12-H	18" x 12"	\$74.97
87447	75D-18X18-H	18" x 18"	\$93.62
321210	75D-22X20-H	22" x 20"	\$103.07
321209	75D-28X10-H	28" x 10"	\$82.05
160335	75D-30X10-H	30" x 10"	\$86.67
347956	75D-30X24-H	30" x 24"	\$123.67

Vertical Installation



- 1-1/2 Hour Fire Rating
- 2" Thin
- 22 gauge interlocking steel blades
- UL listed fusible link (165°F standard)
- Roll formed steel frame 22 gauge
- Negator stainless steel closure spring

HVAC No.	MFG Part No.	Size	Price
87462	75D-6X6-V	6" x 6"	\$33.77
87432	75D-12X6-V	12" x 6"	\$40.17
87433	75D-12X8-V	12" x 8"	\$42.42
87429	75D-12X10-V	12" x 10"	\$44.48
128821	75D-12X12-V	12" x 12"	\$46.45
87438	75D-14X6-V	14" x 6"	\$44.48
87434	75D-14X10-V	14" x 10"	\$48.47
87436	75D-14X14-V	14" x 14"	\$60.59
360953	75D-14X24-V	14" x 24"	\$196.85
87445	75D-16X8-V	16" x 8"	\$46.47

HVAC No.	MFG Part No.	Size	Price
87441	75D-16X14-V	16" x 14"	\$60.59
87443	75D-16X36-V	16" x 36"	\$100.97
87450	75D-18X6-V	18" x 6"	\$48.47
347697	75D-18X14-V	18" x 14"	\$70.41
347698	75D-18X16-V	18" x 16"	\$70.41
87448	75D-18X18-V	18" x 18"	\$78.81
87449	75D-18X24-V	18" x 24"	\$88.87
87451	75D-20X20-V	20" x 20"	\$78.81
87454	75D-24X6-V	24" x 6"	\$54.56
87453	75D-24X12-V	24" x 12"	\$70.71
87456	75D-30X10-V	30" x 10"	\$74.72
87457	75D-30X16-V	30" x 16"	\$90.89
87458	75D-30X18-V	30" x 18"	\$107.04
87459	75D-30X30-V	30" x 30"	\$145.80
87460	75D-36X36-V	36" x 36"	\$171.38
87461	75D-48X14-V	48" x 14"	\$118.21
347955	75D-48X24-V	48" x 24"	\$146.41

**Horizontal Thin Line Fire Dampers**

Horizontal Installation



- 1-1/2 Hour Fire Rating
- 2" Thin
- 22 gauge interlocking steel blades
- UL listed fusible link (165°F standard)
- Roll formed steel frame 22 gauge
- Negator stainless steel closure spring

HVAC No.	MFG Part No.	Size	Price
450597	75DH-10X10	10" x 10"	\$53.93
450596	75DH-12X12	12" x 12"	\$59.05
450595	75DH-18X16	18" x 16"	\$90.51
450594	75DH-22X16	22" x 16"	\$97.61
450591	75DH-22X22	22" x 22"	\$120.27
450593	75DH-24X12	24" x 12"	\$89.92
450592	75DH-26X12	26" x 12"	\$95.03

**Access Doors**



- 1" thick double cam access door with flange
- Double panel door
- 26 gauge galvanized frame

HVAC No.	MFG Part No.	Size	Price
354227	80-HAD-10X10	10" x 10"	\$142.36
353081	80-HAD-14X14	14" x 14"	\$150.38
330848	80-HAD-16X16	16" x 16"	\$199.48
159779	80-HAD-18X18	18" x 18"	\$223.15
351701	80-HAD-20X20	20" x 20"	\$209.96
353152	80-HAD-24X20	24" x 20"	\$220.46
351766	80-HAD-24X24	24" x 24"	\$220.46
448429	80-HAD-30X30	30" x 30"	\$431.99

**VENTILATION**

**Lloyd Industries**

**Control Dampers**



- Available in steel and aluminum
- Available in parallel and opposed blade
- Various operators available

HVAC No.	MFG Part No.	Description	Size	Price
160370	AC-20-8X8	Opposed Blade Damper	8" x 8"	\$143.01
130369	AC-20-12X12	Opposed Blade Damper	12" x 12"	\$709.97
129328	AC-20-14X24	Opposed Blade Damper	14" x 24"	\$606.33
144938	AC-20-20X24	Opposed Blade Damper	20" x 24"	\$253.51
392679	AC-10-24X24	Parallel Blade Damper	24" x 24"	\$698.00
392677	AC-10-24X36	Parallel Blade Damper	24" x 36"	\$770.41

**Ceiling Radiation Dampers**



- 3 Hour Rating
- UL Listed Link (165°F Standard)
- Blades 22 gauge galvanized steel
- Ceramic fiber with fiberglass cover

HVAC No.	MFG Part No.	Size	Price
327366	CRD-10X10	10" x 10"	\$55.55
423001	CRD-10X4	10" x 4"	\$46.20
136682	CRD-10X6	10" x 6"	\$61.85
127944	CRD-10X8	10" x 8"	\$52.19
162323	CRD-12X10	12" x 10"	\$62.64
128713	CRD-12X12	12" x 12"	\$68.00
162321	CRD-12X6	12" x 6"	\$44.94
162322	CRD-12X8	12" x 8"	\$55.71
444972	CRD-14X10	14" x 10"	\$73.61
128717	CRD-14X14	14" x 14"	\$72.14
345349	CRD-15X15	15" x 15"	\$78.16
128716	CRD-16X16	16" x 16"	\$72.14
349089	CRD-16X6	16" x 6"	\$62.52
135432	CRD-18X18	18" x 18"	\$86.98
135433	CRD-20X20	20" x 20"	\$100.91
128937	CRD-24X12	24" x 12"	\$85.22
128715	CRD-24X24	24" x 24"	\$113.40
162317	CRD-6X4	6" x 4"	\$39.96
87486	CRD-6X6	6" x 6"	\$39.73
160456	CRD-7X7	7" x 7"	\$41.22
162318	CRD-8X4	8" x 4"	\$39.96
162319	CRD-8X6	8" x 6"	\$41.79
87487	CRD-8X8	8" x 8"	\$43.43
162320	CRD-9X6	9" x 6"	\$55.71
130336	CRD-9X9	9" x 9"	\$55.55
128714	CRD-9X9	9" x 9"	\$55.71

**Fire / Smoke Dampers**



- Combination Fire Smoke Dampers are used to prevent the passage of both flame and smoke
- Available in 3 classes; ultra-low leakage (class 1), low leakage (class 2), and leakage (class 3)
- Electric motors offered in 24 volt, 120 volt and 220 volt, with or without an end switch
- Can be manufactured with externally mounted motors or internally mounted motors

HVAC No.	MFG Part No.	Size	Price
368181	FSD-111-1-PB 12X12	12" x 12"	\$794.98
366231	FSD-111-1-PB 14X12	14" x 12"	\$767.45
366230	FSD-111-1-PB 14X14	14" x 14"	\$708.96
371864	FSD-111-1-PB 14X28	14" x 28"	\$989.12
366213	FSD-111-1-PB 20X20	20" x 20"	\$876.83
392179	FSD-111-1-PB 22X20	22" x 20"	\$835.07
348961	FSD-111-1-PB 40X16	40" x 16"	\$1,622.92
446522	FSD-111-1CR-4	4" Round	\$750.79
446521	FSD-111-1CR-6	6" Round	\$750.79
446523	FSD-111-1CR-8	8" Round	\$761.73

**Backdraft Dampers**



- Available in round, square or rectangular
- Available with combination louver
- Available with front or rear flange

HVAC No.	MFG Part No.	Description	Size	Price
446110	LBD-1-14X14	Vertical	14" x 14"	\$226.86
415780	LBD-1-24X24	Vertical	24" x 24"	\$310.42
446593	LBD1-1H 14X8	Horizontal	14" x 8"	\$157.75
446587	LBD1-1V 20X8	Vertical	20" x 8"	\$288.27

**VENTILATION**

**Lloyd Industries**

**Fusible Links**

HVAC No.	MFG Part No.	Temperature	Price
87495	LINK-135	135 °F	\$11.82
378983	LINK-165	165 °F	\$25.41
378984	LINK-165	165 °F, No Hooks	\$11.03
378985	LINK-165	165 °F Short Hooks	\$10.86
378986	LINK-165	165 °F	\$23.10
87497	LINK-212	212 °F	\$14.89
87498	LINK-285	285 °F	\$17.07
87499	LINK-375	375 °F	\$21.42

**Portals Plus**

**Alumi-Flash System**

**Standard Base Kit**



- Compatible with all types of roof systems
- Single cap accommodates a variety of pipes, tubes and angle irons from 2" to 6"
- Base is 14" diameter with 4" height
- EPDM cap eliminates roof leaks by allowing penetrations to expand, contract and vibrate independently
- EPDM has service temperature of -60°F to +270°F

HVAC No.	MFG Part No.	Description	Price
457299	22015	Standard Mill Finish Base w/ Black #126 Cap	\$191.90
457300	22025	Standard Mill Finish Base w/ Black #212 Cap	\$191.90
457301	22035	Standard Mill Finish Base w/ Black #412 Cap	\$191.90
457302	22045	Standard Mill Finish Base w/ Black #481 Cap	\$191.90
457303	22051	Standard Mill Finish Base w/ Black #182 Cap	\$345.64
457304	22065	Standard Mill Finish Base w/ White #126 Cap	\$194.50
457305	22075	Standard Mill Finish Base w/ White #212 Cap	\$194.50

**Primed Extra Wide Base Kit**



- Compatible with all types of roof systems
- Single cap accommodates a variety of pipes, tubes and angle irons from 2" to 6"
- Base is 18" diameter with 4" height
- EPDM cap eliminates roof leaks by allowing penetrations to expand, contract and vibrate independently
- EPDM has service temperature of -60°F to +270°F

HVAC No.	MFG Part No.	Description	Price
457306	22215	Extra Wide Primed Base w/ Black #126 Cap	\$248.49
457307	22225	Extra Wide Primed Base w/ Black #212 Cap	\$248.49
457308	22235	Extra Wide Primed Base w/ Black #412 Cap	\$248.49
457309	22245	Extra Wide Primed Base w/ Black #481 Cap	\$81.10
457310	22265	Extra Wide Primed Base w/ White #126 Cap	\$251.73
458685	22275	Extra Wide Primed Base w/ White #212 Cap	\$257.73

**Mill Finish Extra Wide Base Kit**



- Compatible with all types of roof systems
- Single cap accommodates a variety of pipes, tubes and angle irons from 2" to 6"
- Base is 18" diameter with 4" height
- EPDM cap eliminates roof leaks by allowing penetrations to expand, contract and vibrate independently
- EPDM has service temperature of -60°F to +270°F

HVAC No.	MFG Part No.	Description	Price
457311	23015	Extra Wide Mill Finish Base w/ Black #126 Cap	\$210.92
457312	23025	Extra Wide Mill Finish Base w/ Black #212 Cap	\$210.92
457313	23035	Extra Wide Mill Finish Base w/ Black #412 Cap	\$210.92
457314	23045	Extra Wide Mill Finish Base w/ Black #481 Cap	\$210.92
457315	23065	Extra Wide Mill Finish Base w/ White #212 Cap	\$214.05

VENTILATION

## VENTILATION

### Portals Plus

#### Alumi-Flash System

##### Mill Finish Extra Tall Base Kit



- Compatible with all types of roof systems
- Single cap accommodates a variety of pipes, tubes and angle irons from 2" to 6"
- Base is 14" diameter with 13" height
- EPDM cap eliminates roof leaks by allowing penetrations to expand, contract and vibrate independently
- EPDM has service temperature of -60°F to +270°F

HVAC No.	MFG Part No.	Description	Price
457316	24015	Extra Tall Mill Finish Base w/ Black #126 Cap	\$345.70
457317	24025	Extra Tall Mill Finish Base w/ Black #212 Cap	\$345.70
457318	24035	Extra Tall Mill Finish Base w/ Black #412 Cap	\$345.70
457319	24045	Extra Tall Mill Finish Base w/ Black #481 Cap	\$345.70
457320	24065	Extra Tall Mill Finish Base w/ White #212 Cap	\$178.94

##### Alumi-Flash Components

HVAC No.	MFG Part No.	Description	Price
457323	29015	Standard Mill Finish Base Only	\$92.99
457324	29025	Large Mill Finish Base Only	\$176.76
457325	29035	Extra Wide Mill Finish Flash Base Only	\$117.45
457326	29045	Extra Tall Mill Finish Base Only	\$272.58
457328	29215	Black #126 Cap w/Clamps, Fits 1 Pipe, 2"-6" Diameter	\$116.91
457329	29225	Black #212 Cap w/Clamps, Fits 4 Pipes, Two 3/8"-1", Two 1"-2"	\$116.91
457330	29235	Black #412 Cap w/Clamps, Fits 4 Pipes, 1"-2"	\$116.91
457331	29245	Black #481 Cap w/Clamps, Fits 4 Pipes, 3/8"-1"	\$116.91
457332	29255	Black #182 Cap w/Clamps, Fits 1 Pipes, 8"-12", Fits Large Base	\$239.44
457333	29265	White #126 Cap w/Clamps, Fits 1 Pipe, 2"-6" Diameter	\$134.78
457334	29275	White #212 Cap w/Clamps, Fits 4 Pipes, Two 3/8"-1", Two 1"-2"	\$134.78

### Roof Curb Pipe Portal Systems

#### Single Pipe Portal



- A versatile, leakproof and weathertight solution to routing pipes through the roof
- Designed to allow vertical and horizontal pipe movement
- Accommodates pipe sizes 3/8" to 12"
- Can accommodate up to 5 pipes, depending on cap selected
- Use with Portals Plus roof curb

HVAC No.	MFG Part No.	Description	Price
455967	32005	Small Single Cover w/ Black #126 Cap	\$246.69
457339	32015	Small Single Cover w/ Black #212 Cap	\$240.93
457340	32025	Small Single Cover w/ Black #412 Cap	\$240.93
446982	32035	Small Single Cover w/ Black #481 Cap	\$249.80
457341	32041	Large Single Cover w/ Black #182 Cap	\$384.36
457342	32055	Small Single Cover w/ White #126 Cap	\$243.98
446983	32065	Small Single Cover w/ White #212 Cap	\$249.80
448307	29430	5-Cap Single Cover with 5 Black #555 Caps	\$0.04

#### Double Pipe Portal



- A versatile, leakproof and weathertight solution to routing pipes through the roof
- Designed to allow vertical and horizontal pipe movement
- Accommodates pipe sizes 3/8" to 12"
- Can accommodate up to 8 pipes, depending on caps selected
- Use with Portals Plus roof curb

HVAC No.	MFG Part No.	Description	Price
457365	36002	Double Cover w/ Black #126 and #212 Caps	\$656.19
457366	36012	Double Cover w/ Black #126 and #412 Caps	\$656.19
457367	36022	Double Cover w/ Black #126 and #481 Caps	\$656.19
457368	36032	Double Cover w/ Black #126 and #126 Caps	\$656.19
457369	36042	Double Cover w/ Black #212 and #212 Caps	\$656.19

## VENTILATION

### Portals Plus

#### Roof Curb Pipe Portal Systems

##### Double Pipe Portal

HVAC No.	MFG Part No.	Description	Price
457370	36052	Double Cover w/ Black #212 and #412 Caps	\$656.19
457371	36062	Double Cover w/ Black #212 and #481 Caps	\$656.19
457372	36092	Double Cover w/ Black #412 and #412 Caps	\$656.19
457373	36102	Double Cover w/ Black #412 and #481 Caps	\$656.19

##### Single and Double Roof Curbs for Single and Double Pipe Portals

- Portals Plus roof curbs designed to work with Portals Plus single and double pipe portals



HVAC No.	MFG Part No.	Description	Price
446981	32101	Straight Sided Curb, Small, 12" x 12" x 11"H	\$0.04
457343	32111	Canted Curb, Small, 12" x 12" x 8"H	\$259.25
457344	32121	Raised Canted Curb, Small, 12" x 12" x 9-1/2"H	\$259.25
457345	32131	Straight Sided Curb, Large, 20" x 20" x 11"H	\$0.04
457346	32141	Canted Curb, Large, 20" x 20" x 8"H	\$445.37
457347	32151	Raised Canted Curb, Large, 20" x 20" x 9-1/2"	\$445.37
457348	32161	Straight Sided Curb, Double, 27-1/2" x 12" x 11"H	\$223.17
457349	32171	Canted Curb, Double, 27-1/2" x 12" x 8"H	\$491.67
457350	32181	Raised Canted Curb, Double, 27-1/2" x 12" x 9-1/2"	\$491.67

##### Pipe Portal Components

HVAC No.	MFG Part No.	Description	Price
457327	29205	Small Single Cover, Fits #126 Cap	\$144.27
457335	29285	Small Single Cover, Fits #212, #412, #481 Caps	\$144.27
457328	29215	Black #126 Cap, w/ Clamps	\$116.91
457329	29225	Black #212 Cap, w/ Clamps	\$116.91
457330	29235	Black #412 Cap, w/ Clamps	\$116.91
457331	29245	Black #481 Cap, w/ Clamps	\$116.91
457332	29255	Black #182 Cap, w/ Clamps	\$239.44
457333	29265	White #126 Cap, w/ Clamps	\$134.78
457334	29275	White #212 Cap, w/ Clamps	\$134.78
457336	29295	Large Single Cover, Fits #182 Cap	\$217.48
457337	29305	Double Cover	\$454.34
458686	29431	Single Cover, Fits #555 Caps	\$211.47
458687	29432	Black #555 Caps, w/ Clamps	\$23.35

### Equipment Rails



- Provides a uniform mounting pedestal for condenser, blowers and other roof mounted equipment
- High load bearing capacity due to welded internal gussets
- Available in a variety of heights and lengths

HVAC No.	MFG Part No.	Description	Price
457356	35231	Rail ER-2A, 12" High x 3' Long	\$342.09
457357	35241	Rail ER-2A, 12" High x 4' Long	\$441.04
457358	35261	Rail ER-2A, 12" High x 6' Long	\$675.55
457359	35331	Rail ER-3A, 8" High x 3' Long	\$305.53
457360	35341	Rail ER-3A, 8" High x 4' Long	\$397.99
457361	35361	Rail ER-3A, 8" High x 6' Long	\$600.22
457362	35431	Rail ER 4A, 9-1/2" High x 3' Long	\$327.01
457363	35441	Rail ER 4A, 9-1/2" High x 4' Long	\$417.38
457364	35461	Rail ER 4A, 9-1/2" High x 6' Long	\$623.91

## VENTILATION

### Field Controls

#### Inline Fan



HVAC No.	MFG Part No.	Size	CFM	Price
61940	FR100	4"	108 CFM	\$655.20
61941	FR110	4"	167 CFM	\$722.40
61942	FR125	5"	131 CFM	\$371.66
61943	FR140	6"	213 CFM	\$390.24
61944	FR150	6"	243 CFM	\$408.83
61945	FR160	6"	289 CFM	\$511.04
61946	FR200	8"	408 CFM	\$520.17
61947	FR225	8"	429 CFM	\$607.47
61948	FR250	10"	563 CFM	\$694.74

#### Tjernlund

#### Booster Fan



- P Series are plastic housing exhaust fans ideal for humid environments
- Available in 4" - 8" sizes

HVAC No.	MFG Part No.	Size	Price
118491	P-4	4"	\$316.97
118492	P-6	6"	\$378.36

#### UnderAire™ Crawlspace Ventilator



- 2 Models to choose from
- V1D single fan and V2D double fan
- V1D and V2D include dehumidistat

HVAC No.	MFG Part No.	CFM	Price
360784	V1D	110 CFM	\$267.67
366439	V2D	220 CFM	\$344.09

#### Artis Metals

#### Wall Cap, Aluminum



- Aluminum vent hoods 4" - 12"
- Some models with screens and dampers

HVAC No.	MFG Part No.	Description	Size	Price
414390	DWVA 4	With Damper	4"	\$55.17
22321	SWVA 4	With Screen	4"	\$51.72
414391	DWVA 5	With Damper	5"	\$66.17
414392	DWVA 6	With Damper	6"	\$65.50
22322	SWVA 6	With Screen	6"	\$71.80
164037	DWVA 7	With Damper	7"	\$93.74
323851	SDWVA 7	With Damper and Screen	7"	\$67.79
22307	DWVA 8	With Damper	8"	\$92.90
22323	SWVA 8	With Screen	8"	\$100.99
22318	SDWVA 8	With Damper and Screen	8"	\$79.67
22306	DWVA 10	With Damper	10"	\$127.32
22319	SWVA 10	With Screen	10"	\$97.02
160380	SDWVA 10	With Damper and Screen	10"	\$106.85
22320	SWVA 12	With Screen	12"	\$122.64

#### Gravity Attic Ventilator, Galvanized



HVAC No.	MFG Part No.	Size	Price
414789	JV 428 12CL	4", Normal Clearance	\$53.15
414793	JV 428 HC	4", Normal Clearance, With Downward Extension	\$48.95
322138	JV 626	6", Normal Clearance	\$53.15
414800	JV 626 12CL	6", With 12" Throat for Extra Clearance	\$65.37
414804	JV 626 HC	6", Normal Clearance, With Downward Extension	\$63.46
414816	JV 826 12CL	8", With 12" Throat for Extra Clearance	\$74.36



# VENTILATION

## Artis Metals

### Gravity Attic Ventilator, Galvanized

HVAC No.	MFG Part No.	Size	Price
414819	JV 826 DSA	8", Normal Clearance, With Soft Aluminum Flange	\$85.58
414820	JV 826 HC	8", Normal Clearance with Downward Extension	\$72.05
414758	JV 1026	10", Normal Clearance	\$86.04
414760	JV 1026 12CL	10", With 12" Throat for Extra Clearance	\$99.35
414765	JV 1226	12" Normal Clearance	\$106.18
414767	JV 1226 12CL	12", With 12" Throat for Extra Clearance	\$95.51

### Roof Mount Exhaust Vent With Screen



- Available in aluminum and galvanized
- Black available in some models

HVAC No.	MFG Part No.	Size	Price
415039	RDVA 4	4", Aluminum	\$98.28
415041	RDVA 6	6", Aluminum	\$88.16
415042	RDVA 7	7", Aluminum	\$159.92
415043	RDVA 8	8", Aluminum	\$111.83
415049	RDVG 1010	10" x 10", Galvanized, Painted Black	\$124.40
415052	RDVG 6	6", Galvanized	\$98.36
415053	RDVG 610	6" x 10", Galvanized, Painted Black	\$100.67
415055	RDVG 8	8", Galvanized	\$99.86

### Flashing for 0/12 Pitch



- Available in 3" to 24" sizes
- Available for pitched or flat roofs

HVAC No.	MFG Part No.	Size	Notes	Price
414488	FP 10	10", Single Wall	Requires Storm Collar	\$70.29
415123	SC 10	10" Storm Collar for FP 10		\$28.48

### Roof Cap for Fossil Fuel Chimneys



- Used to prevent downdrafts
- Available in galvanized, stainless and aluminum
- Sizes from 3" to 20"

HVAC No.	MFG Part No.	Size	Price
414634	GVC 1024	10" Galvanized	\$91.35

### Backdraft Damper, Butterfly



- Available galvanized 4" to 24"

HVAC No.	MFG Part No.	Size	Price
322139	BD 6	6", Galvanized	\$55.36
414321	BD 7	7", Galvanized	\$54.66

### Backdraft Damper, Offset Pin



- Galvanized 4" to 12"

HVAC No.	MFG Part No.	Size	Price
414861	OSP 4	4", Galvanized	\$55.00
414863	OSP 6	6" Galvanized	\$55.00

VENTILATION

# VENTILATION

## Fantech

### Backdraft Damper, Spring Loaded



HVAC No.	MFG Part No.	Size	Price
61955	RSK4	4"	\$32.93
61956	RSK5	5"	\$42.00
61957	RSK6	6"	\$42.00
61958	RSK8	8"	\$63.00
61953	RSK10	10"	\$73.50
61954	RSK12	12"	\$105.00
321826	RSK14	14"	\$279.83
321828	RSK16	16"	\$340.07

## Renewaire

### Energy Recovery Ventilator



- Available from 90-300 CFM
- Utilizes RenewaAire's exceptional static plate energy exchange core
- Quiet, powerful blowers eliminate the need for air balancing in most applications
- Home Ventilating Institute verified performance
- No condensate or drain line
- No mounting restrictions, mount vertical or horizontal
- Integral mounting flanges are standard

HVAC No.	MFG Part No.	Size	Max Home Size	Price
418523	EV90	90 CFM	2000 Square Feet	\$1,384.28
366540	EV130	50-140 CFM	2700 Square Feet	\$1,647.74
390585	EV200	100-200 CFM	4000 Square Feet	\$2,023.33
361632	EV300	150-300 CFM	6000 Square Feet	\$2,348.47

### Accessory Items



- Wall caps, timers and backdraft dampers available for ventilators

HVAC No.	MFG Part No.	Description	Price
389831	FA10-1	Wall Cap 10"	\$106.64
392221	FA12-1	Wall Cap, 12"	\$114.85
366542	FM	Percentage Timer Control With Furnace Interlock	\$163.55
446238	PBL	Push Button Timer, Room Mounted	\$71.09
446237	PTL	Percentage Timer Control	\$134.53
392231	TC7D-W	Programmable Time, Wall Mount	\$305.76
414312	BD10	Backdraft Damper, 10"	\$88.85
353129	BD8	Backdraft Damper, 8"	\$65.75

## Honeywell

### Fresh Air Vent Damper EARD



- Used for fresh air intake for ventilation, or for combustion makeup air
- 24vac power
- Powered open / spring closed

HVAC No.	MFG Part No.	Size	Operation	Price
456390	EARD6TZ	6" Round	Power Open / Spring Closed	\$279.15
461452	EARD8TZ	8" Round	Power Open / Spring Closed	\$299.67

VENTILATION