

Residential Heating and Cooling Equipment

Thermo Pride Mobile Home Furnaces

Thermo Pride Mobile Home High Efficiency Gas Furnaces

- 95% AFUE
- LP conversion kit is included
- Up to 3 tons of cooling capacity
- Transferable limited lifetime heat exchanger warranty
- 10 year parts warranty
- "Peace of Mind" 10 year unit replacement warranty
- Made in the USA



HVAC No.	MFG Part No.	Description	Input MBH	AFUE	Dimensions (W x D x H)	Price
461628	CMA3-50D36N	Gas-Fired, Without Coil Cabinet	50 MBH	95%	18" x 25-3/4" x 57"	\$3146.40
444954	CMA3-75D36N	Gas-Fired, Without Coil Cabinet	75 MBH	95%	18" x 25-3/4" x 57"	\$3210.60

Thermo Pride Mobile Home Mid-Efficiency Gas Furnaces

- Up to 82% AFUE
- LP conversion kit is included
- Up to 3 tons of cooling capacity
- Transferable limited lifetime heat exchanger warranty
- Fits CE111S cabinet (see accessories table) for adding coil
- 10 year parts warranty
- "Peace of Mind" 10 year unit replacement warranty
- Made in the USA



HVAC No.	MFG Part No.	Description	Input MBH	AFUE	Dimensions (W x D x H)	Price
461627	GMD1-60N	Gas-Fired, Without Coil Cabinet	60 MBH	82%	18" x 25-3/4" x 57"	\$2393.98
456702	GMD1-80N	Gas-Fired, Without Coil Cabinet	80 MBH	81%	18" x 25-3/4" x 57"	\$2455.32

Thermo Pride Mobile Home Oil Furnaces

- 86% AFUE
- Up to 3 tons of cooling capacity
- Transferable, limited lifetime heat exchanger warranty
- 10 year parts warranty
- "Peace of Mind" 10 Year unit replacement warranty
- Made in the USA



HVAC No.	MFG Part No.	Description	Output MBH	AFUE	Dimensions (W x D x H)	Price
417369	OME-72D36	Oil Fired, With Beckett AFG Burner	60/72 MBH	86%	18" x 24-3/4" x 58"	\$3226.66

Installation Accessories for Thermo Pride Mobile Home Furnaces

- Thermo Pride offers a complete line of installation accessories to make every furnace install go quickly and efficiently.

HVAC No.	MFG Part No.	Description	Price
417372	AOPS7483	Concentric Vent Kit for 4" Flue	\$248.06
461620	AOPS7544	Concentric Vent Kit for 5" Flue	\$308.70
461609	AOPS7484	Dual Pipe Flashing Kit	\$90.62
461619	AOPS7518	Flexible Stainless Vent Pipe Kit	\$253.96
450047	VP-1	34" Vent Pipe	\$154.06
417376	TRJ-1	Roof Jack, One Foot High	\$457.40
417377	TRJ-2	Roof Jack, Two Feet High	\$507.88
450046	TRJ-3	Roof Jack, Three Feet High	\$555.20
417375	AOPS7512	Roof Jack Combustion Air Kit	\$376.68
461618	TSA-25	Slope Adaptor for Roof Pitch 2-1/2" - 12"	\$217.28

Residential Heating and Cooling Equipment

Thermo Pride Mobile Home Furnaces

Installation Accessories for Thermo Pride Mobile Home Furnaces (Continued)

HVAC No.	MFG Part No.	Description	Price
459733	TSA-30	Slope Adaptor for Roof Pitch 3-1/2" - 12"	\$239.86
417371	70-BASE	Combustible Floor Base, Fits OME, CMA3	\$368.62
461622	01COT-BASE	Cottage Base	\$387.46
464502	AOPS8394	Beckett AFG Sidewall Vent Kit	\$438.58
465105	AOPS8397	Beckett AFT Combustion Air Kit	\$289.40
417374	CE111S	Coil Cabinet, 18-1/4" x 24-1/4" x 20"	\$480.58
465550	AOPS7547	Filter Rack for 16" x 25" x 2" Filter	\$218.76
466141	PK202X202	Plenum Kit, 20-1/4" x 20-1/4" x 36"	\$270.12

Coils for Thermo Pride and REVOLV Mobile Home Furnaces

- Uncased copper upflow/downflow coil, designed specially for mobile home use
- Fits in the Thermopride CE111S cabinet
- Fits in the REVOLV RG1077C3 cabinet
- Factory-installed R410a TXV
- Blowoff-resistant drain pan design
- A single coil will work with both the GSX13 and GSX14 condensers in 2, 2.5 or 3 ton size
- Refrigerant connections turn downward, eliminating the need to braze elbows in, speeding up installation, and reducing potential for lineset kinking
- 5 year warranty without registration, 10 year warranty with registration (register at adpwarranty.com)
- Made in the USA



HVAC No.	MFG Part No.	Description	Dimensions (W x D x H)	Price
464580	M36E326	2.5 - 3 Ton Mobile Home Coil	18" x 19-1/2" x 15"	\$869.36

Condensers for Thermo Pride and REVOLV Mobile Home Furnaces

- Up to 14 SEER
- Energy efficient compressor
- Factory installed inline filter drier
- Brass liquid & suction line valves
- Contactor with lug connection
- Ground lug connection
- 10 year parts limited warranty - Registration Required
- AHRI Numbers shown are for match to the ADP Mobile Home Coil M36E326
- Assembled in the USA



HVAC No.	MFG Part No.	Nom Clg	SEER/EER	AHRI No.	Dimensions (W x D x H)	Lineset Size	Price
395374	GSX140241*	2 Ton	14/11	201406813	26" x 26" x 27-1/2"	3/8" x 3/4"	\$2114.20
395375	GSX140301*	2.5 Ton	14/11	202358842	29" x 29" x 32-1/2"	3/8" x 3/4"	\$2210.62
395376	GSX140361*	3 Ton	14/11	201202895	29" x 29" x 32-1/2"	3/8" x 7/8"	\$2484.14
368445	GSX130241*	2 Ton	13/11	202358786	26" x 26" x 27-1/2"	3/8" x 3/4"	\$1873.14
368446	GSX130301*	2.5 Ton	13/11	202358787	26" x 26" x 27-1/2"	3/8" x 3/4"	\$1955.36
368447	GSX130361*	3 Ton	13/11	202358788	26" x 26" x 27-1/2"	3/8" x 7/8"	\$2197.56

Residential Heating and Cooling Equipment

REVOLV Mobile Home Furnaces

REVOLV Mobile Home Furnaces

- Zero Clearance feature allows these furnaces to be installed where space is a premium.
- Built-In Coil Cabinet on select models provides ease of installation and highly efficient operating performance
- Air Conditioner Ready models have blowers capable of handling up to 4 tons of air conditioning.
- Modern hot surface ignition means no pilot lights to blow out
- Sealed Combustion design provides quiet operation, increased operating efficiency and reduced drafts.
- 10 year heat exchanger warranty
- 2 year parts warranty
- 1 year labor warranty



HVAC No.	MFG Part No.	Description	Input MBH	Tons Clg	AFUE	Dims (W x D x H)	Price
469002	MG1E-077B	Gas Fired, With Coil Cabinet	77 MBH	Up to 4T	80%	19-3/4" x 23-3/4" x 76"	\$2365.02
468425	MG1E-077A	Gas Fired, No Coil Cabinet	77 MBH	Up to 4T	80%	19-3/4" x 23-3/4" x 56"	\$2327.84

Accessories for REVOLV Mobile Home Furnaces

- To select the right roof jack, measure from the top of the furnace up through the centerline of the existing vent to the point on the surface of the roof where the vent comes out.
- That is your roof jack length.
- Then select the roof jack for the correct roof pitch (0/12 is flat, 2/12 is sloped).

HVAC No.	MFG Part No.	Description	Price
451860	903658	Roof Jack, 15-23" Furnace Top to Roof, 0/12 Pitch	\$311.44
451861	903662	Roof Jack, 21-35" Furnace Top to Roof, 2/12 Pitch	\$318.82
451862	903663	Roof Jack, 27-47" Furnace Top to Roof, 2/12 Pitch	\$336.46
451863	903664	Roof Jack, 35-63" Furnace Top to Roof, 2/12 Pitch	\$420.98
55500	084000.7141	Roof Jack, 99-120" Furnace Top to Roof	\$308.02
451866	903107	Roof Jack Extension, 18"	\$187.96

Residential Heating and Cooling Equipment

Goodman Mobile Home Package Units

Goodman Mobile Home Package A/C Units

- 14 SEER
- Capable of supporting up to 0.5" External Static Pressure
- Energy efficient compressor
- Copper tube, aluminum fin condenser coil
- Totally enclosed, permanently lubricated condenser fan motor
- 5kW - 20kW electrical heat kit available as field-installed option
- 10 year parts limited warranty - Registration Required
- Assembled in the USA



HVAC No.	MFG Part No.	Nom Clg	Elec Heat Options	Dims (W x D x H)	Weight	Price
385503	GPC1424H41*	2 Tons	4.75, 7.00, 9.50	66" x 33" x 30-1/2"	305 lbs	\$4287.88
385504	GPC1430H41*	2.5 Tons	4.75, 7.00, 9.50, 14.00	66" x 33" x 30-1/2"	310 lbs	\$4379.16
385505	GPC1436H41*	3 Tons	4.75, 7.00, 9.50, 14.00	66" x 33" x 30-1/2"	315 lbs	\$4413.38

Goodman Mobile Home Package Heat Pump Units

- Up to 14 SEER
- Capable of supporting up to 0.5" External Static Pressure
- Copper tube, aluminum fin condenser coil
- Totally enclosed, permanently lubricated condenser fan motor
- 5kW - 20kW electrical heat kit available as field-installed option
- Fully insulated blower compartment with convenient access panels
- Liquid line filter drier
- 10 year parts limited warranty - Registration Required
- Assembled in the USA



HVAC No.	MFG Part No.	Nom Clg	Elec Heat Options	Dims (W x D x H)	Weight	Price
385509	GPH1424H41*	2 Tons	4.75, 7.00, 9.50	66" x 34" x 30"	325 lbs	\$4920.00
385510	GPH1430H41*	2.5 Tons	4.75, 7.00, 9.50, 14.00	66" x 34" x 30"	325 lbs	\$5102.56
385511	GPH1436H41*	3 Tons	4.75, 7.00, 9.50, 14.00	66" x 34" x 35"	385 lbs	\$5556.68

Accessories for Mobile Home Package Units

- These are used in these applications:
 - When there is a furnace to provide heating combined with a package unit for cooling
 - When you are replacing a furnace with a package heat pump unit.
 - When there is a furnace combined with a package heat pump unit.
- This situation is most commonly seen in double-wide mobile homes.

HVAC No.	MFG Part No.	Description	Price
55506	1101225	Flex Duct, 12" x 25', for Double-Wide	\$144.70
451868	11121212	Wye Pack for Double-Wide	\$99.48
451869	112012	Accessory Kit, 12" Supply/Return	\$249.72
451870	901993A	Duct Connector, 12" for Double-Wide	\$137.54
451859	901083	Backdraft Damper, Fits All Units	\$296.30

Residential Heating and Cooling Equipment

Spirit Oil Furnaces

Spirit High Boy Oil Furnaces

- 85% AFUE
- Low-profile design that is typically shorter than most highboy furnaces
- Multi-speed PSC or Variable speed ECM blower motor
- Limited Lifetime Heat Exchanger Warranty
- 5 Year Parts Warranty
- Made in the USA



HVAC No.	MFG Part No.	Output MBH	Motor	Dimensions (W x D x H)	Vent Size	Price
413827	VHF-ABP	70 / 85 / 106 MBH	PSC	21" x 30" x 45"	5"	\$3008.34
450157	VHF-ABT	70 / 85 / 106 MBH	ECM	21" x 30" x 45"	5"	\$3871.70
456523	VH8FA119P60B	101 / 119 / 132 MBH	PSC	24-1/2" x 36-1/2" x 50-1/8"	7"	\$3628.88
457625	VH8FA119T60B	101 / 119 / 132 MBH	ECM	24-1/2" x 36-1/2" x 50-1/8"	7"	\$4492.26

Spirit Low Boy Oil Furnaces

- 85% AFUE
- Low-profile design
- Multi-speed PSC or Variable speed ECM blower motor
- Limited Lifetime Heat Exchanger Warranty
- 5 Year Parts Warranty
- Made in the USA



HVAC No.	MFG Part No.	Output MBH	Motor	Dimensions (W x D x H)	Flue	Vent	Price
460069	OL20-151FD	153 MBH	ECM	27" x 58-1/2" x 50-1/2"	Front	7"	\$5416.62
450721	VLF-CBP	70 / 88 / 98 / 114 MBH	PSC	22-1/4" x 47" x 41-1/2"	Front	9"	\$3029.92
450722	VLR-CBP	70 / 88 / 98 / 114 MBH	PSC	22-1/4" x 47" x 41-1/2"	Rear	9"	\$3002.94

Residential Heating and Cooling Equipment

Olsen Oil Furnaces

Olsen High Boy Oil Furnaces

- Up to 86.2% AFUE
- Multiple speed blowers eliminate guests of hot or cold air to increase indoor comfort
- Direct Vent version available
- Designed for easy service & maintenance
- Limited lifetime heat exchanger warranty
- 5 year parts warranty
- Available in areas served by our Pittsburgh and Youngwood branches



HVAC No.	MFG Part No.	Output MBH	Motor	Dimensions (W x D x H)	Vent	Price
429971	HML80C2	91 MBH	PSC	22" x 30-3/4" x 49-5/8"	5"	\$3151.52

Olsen Low Boy Oil Furnaces

- Up to 86.2% AFUE
- Multiple speed blowers eliminate guests of hot or cold air to increase indoor comfort
- Designed for easy service & maintenance
- Limited lifetime heat exchanger warranty
- 5 year parts warranty
- Available in areas served by our Pittsburgh and Youngwood branches



HVAC No.	MFG Part No.	Output MBH	Motor	Dimensions (W x D x H)	Vent	Price
438116	BML80B2	91 MBH	PSC	22" x 51-1/2" x 32"	5"	\$3106.86

Olsen Multi-Position Oil Furnaces

- Up to 86.2% AFUE
- Multiple speed blowers eliminate guests of hot or cold air to increase indoor comfort
- Designed for easy service & maintenance
- Limited lifetime heat exchanger warranty
- 5 year parts warranty
- Available in areas served by our Pittsburgh and Youngwood branches



HVAC No.	MFG Part No.	Output MBH	Motor	Dimensions (W x D x H)	Vent	Price
448086	UML80A	91 MBH	PSC	19" x 20-3/16" x 42-3/4"	5"	\$2940.64

Residential Heating and Cooling Equipment

Thermo Pride Oil Furnaces

Thermo Pride High Boy Oil Furnace

- 85% AFUE
- Low profile design provides more installation flexibility
- Beckett AFG Burner
- Front Flue location
- Unique octagonal copper-coated steel heat exchanger
- Lifetime limited warranty on heat exchanger
- 10-year parts warranty
- Made in the USA



HVAC No.	MFG Part No.	Output MBH	Motor	Dimensions (W x D x H)	Vent Size	Price
465856	OH6FA072D48B-KIT	60 / 72 / 90 MBH	PSC	20" x 30" x 45"	5"	\$4474.48
465858	OH6FA072DV4B-KIT	60 / 72 / 90 MBH	ECM	20" x 30" x 45"	5"	\$5419.26
465865	OH8FA119D60B-KIT	101 / 120 / 132 MBH	PSC	24-1/2" x 35-1/2" x 50-5/8"	7"	\$5077.38
465866	OH8FA119DV5B-KIT	101 / 120 / 132 MBH	ECM	24-1/2" x 35-1/2" x 50-5/8"	7"	\$5934.40

Thermo Pride Low Boy Oil Furnace

- 85% AFUE
- Low profile design provides more installation flexibility
- Beckett AFG Burner
- Unique octagonal copper-coated steel heat exchanger
- Lifetime limited warranty on heat exchanger
- 10-year parts warranty
- Made in the USA



HVAC No.	MFG Part No.	Output MBH	Motor	Dimensions (W x D x H)	Flue Location	Vent Size	Price
465859	OL6FA072D48B-KIT	60 / 72 / 90 MBH	PSC	20" x 50" X 34-3/4"	Front	5"	\$4423.66
465860	OL6FA072DV5B-KIT	60 / 72 / 90 MBH	ECM	20" x 50" X 34-3/4"	Front	5"	\$5352.28
465861	OL6RA072D48B-KIT	60 / 72 / 90 MBH	PSC	20" x 50" x 34-3/4"	Rear	5"	\$4324.32
465862	OL6RA072DV5B-KIT	60 / 72 / 90 MBH	ECM	20" x 50" x 34-3/4"	Rear	5"	\$5250.64

Thermo Pride Counterflow / Horizontal Oil Furnaces

- 85% AFUE
- Beckett AFG Burner
- Unique octagonal copper-coated steel heat exchanger
- Lifetime limited warranty on heat exchanger
- 10-year parts warranty
- Made in the USA



HVAC No.	MFG Part No.	Output MBH	Motor	Dimensions (W x D x H)	Flue Location	Vent Size	Price
465863	OD6FA072D48B-KIT	60 / 72 / 90 MBH	PSC	20" x 30" x 45"	Front	5"	\$4578.42
465864	OD6RA072D48B-KIT	60 / 72 / 90 MBH	PSC	20" x 30" x 45"	Rear	5"	\$4555.32

Residential Heating and Cooling Equipment

UNICO Small Duct High Velocity System

Unico Fan Coils

- For use with M-series Unico Air Handlers and air distribution systems
- Can be used with any source of hot water, including oil, electric or gas boilers, solar systems or hydronic combi systems
- Coils are pressure-tested and leak tested at the factory for quality control
- Compact, modular coils fit into small spaces
- ½" tubes and full-collar fins provide greater tube-fin contact for excellent heat transfer



HVAC No.	MFG Part No.	Description	Price
413292	U1218L-1ST2EX	Fan Coil Unit, 1 - 1.5 Ton, With Heat Pump Coil	\$2871.68
413322	U1218L-1ST2CX	Fan Coil Unit, 1 - 1.5 Ton, With Chilled Water Coil	\$2580.36

Unico Modular Blowers

- For use with M-series Unico Air Handlers and air distribution systems
- Can be used with any source of hot water, including oil, electric or gas boilers, solar systems or hydronic combi systems
- Coils are pressure-tested and leak tested at the factory for quality control
- Compact, modular coils fit into small spaces
- ½" tubes and full-collar fins provide greater tube-fin contact for excellent heat transfer



HVAC No.	MFG Part No.	Description	Price
410453	M2430BL1-EC2	Blower Module, 2.0 - 2.5 Ton, EC Motor	\$2348.26
410454	M3642BL1-EC2	Blower Module, 3 - 3.5 Ton, EC Motor	\$2631.30
410455	M4860BL1-EC2	Blower Module, 4 - 5 Ton, EC Motor	\$2781.54
464774	M2430BL2-ST2	Blower Module, 2.0 - 2.5 Ton, Variable Speed	\$1502.08
464790	M3642BL2-ST2	Blower Module, 3 - 3.5 Ton, Variable Speed	\$1678.02
413313	M4860BL1-ST2	Blower Module, 4 - 5 Ton, Variable Speed	\$1978.70

Unico Cooling and Heat Pump Coils

- For use with M-series Unico Air Handlers and air distribution systems
- Can be used with any source of hot water, including oil, electric or gas boilers, solar systems or hydronic combi systems
- Coils are pressure-tested and leak tested at the factory for quality control
- Compact, modular coils fit into small spaces
- ½" tubes and full-collar fins provide greater tube-fin contact for excellent heat transfer



HVAC No.	MFG Part No.	Description	Price
413298	M2430CL1-B	Cooling Module, 2 - 2.5 Ton, Cooling Coil	\$1851.34
413299	M2430CL1-C	Cooling Module, 2 - 2.5 Ton, Chilled Water Coil	\$2049.60
413300	M2430CL1-E	Cooling Module, 2 - 2.5 Ton, Heat Pump Coil	\$2042.72
413302	M2430CL1-X	Heating Module, 2 - 2.5 Ton, Without Hot Water Coil	\$347.14
413306	M3642CL1-B	Cooling Module, 3 - 3.5 Ton, Cooling Coil	\$2314.82
413308	M3642CL1-E	Cooling Module, 3 - 3.5 Ton, Heat Pump Coil	\$2520.26
413310	M3642CL1-X	Heating Module 3 - 3.5 Ton, Without Hot Water Coil	\$415.46
413314	M4860CL1-B	Cooling Module, 4 - 4.5 Ton, Cooling Coil	\$3020.62
413316	M4860CL1-E	Cooling Module, 4 - 4.5 Ton, Heat Pump Coil	\$3245.34

Residential Heating and Cooling Equipment

UNICO Small Duct High Velocity System

Unico Cooling and Heat Pump Coils (Continued)

HVAC No.	MFG Part No.	Description	Price
413318	M4860CL1-X	Heating Module 4 - 4.5 Ton, Without Hot Water Coil	\$415.46

Unico Hot Water Coils

- For use with M-series Unico Air Handlers and air distribution systems
- Can be used with any source of hot water, including oil, electric or gas boilers, solar systems or hydronic combi systems
- Coils are pressure-tested and leak tested at the factory for quality control
- Compact, modular coils fit into small spaces
- ½" tubes and full-collar fins provide greater tube-fin contact for excellent heat transfer



HVAC No.	MFG Part No.	Description	Price
162248	HW-2430	Hot Water Coil, Fits M2430CL1-X	\$961.52
446272	HW-3642	Hot Water Coil, Fits M3642CL1-X	\$1294.72
459205	HW-4860	Hot Water Coil, Fits M4860CL1-X	\$1294.72

Installation Accessories for Unico System

- Use the right accessories for a clean, efficient installation

Return Grilles

- Includes throwaway filter, 2 duct bands and clips



HVAC No.	MFG Part No.	Description	Price
162299	UPC-01-1218	Return Grille, 14" x 20"	\$351.36
162300	UPC-01-2430	Return Grille, 14" x 25"	\$376.94
162301	UPC-01-3642	Return Grille, 14" x 30"	\$434.92
162302	UPC-01-4860	Return Grille, 24" x 30"	\$619.14

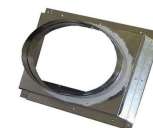
Return Air Duct

- Tough, aluminized outer mylar wrap
- Spun-bonded nylon and helical wire core
- 1" fiberglass insulation, R-4.2
- 10 ft lengths



HVAC No.	MFG Part No.	Description	Price
162295	UPC-04-1218	Return Air Duct, 12", for 1.5 Ton Systems	\$264.60
162296	UPC-04-2430	Return Air Duct, 14", for 2 - 2.5 Ton Systems	\$318.50
162297	UPC-04-3642	Return Air Duct, 18", for 3 - 3.5 Ton Systems	\$426.40
162298	UPC-04-4860	Return Air Duct, 20", for 4 - 5 Ton Systems	\$445.16

Return Air Adaptor



HVAC No.	MFG Part No.	Description	Price
162287	UPC-104-1218	Return Air Adaptor, M1218, fits 12" Duct	\$193.78

Residential Heating and Cooling Equipment

UNICO Small Duct High Velocity System

Installation Accessories for Unico System (Continued)

Return Air Adaptor

HVAC No.	MFG Part No.	Description	Price
162288	UPC-104-2430	Return Air Adaptor, MH2430, fits 14" Duct	\$322.14
162289	UPC-104-3642	Return Air Adaptor, MH3642, fits 18" Duct	\$368.40
162290	UPC-104-4860	Return Air Adaptor, MH4860, fits 20" Duct	\$368.40
162284	UPC-59-2430	Return Air Adaptor, MC2430, fits 14" Duct	\$193.78
162285	UPC-59-3642	Return Air Adaptor, MC3642, fits 18" Duct	\$238.50
162286	UPC-59-4860	Return Air Adaptor, MC4860, fits 20" Duct	\$264.60

Supply Air Adaptor



HVAC No.	MFG Part No.	Description	Price
162291	UPC-61-1218	Supply Air Adaptor, M1218, Fits 7" Duct	\$92.82
162292	UPC-61-2430	Supply Air Adaptor, M2430, Fits 7" Duct	\$92.82
162293	UPC-61-3642	Supply Air Adaptor, MB3642, Fits 9" Duct	\$99.30
162294	UPC-61-4860	Supply Air Adaptor, MB4860, Fits 10" Duct	\$95.34

Start Collars

HVAC No.	MFG Part No.	Description	Price
350075	UPC-62-1218	Start Collar, Square Duct, 8-1/2" ID	\$79.86
118811	UPC-62-2430	Start Collar, Square Duct, 8-1/2" ID	\$92.82
411698	UPC-62-3036	Start Collar, Square Duct, 10-1/2" ID	\$99.30
350076	UPC-62-3642	Start Collar, Square Duct, 10-1/2" ID	\$99.30
350077	UPC-62-4860	Start Collar, Square Duct, 11-1/2" ID	\$95.34

Twist-Fit™ Supply Air Tubing

- New Twist-Fit™ attachment system provides positive seal with a much faster and easier installation
- Couplings are factory-installed to the tubing
- Outlet face simply twist on and lock
- Tubing comes out of the box with a coupling pre-installed at each end
- Important Note: Always remember to add a section of sound attenuator duct to your supply air line



HVAC No.	MFG Part No.	Description	Price
468684	UPC-25T-1	Supply Tubing, 25' long, R3.3, Box Of One	\$310.00
468712	UPC-25T-4	Supply Tubing, 25' long, R3.3, Box Of Four	\$955.68
468686	UPC-25T-R4-1	Supply Tubing, 25' long, R4.2, Box Of One	\$370.00
468715	UPC-25T-R4-4	Supply Tubing, 25' long, R4.2, Box Of Four	\$1277.30
468687	UPC-25T-R6-1	Supply Tubing, 25' long, R6.0, Box Of One	\$439.28
468717	UPC-25T-R6-4	Supply Tubing, 25' long, R6.0, Box Of Four	\$1562.16
468688	UPC-25T-R8-1	Supply Tubing, 25' long, R8.0, Box Of One	\$488.10
468718	UPC-25T-R8-4	Supply Tubing, 25' long, R8.0, Box Of Four	\$1709.18

Residential Heating and Cooling Equipment

UNICO Small Duct High Velocity System

Twist-Fit™ Sound Attenuator Supply Tubing

- New Twist-Fit™ attachment system provides positive seal with a much faster and easier installation
- Couplings are factory-installed to the tubing
- Outlet face simply twist on and lock
- Tubing comes out of the box with a coupling pre-installed at each end
- Important Note: Always remember to add a section of sound attenuator duct to your supply air line



HVAC No.	MFG Part No.	Description	Price
468676	UPC-26TC-1	Sound Attenuator Tubing, 12' long, R3.3, Box Of One	\$199.04
468706	UPC-26TC-6	Sound Attenuator Tubing, 12' long, R3.3, Box Of Six	\$839.52
468677	UPC-26TCR4-1	Sound Attenuator Tubing, 12' long, R4.2, Box Of One	\$215.00
468709	UPC-26TCR4-6	Sound Attenuator Tubing, 12' long, R4.2, Box Of Six	\$907.86
468680	UPC-26TDR4-1	Sound Attenuator Tubing With Double Vapor Barrier, 12' long, R4.2, Box Of One	\$245.72
468713	UPC-26TDR4-6	Sound Attenuator Tubing With Double Vapor Barrier, 12' long, R4.2, Box Of Six	\$1010.82
468682	UPC-26TCR6-1	Sound Attenuator Tubing, 12' long, R6.0, Box Of One	\$286.66
468714	UPC-26TCR6-6	Sound Attenuator Tubing, 12' long, R6.0, Box Of Six	\$1240.54
468685	UPC-26TCR8-1	Sound Attenuator Tubing, 12' long, R8.0, Box Of One	\$320.00
468716	UPC-26TCR8-6	Sound Attenuator Tubing, 12' long, R8.0, Box Of Six	\$1442.70

Twist-Fit™ Takeoffs and Couplings

- Takeoffs allow Twist-Fit supply tubing to quickly and easily attach to trunk duct
- Couplings allow supply and sound attenuator tubing to attach in seconds, to extend supply air runs as needed



HVAC No.	MFG Part No.	Description	Price
468652	UPC-28TF-1	Takeoff For Flat Metal Plenum, Box Of One	\$60.00
468683	UPC-28TF-6	Takeoff For Flat Metal Plenum, Box Of Six	\$303.04
468651	UPC-28T-1	Takeoff For Round Metal Plenum, Box Of One	\$53.34
468681	UPC-28T-6	Takeoff For Round Metal Plenum, Box Of Six	\$270.28
468657	UPC-38TC-1	Coupling, Makes One Connection, Box Of One	\$122.22
468691	UPC-38TC-6	Coupling, Makes One Connection, Box Of Six	\$591.58

Twist-Fit™ Supply Outlets

- Outlet twists on to supply tubing.
- Installation is simple: (1) pull tubing slightly into room, (2) twist outlet onto tubing, (2) use screws to hold outlet to surface.
- Outlets are available in a range of materials and finishes to suit any installation



HVAC No.	MFG Part No.	Description	Price
468647	UPC-56TB-1	Outlet, White Plastic, Box Of One	\$24.24
468655	UPC-56TB-6	Outlet, White Plastic, Box Of Six	\$122.22
468648	UPC-56TB-BLK-1	Outlet, Black Plastic, Box Of One	\$24.24
468656	UPC-56TB-BLK-6	Outlet, Black Plastic, Box Of Six	\$122.22
468649	UPC-56TB-BRS-1	Outlet, Brass Finish, Box Of One	\$44.44
468678	UPC-56TB-BRS-6	Outlet, Brass Finish , Box Of Six	\$225.24
468650	UPC-56TB-CHR-1	Outlet, Chrome Finish, Box Of One	\$44.44
468679	UPC-56TB-CHR-6	Outlet, Chrome Finish , Box Of Six	\$225.24
468666	UPC-57T-B-1	Outlet, Birch Wood, Surface Mount, Box Of One	\$146.66
468701	UPC-57T-B-6	Outlet, Birch Wood, Surface Mount, Box Of Six	\$751.66

Residential Heating and Cooling Equipment

UNICO Small Duct High Velocity System

Installation Accessories for Unico System (Continued)

Twist-Fit™ Supply Outlets

HVAC No.	MFG Part No.	Description	Price
468667	UPC-57T-B-F-1	Outlet, Birch Wood, Flush Mount, Box Of One	\$146.66
468700	UPC-57T-B-F-6	Outlet, Birch Wood, Flush Mount, Box Of Six	\$751.66
468664	UPC-57T-C-1	Outlet, Cherry Wood, Surface Mount, Box Of One	\$129.90
468698	UPC-57T-C-6	Outlet, Cherry Wood, Surface Mount, Box Of Six	\$665.76
468665	UPC-57T-C-F-1	Outlet, Cherry Wood, Flush Mount, Box Of One	\$129.90
468699	UPC-57T-C-F-6	Outlet, Cherry Wood, Flush Mount, Box Of Six	\$665.76
468668	UPC-57T-K-1	Outlet, Knotty Pine Wood, Surface Mount, Box Of One	\$150.86
468703	UPC-57T-K-6	Outlet, Knotty Pine Wood, Surface Mount, Box Of Six	\$773.14
468669	UPC-57T-K-F-1	Outlet, Knotty Pine Wood, Flush Mount, Box Of One	\$150.86
468702	UPC-57T-K-F-6	Outlet, Knotty Pine Wood, Flush Mount, Box Of Six	\$773.14
468658	UPC-57T-MA-1	Outlet, Maple Wood, Surface Mount, Box Of One	\$125.72
468693	UPC-57T-MA-6	Outlet, Maple Wood, Surface Mount, Box Of Six	\$644.28
468659	UPC-57T-MA-F-1	Outlet, Maple Wood, Flush Mount, Box Of One	\$125.72
468697	UPC-57T-MA-F-6	Outlet, Maple Wood, Flush Mount, Box Of Six	\$644.28
468672	UPC-57T-MH-1	Outlet, Mahogany Wood, Surface Mount, Box Of One	\$167.62
468708	UPC-57T-MH-6	Outlet, Mahogany Wood, Surface Mount, Box Of Six	\$859.04
468673	UPC-57T-MH-F-1	Outlet, Mahogany Wood, Flush Mount, Box Of One	\$167.62
468707	UPC-57T-MH-F-6	Outlet, Mahogany Wood, Flush Mount, Box Of Six	\$859.04
468660	UPC-57T-PI-1	Outlet, Pine Wood, Surface Mount, Box Of One	\$125.72
468694	UPC-57T-PI-6	Outlet, Pine Wood, Surface Mount, Box Of Six	\$644.28
468661	UPC-57T-PI-F-1	Outlet, Pine Wood, Flush Mount, Box Of One	\$125.72
468695	UPC-57T-PI-F-6	Outlet, Pine Wood, Flush Mount, Box Of Six	\$644.28
468662	UPC-57T-PO-1	Outlet, Poplar Wood, Surface Mount, Box Of One	\$125.72
468696	UPC-57T-PO-6	Outlet, Poplar Wood, Surface Mount, Box Of Six	\$644.28
468663	UPC-57T-PO-F-1	Outlet, Poplar Wood, Flush Mount, Box Of One	\$125.72
468692	UPC-57T-PO-F-6	Outlet, Poplar Wood, Flush Mount, Box Of Six	\$644.28
468653	UPC-57T-RO-1	Outlet, Red Oak Wood, Surface Mount, Box Of One	\$106.66
468689	UPC-57T-RO-6	Outlet, Red Oak Wood, Surface Mount, Box Of Six	\$515.42
468654	UPC-57T-RO-F-1	Outlet, Red Oak Wood, Flush Mount, Box Of One	\$106.66
468690	UPC-57T-RO-F-6	Outlet, Red Oak Wood, Flush Mount, Box Of Six	\$515.42
468670	UPC-57T-WL-1	Outlet, Walnut Wood, Surface Mount, Box Of One	\$155.04
468704	UPC-57T-WL-6	Outlet, Walnut Wood, Surface Mount, Box Of Six	\$796.58
468671	UPC-57T-WL-F-1	Outlet, Walnut Wood, Flush Mount, Box Of One	\$155.04
468705	UPC-57T-WL-F-6	Outlet, Walnut Wood, Flush Mount, Box Of Six	\$796.58
468674	UPC-57T-WO-1	Outlet, White Oak Wood, Surface Mount, Box Of One	\$184.38
468711	UPC-57T-WO-6	Outlet, White Oak Wood, Surface Mount, Box Of Six	\$944.96
468675	UPC-57T-WO-F-1	Outlet, White Oak Wood, Flush Mount, Box Of One	\$184.38
468710	UPC-57T-WO-F-6	Outlet, White Oak Wood, Flush Mount, Box Of Six	\$944.96

Drain Pans



HVAC No.	MFG Part No.	Description	Price
130502	UPC-20B	Secondary Drain Pan for 2 Module 2430	\$212.42
130687	UPC-24B	Secondary Drain Pan for 2 Module 3036 and 3642	\$262.74

Residential Heating and Cooling Equipment

UNICO Small Duct High Velocity System

Installation Accessories for Unico System (Continued)

Drain Pans

HVAC No.	MFG Part No.	Description	Price
411695	UPC-24C	Secondary Drain Pan for 3 Module 3036 or 2 Module 4860	\$271.16

Tools

- The right tool makes the job go faster and better



HVAC No.	MFG Part No.	Description	Price
118801	UPC-54	Clamp Pliers	\$131.56
118802	UPC-55-5	2" Hole Cutter	\$38.82

Adaptors, Collars, and Kits

HVAC No.	MFG Part No.	Description	Price
118810	UPC-61	Start Collar for 2-5 Ton Air Handler	\$90.66
118811	UPC-62-2430	Start Collar, Square Duct	\$92.82
350076	UPC-62-3642	Start Collar, Square Duct	\$99.30
350077	UPC-62-4860	Start Collar, Square Duct	\$95.34
136683	UPC-63A	Vertical Conversion Kit, M2430/M2436	\$347.94
118812	UPC-63	Vertical Conversion Kit, M2436	\$64.76
118813	UPC-64	Vertical Conversion Kit, M4260	\$75.54
118816	UPC-80F-1	Fiberglass Plenum Single Installation Kit	\$227.32
118817	UPC-80M-1	Metal Plenum Single Installation Kit	\$227.32
355693	UPC-89F-6A	Fiberglass Plenum Bulk Installation Kit	\$453.68
118823	UPC-89M-6	Metal Plenum Bulk Installation Kit	\$453.68

Residential Heating and Cooling Equipment

Amana PTAC Equipment

Amana PTAC

- Up to 11.7 EER with a 3.5 COP
- Equipped with DigiSmart™ control to manage through the DigiSmart Wireless Energy Management System
- Fits standard wall sleeve
- Pull-out filter for easy cleaning
- New, quiet indoor tangential fan
- 5 Year Parts limited warranty
- Assembled in the USA



HVAC No.	MFG Part No.	Description	Voltage	Elect Heat kW	Price
423270	PTH073G35A*	Heat Pump, R-410A, With Digismart, 7 MBH	208-230/1/60	3.5 KW	\$1491.44
423273	PTH093G35A*	Heat Pump, R-410A, With Digismart, 9 MBH	208-230/1/60	3.5 KW	\$1563.44
423276	PTH123G35A*	Heat Pump, R-410A, With Digismart, 12 MBH	208-230/1/60	3.5 KW	\$1650.08
423282	PTH153G50A*	Heat Pump, R-410A, With Digismart, 14 MBH	208-230/1/60	5 KW	\$1745.08

Installation Accessories for Amana PTAC Equipment

HVAC No.	MFG Part No.	Description	Price
363944	PWHK01C	Wiring Harness Kit	\$39.20
391776	WS900E	Insulated Wall Sleeve, 42"W x 16-1/16"H x 14-1/8"D	\$198.82
413976	2246007	Digital Thermostat	\$189.72
355866	PTSB320E	Sub-Base	\$177.22
22580	AGK01CB	Architectural Wall Grille, Anodized Finish	\$195.40
22936	SGK01B	Stamped Wall Grille	\$66.24
22700	DK900D	Drain Kit	\$23.42
465834	DS01G	DigiSmart Digital Thermostat	\$305.84
446484	DT01G	Digitenna Wireless RF Gateway	\$183.28
350194	REK10B	Remote Stat Escutcheon Kit, Pack of 10	\$215.36

Residential Heating and Cooling Equipment

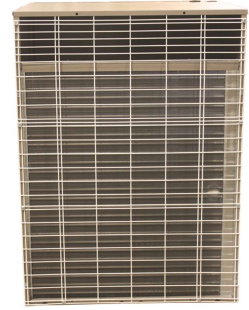
National Comfort Products Through-The-Wall Units

1000 and 3000 Series Overview

- Through the wall heating & cooling for multi-family construction
- Self-contained heating & cooling units
- Easy, reachable access ports
- 16"x25" non-washable filter included
- Cooling system includes secondary drain connection
- Architectural grille sold separately
- Precharged & prewired
- 5 Year parts warranty
- 5 year compressor warranty
- Made in the USA



1000 Series



3000 Series

1000 Series Condensing Unit

- 1000 Series units are 26-1/2"W x 28-5/8"H x 18-1/2"D
- 1000 Series is cooling only

HVAC No.	MFG Part No.	Tons A/C	SEER	Dimensions (W x H x D)	Price
392264	NCPE-418-1010	1.5T	12	26-1/4" x 28-5/8" x 18-1/2"	\$2339.04
392265	NCPE-424-1010	2T	12	26-1/4" x 28-5/8" x 18-1/2"	\$2531.40
396608	NCPE-430-1010	2.5T	12	26-1/4" x 28-5/8" x 18-1/2"	\$2618.80

Installation Accessories for 1000 Series Condensing Unit

HVAC No.	MFG Part No.	Description	Price
396613	1000-WSD-12	Wall Sleeve for 1000 Series, 26-7/8"W x 29"H x 12-3/8"D	\$175.56
422903	14269035	Architectural Grille for 1000 Series, Anodized Finish	\$280.24

3000 Series Condensing Units

- Up to 13 SEER, depending on match
- Heavy duty water-resistant cabinet

HVAC No.	MFG Part No.	Tons A/C	SEER	Dimensions (W x H x D)	Price
393076	NCPE-418-3010	1.5T	Up to 13	24-1/8" x 32" x 18-1/2"	\$2398.62
391652	NCPE-424-3010	2T	Up to 13	24-1/8" x 32" x 18-1/2"	\$2531.40
411943	NCPE-430-3010	2.5T	Up to 13	24-1/8" x 32" x 18-1/2"	\$2651.74

3000 Series Heat Pumps

- 12 SEER
- 7.4 HSPF
- Heavy duty water-resistant cabinet

HVAC No.	MFG Part No.	Clg Cap	Htg Cap	Dimensions (W x H x D)	Price
456248	NHPA-418-3019	1.5T	1.5T	24-1/8" x 32" x 18-1/2"	\$3070.80
456249	NHPA-424-3019	2.0T	2.0T	24-1/8" x 32" x 18-1/2"	\$3198.76

Installation Accessories for 3000 Series Condensing Units and Heat Pumps

HVAC No.	MFG Part No.	Description	Price
461000	14269036	Architectural Grille for 3000 Sries, Anodized Finish	\$287.26
396614	3000-WSD-12	Wall Sleeve for 3000 Series, 24-1/8" x 32" x 18-1/2"	\$174.42

Residential Heating and Cooling Equipment

National Comfort Products Through-The-Wall Units

Comfort Pack Electric Heat, Electric Cool

- Through the wall heating & cooling for multi-family construction
- Self-contained heating & cooling units
- Easy, reachable access ports
- 16"x25" non-washable filter included
- Cooling system includes secondary drain connection
- Architectural grille sold separately
- Precharged & prewired
- 5 Year parts warranty
- 5 year compressor warranty
- Made in the USA



HVAC No.	MFG Part No.	Clg Cap	Htg Cap	Dimensions (W x H x D)	Price
466997	CPE41105-U	1T	5kW	208-230/60/1	\$3885.96
466998	CPE41107-U	1T	7.5kW	208-230/60/1	\$3922.20
466999	CPE41110-U	1T	10kW	208-230/60/1	\$3957.72
467001	CPE41707-U	1.5T	7.5kW	208-230/60/1	\$4164.78
467002	CPE41710-U	1.5T	10kW	208-230/60/1	\$4152.98
467003	CPE41715-U	1.5T	15kW	208-230/60/1	\$4284.52
467004	CPE42305-U	2T	5kW	208-230/60/1	\$4411.46
467005	CPE42307-U	2T	7.5kW	208-230/60/1	\$4490.02
467006	CPE42310-U	2T	10kW	208-230/60/1	\$4473.68
467007	CPE42315-U	2T	15kW	208-230/60/1	\$4594.20

Installation Accessories for Comfort Pack CPE Models

HVAC No.	MFG Part No.	Description	Price
396633	CPWS	Wall Sleeve for CPE Models	\$214.58
396636	CPLG	Architectural Grille for CPE Models	\$552.46

Comfort Pack Gas Heat (80%), Electric Cool

- Through the wall heating & cooling for multi-family construction
- Self-contained heating & cooling units
- Easy, reachable access ports
- 16"x25" non-washable filter included
- Cooling system includes secondary drain connection
- Architectural grille sold separately
- Precharged & prewired
- 5 Year parts warranty
- 5 year compressor warranty
- Made in the USA



HVAC No.	MFG Part No.	Clg Cap	Htg Cap	Power	Efficiency	Price
466920	CPG41138-U	1T	38 MBH	208-230/60/1	80%	\$4862.00
466921	CPG41738-U	1.5T	38 MBH	208-230/60/1	80%	\$5008.12
467010	CPG41751-U	1.5T	51 MBH	208-230/60/1	80%	\$5077.46
467011	CPG41764-U	1.5T	64 MBH	208-230/60/1	80%	\$5212.12
467013	CPG42338-U	2T	38 MBH	208-230/60/1	80%	\$5331.62
466922	CPG42351-U	2T	51 MBH	208-230/60/1	80%	\$5403.80
467014	CPG42364-U	2T	64 MBH	208-230/60/1	80%	\$5547.88

Residential Heating and Cooling Equipment

National Comfort Products Through-The-Wall Units

Installation Accessories for Comfort Pack CPG Models

HVAC No.	MFG Part No.	Description	Price
396633	CPWS	Wall Sleeve for CPG Models	\$214.58
396636	CPLG	Architectural Grille for CPG Models	\$552.46

Comfort Pack Gas Heat (95%), Electric Cool

- Through the wall heating & cooling for multi-family construction
- Self-contained heating & cooling units
- Easy, reachable access ports
- 16"x25" non-washable filter included
- Cooling system includes secondary drain connection
- Architectural grille sold separately
- Precharged & prewired
- 5 Year parts warranty
- 5 year compressor warranty
- Made in the USA



HVAC No.	MFG Part No.	Clg Cap	Htg Cap	Power	Efficiency	Price
467015	CPG41125-U	1T	25 MBH	208-230/1	95%	\$5575.10
467016	CPG41132-U	1T	32 MBH	208-230/1	95%	\$5603.82
467017	CPG41725-U	1.5T	25 MBH	208-230/1	95%	\$5718.84
467018	CPG41732-U	1.5T	32 MBH	208-230/1	95%	\$5756.40
467019	CPG41743-U	1.5T	43 MBH	208-230/1	95%	\$5826.70
467020	CPG41750-U	1.5T	50 MBH	208-230/1	95%	\$5890.38
467021	CPG42325-U	2T	25 MBH	208-230/1	95%	\$6076.66
467022	CPG42332-U	2T	32 MBH	208-230/1	95%	\$6097.34
467023	CPG42343-U	2T	43 MBH	208-230/1	95%	\$6208.78
467024	CPG42350-U	2T	50 MBH	208-230/1	95%	\$6240.62

Installation Accessories for Comfort Pack CPG Models

HVAC No.	MFG Part No.	Description	Price
396633	CPWS	Wall Sleeve for CPG Models	\$214.58
396636	CPLG	Architectural Grille for CPG Models	\$552.46