

## VENTILATION

### Jenco

#### SDB Series Downblast Roof Belt Drive Centrifugal Exhaust Fans

- Exhaust air up to 4,984 CFM in high static pressure applications up to 1-1/2" w.g.
- Attractive spun aluminum exterior
- Direct drive units have low sound levels and quiet operation
- Curved non-overloading backward inclined wheel for efficiency at higher static pressures
- Suitable for either ducted or non-ducted applications
- AMCA Air and Sound Licensed
- cULus 705 Listed
- Other sizes/configurations available.



##### Single Phase Motor

HVAC No.	MFG Part No.	Voltage	Max HP	Airflow Range	Max Static Press	Price
469578	SDB06MH1S	115/1/60 Volts	1/4 Hp	41 to 375 CFM	Max SP 7/8"	\$1050.00
469579	SDB07MH1S	115/1/60 Volts	1/4 Hp	44 to 547 CFM	Max SP 7/8"	\$1050.00
469580	SDB08PH1S	115/1/60 Volts	1/3 Hp	194 to 1,132 CFM	Max SP 1"	\$1051.50
469590	SDB10PH1S	115/1/60 Volts	1/3 Hp	244 to 1,422 CFM	Max SP 1"	\$1237.50
469596	SDB12QH1S	115/1/60 Volts	1/2 Hp	425 to 1,870 CFM	Max SP 1-1/4"	\$1345.50
469604	SDB14SH1S	115/208-230V Tri Voltage	1 Hp	802 to 3,525 CFM	Max SP 1-1/2"	\$1501.64
469607	SDB15SH1S	115/208-230V Tri Voltage	1 Hp	543 to 3,724 CFM	Max SP 1-1/2"	\$1546.20
469613	SDB16SH1S	115/208-230V Tri Voltage	1 Hp	1,275 to 4,135 CFM	Max SP 1-1/2"	\$1712.54
469634	SDB18VH1S	115/208-230V Tri Voltage	2 Hp	1,389 to 5,787 CFM	Max SP 1-3/4"	\$2180.42
469637	SDB20VH1S	115/208-230V Tri Voltage	2 Hp	1,728 to 6,259 CFM	Max SP 1-3/4"	\$2272.50
469640	SDB22VH1S	115/208-230V Tri Voltage	2 Hp	2,522 to 8,098 CFM	Max SP 1"	\$2418.06

##### Three Phase Motor

HVAC No.	MFG Part No.	Voltage	Max HP	Airflow Range	Max Static Press	Price
469584	SDB06MH3S	208/230/460 Volts	1/4 Hp	41 to 375 CFM	Max SP 7/8"	\$1210.50
469586	SDB07MH3S	208/230/460 Volts	1/4 Hp	44 to 547 CFM	Max SP 7/8"	\$1218.00
469585	SDB08PH3S	208/230/460 Volts	1/3 Hp	194 to 1,132 CFM	Max SP 1"	\$1212.00
469593	SDB10PH3S	208/230/460 Volts	1/3 Hp	244 to 1,422 CFM	Max SP 1"	\$1291.50
469599	SDB12QH3S	208/230/460 Volts	1/2 Hp	425 to 1,870 CFM	Max SP 1-1/4"	\$1413.00
469602	SDB14SH3S	208/230/460 Volts	1 Hp	802 to 3,525 CFM	Max SP 1-1/2"	\$1468.50
469603	SDB15SH3S	208/230/460 Volts	1 Hp	543 to 3,724 CFM	Max SP 1-1/2"	\$1500.14
469609	SDB16SH3S	208/230/460 Volts	1 Hp	1,275 to 4,135 CFM	Max SP 1-1/2"	\$1599.66
469624	SDB18VH3S	208/230/460 Volts	2 Hp	1,389 to 5,787 CFM	Max SP 1-3/4"	\$1874.44
469627	SDB20VH3S	208/230/460 Volts	2 Hp	1,728 to 6,259 CFM	Max SP 1-3/4"	\$1933.86
469629	SDB22VH3S	208/230/460 Volts	2 Hp	2,522 to 8,098 CFM	Max SP 1"	\$2070.50
469641	SDB24VH3S	208/230/460 Volts	2 Hp	2,503 to 9,287 CFM	Max SP 1-1/4"	\$2520.54

#### Accessories for SDB Series Exhaust Fans

##### Roof Curbs

HVAC No.	MFG Part No.	Description	Price
451083	711216	Roof Mounting Curb 12" High fits size 6-10"	\$272.34
462438	711218	Roof Mounting Curb 12" High fits size 12, 14"	\$312.16
469534	711222	Roof Mounting Curb 12" High fits size 15, 16"	\$419.32
466933	711228	Roof Mounting Curb 12" High fits size 18-22"	\$431.74
466932	711234	Roof Mounting Curb 12" High fits size 24"	\$470.56

## VENTILATION

### Jenco

#### Gravity Dampers

HVAC No.	MFG Part No.	Description	Price
385651	411012	Gravity Damper fits size 6-10	\$70.84
385652	411014	Gravity Damper fits size 12, 14	\$91.36
385652	411018	Gravity Damper fits size 15, 16	\$91.36
385674	411024	Gravity Damper fits size 18-22	\$162.20
385699	411030	Gravity Damper fits size 24	\$176.38

#### LPD Series Low Profile Direct Drive Centrifugal Roof/Sidewall Exhaust Fan

- Designed for exhaust air applications with low airflow (up to 420 CFM) and high static pressure (Up to 1-3/4")
- Low profile design well suited when aesthetics require less visibility
- Can be roof or wall mounted
- Designed for curb mounting



HVAC No.	MFG Part No.	Voltage	Watts	Airflow Range	Max Static Press	Price
385866	LPD061AS	115/1/60	90Wwatts	52 to 302 CFM	1-1/2" Max SP	\$560.64
385885	LPD081AS	115/1/60 volts	115Wwatts	52 to 423 CFM	1-3/4" Max SP	\$636.74

#### Accessories for LPD Series Low Profile Exhaust Fan

##### Roof Curbs

HVAC No.	MFG Part No.	Description	Price
385698	611214	Roof Mounting Curb 12" High fits size 8	\$298.60

#### SDBD Series Downblast Direct Drive Centrifugal Roof Exhaust Fans

- Exhaust air up to 28,000 CFM
- High static pressure applications up to 1-1/4" w.g.
- Attractive spun aluminum exterior
- Belt drives permit easy performance adjustments when needed
- Non-overloading backward inclined wheel for efficiency at higher static pressures
- AMCA Air and Sound Licensed
- cULus 705 Listed



##### Single Phase 115V Motor

HVAC No.	MFG Part No.	Voltage	Max HP	Airflow Range	Max Static Press	Price
469546	SDBD06JH1AS	115/1/60 Volts	1/10 Hp	53 to 351 CFM	3/4" Max SP	\$546.66
469548	SDBD07JH1AS	115/1/60 Volts	1/10 Hp	79 to 476 CFM	3/4" Max SP	\$579.28
469557	SDBD08MH1AS	115/1/60 Volts	1/4 Hp	187 to 892 CFM	7/8" Max SP	\$753.22
469563	SDBD10PH1AS	115/1/60 Volts	1/3 Hp	398 to 1,348 CFM	1" Max SP	\$831.00
469575	SDBD12QH1AS	115/1/60 Volts	1/2 Hp	479 to 1,885 CFM	1-1/4" Max SP	\$1024.50
469571	SDBD14MM1AS	115/1/60 Volts	1/4 Hp	858 to 3,507 CFM	5/8" Max SP	\$978.00
469587	SDBD15QM1AS	115/1/60 Volts	1/2 Hp	779 to 4,083 CFM	7/8" Max SP	\$1227.00
469591	SDBD16QM1AS	115/1/60 Volts	1/2 Hp	1,317 to 4,984 CFM	7/8" Max SP	\$1281.00

## VENTILATION

### Jenco

#### Single Phase 230V Motor

HVAC No.	MFG Part No.	Voltage	Max HP	Airflow Range	Max Static Press	Price
469547	SDBD06JH1CS	230/1/60 Volts	1/10 Hp	53 to 351 CFM	3/4" Max SP	\$546.66
469549	SDBD07JH1CS	230/1/60 Volts	1/10 Hp	79 to 476 CFM	3/4" Max SP	\$579.28
469558	SDBD08MH1CS	230/1/60 Volts	1/4 Hp	187 to 892 CFM	7/8" Max SP	\$753.22
469564	SDBD10PH1CS	230/1/60 Volts	1/3 Hp	398 to 1,348 CFM	1" Max SP	\$831.00
469576	SDBD12QH1CS	230/1/60 Volts	1/2 Hp	479 to 1,885 CFM	1-1/4" Max SP	\$1024.50
469572	SDBD14MM1CS	230/1/60 Volts	1/4 Hp	858 to 3,507 CFM	5/8" Max SP	\$978.00
469588	SDBD15QM1CS	230/1/60 Volts	1/2 Hp	779 to 4,083 CFM	7/8" Max SP	\$1227.00
469592	SDBD16QM1CS	230/1/60 Volts	1/2 Hp	1,317 to 4,984 CFM	7/8" Max SP	\$1281.00

#### Accessories for SDBD Series Downblast Exhaust Fans

##### Roof Curbs

HVAC No.	MFG Part No.	Description	Price
451083	711216	Roof Mounting Curb 12" High fits size 6, 7, 8, 10	\$272.34
462438	711218	Roof Mounting Curb 12" High fits size 12, 14	\$312.16
469534	711222	Roof Mounting Curb 12" High fits size 15, 16	\$419.32

#### STXB-UL762 Upblast Belt Drive Centrifugal Roof Exhaust Fans

- Exhaust air up to 3,400 CFM
- High static pressure applications up to 1-1/4" w.g.
- Attractive spun aluminum exterior
- Direct drive units have low sound levels and quiet operation
- Non-overloading backward inclined wheel for efficiency at higher static pressures
- Roof or sidewall mounting options
- AMCA Air and Sound Licensed
- cULus 705 or 762 Listed



##### Single Phase Motor

HVAC No.	MFG Part No.	Airflow Range	Max Static Press	Max Motor HP	Voltage	Price
469600	STXB08RHULPH1S	201 to 1,128 CFM	1"	1/3	115V	\$1426.50
469601	STXB10RHULPH1S	348 to 1,468 CFM	1"	1/3	115V	\$1458.00
469606	STXB12RHULQH1S	318 to 1,989 CFM	1-1/4"	1/2	115V	\$1517.98
469611	STXB14RHULSH1S	808 to 3,334 CFM	1-1/2"	1	115/208/230V	\$1639.76
469626	STXB15RHULRH1S	439 to 3,684 CFM	2-1/2"	1	115/208/230V	\$1929.40
469630	STXB16RHULRH1S	603 to 3,975 CFM	2-1/4"	1	115/208/230V	\$2091.30
469639	STXB18RHULVH1S	1,297 to 5,589 CFM	2-3/4"	2	115/208/230V	\$2397.26
469644	STXB20RHULVH1S	1,305 to 6,552 CFM	2-1/2"	2	115/208/230V	\$2872.56
469647	STXB22RHULVH1S	3,355 to 8,624 CFM	1-1/4"	2	115/208/230V	\$2957.22

##### Three-Phase Motor

HVAC No.	MFG Part No.	Airflow Range	Max Static Press	Max Motor HP	Voltage	Price
469608	STXB08RHULPH3S	201 to 1,128 CFM	1"	1/3	208/230/460V	\$1577.38
469605	STXB10RHULPH3S	348 to 1,468 CFM	1"	1/3	208/230/460V	\$1501.64
469610	STXB12RHULQH3S	318 to 1,989 CFM	1-1/4"	1/2	208/230/460V	\$1616.00
469612	STXB14RHULSH3S	808 to 3,334 CFM	1-1/2"	1	208/230/460V	\$1696.20
469622	STXB15RHULRH3S	439 to 3,684 CFM	2-1/2"	1	208/230/460V	\$1819.48

## VENTILATION

### Jenco

#### STXB-UL762 Upblast Belt Drive Centrifugal Roof Exhaust Fans (Continued)

##### Three-Phase Motor

HVAC No.	MFG Part No.	Airflow Range	Max Static Press	Max Motor HP	Voltage	Price
469633	STXB16RHULRH3S	603 to 3,975 CFM	2-1/4"	1	208/230/460V	\$2150.70
469638	STXB18RHULVH3S	1,297 to 5,589 CFM	2-3/4"	2	208/230/460V	\$2327.46
469642	STXB20RHULVH3S	1,305 to 6,552 CFM	2-1/2"	2	208/230/460V	\$2649.76
469643	STXB22RHULVH3S	3,355 to 8,624 CFM	1-1/4"	2	208/230/460V	\$2729.98
469648	STXB24RHULVH3S	2,574 to 8,974 CFM	1-1/4"	2	208/230/460V	\$2997.78

#### Accessories for STXB-UL762 Upblast Roof Exhaust Fans

##### Vented Restaurant-Style Roof Curb

- 18" High
- 18" is the minimum required for kitchen/grease removal applications, per NFPA96 code

HVAC No.	MFG Part No.	Description	Price
469529	721816V	Fits Size 8, 10	\$406.90
469530	721818V	Fits Size 12, 14	\$410.00
469535	721822V	Fits Size 15, 16	\$419.32
469541	721828V	Fits Size 18, 20, 22	\$535.80
469550	721834V	Fits Size 24	\$594.82

##### Metal Grease Box

HVAC No.	MFG Part No.	Description	Price
385671	90005891-A	Fits Sizes 8, 10, 12, 14, 15, 16	\$184.58
385672	90005891-B	Fits Sizes 18, 20, 22	\$184.58

#### STXD-UL762 Series Upblast Direct Drive Roof/Sidewall Exhaust Fan

- Designed to exhaust air up to 4,780 CFM, with high static pressure capability up to 1-1/2"
- Backward inclined wheel makes this suitable for either ducted or non-ducted applications
- Can be roof or wall mounted
- Well suited to short duct runs
- Direct drive design uses smaller diameter wheels with lower RPMs, for quiet operation
- UL762 Listed

##### Single Phase Motor

HVAC No.	MFG Part No.	Airflow Range	Max Static Press	Max Motor HP	Voltage	Price
455693	STXD10RHULPH1AS	322 to 1,445 CFM	1"	1/3	115V	\$1696.20
469615	STXD12RHULQH1AS	470 to 1,918 CFM	1-1/4"	1/2	115V	\$1730.36
469620	STXD14RHULMM1AS	868 to 2,148 CFM	5/8"	1/4	115V	\$1780.86
469621	STXD15RHULQM1AS	800 to 2,643 CFM	7/8"	1/2	115V	\$1789.78
469625	STXD16RHULQM1AS	1,272 to 3,187 CFM	7/8"	1/2	115V	\$1910.08



## VENTILATION

### Jenco

#### Three-Phase Motor

HVAC No.	MFG Part No.	Airflow Range	Max Static Press	Max Motor HP	Voltage	Price
469614	STXD10RHULPH1CS	322 to 1,445 CFM	1"	1/3	230V	\$1719.98
469616	STXD12RHULQH1CS	470 to 1,918 CFM	1-1/4"	1/2	230V	\$1760.08
469619	STXD14RHULMM1CS	868 to 2,148 CFM	5/8"	1/4	230V	\$1770.48
469623	STXD15RHULQM1CS	800 to 2,643 CFM	7/8"	1/2	230V	\$1822.46
469628	STXD16RHULQM1CS	1,272 to 3,187 CFM	7/8"	1/2	230V	\$1947.22

#### UBS Series Upblast Belt Drive Propeller Roof Exhaust Fans

- Exhaust air up to 51,000 CFM in static pressure applications up to 1/2" w.g.
- Straight-through air flow design results in maximum exhaust efficiency
- Belt drives permit easy performance adjustments when needed
- cULus 705 Listed



HVAC No.	MFG Part No.	Motor	Air Flow at Static Pressure	Price
386479	UBS30SH1S	1 HP	7865 CFM @ 1/4-IN S.P.	\$2493.94
386559	UBS36SH1S	1 HP	8064 CFM @ 1/4-IN S.P.	\$2738.34
386654	UBS42TH1S	1-1/2 HP	11400 CFM @ 1/4-IN S.P.	\$3179.72
386710	UBS48VH1S	2 HP	16506 CFM @ 1/4-IN S.P.	\$3522.22
386747	UBS54WH3S	3 HP	20962 CFM @ 1/4-IN S.P.	\$4690.18
386768	UBS60XH3S	5 HP	36545 CFM @ 1/4-IN S.P.	\$5189.82

#### RCXII Series Gravity Relief Ventilators

- Exhaust or Supply air up to 10,400 CFM
- Static pressure applications up to .35" w.g.
- All heavy-gauge aluminum construction
- Integral galvanized birdscreen
- Curb mounted



HVAC No.	MFG Part No.	Air Flow Range	Max Static Pressure	Price
451846	RCXII06S	90 to 346	0.35"	\$208.28
385786	RCXII08S	221 to 827	0.35"	\$223.40
385797	RCXII10S	297 to 111	10.35"	\$272.34
385810	RCXII12S	493 to 1845	0.35"	\$295.32
410199	RCXII14S	604 to 2258	0.35"	\$372.72
392503	RCXII16S	746 to 2791	0.35"	\$374.28
385872	RCXII18S	919 to 3439	0.35"	\$469.02
385881	RCXII20S	1127 to 4215	0.35"	\$528.04
385987	RCXII24S	1535 to 4851	0.3"	\$1041.00
386010	RCXII26S	1716 to 5454	0.3"	\$1137.00
386155	RCXII30S	2399 to 7585	0.3"	\$1218.00
386156	RCXII33S	2762 to 8732	0.3"	\$1700.68
386377	RCXII36S	3283 to 10378	0.3"	\$1797.20

## VENTILATION

### Jenco

#### Accessories for RCXII Gravity Relief Vents

##### Roof Mounting Curbs

- Galvanized, includes wood nailer, insulation, damper shelf, and mitered 3" cantilever

HVAC No.	MFG Part No.	Description	Price
385698	611214	Roof Mounting Curb (12" High) Fits Sizes 6, 8	\$298.60
385721	611222	Roof Mounting Curb (12" High) Fits Sizes 10, 12, 14, 16	\$337.00
385801	611227	Roof Mounting Curb (12" High) Fits Sizes 18, 20	\$458.14
385836	611233	Roof Mounting Curb (12" High) Fits Sizes 24, 26	\$496.96
385869	611240	Roof Mounting Curb (12" High) Fits Sizes 30, 33, 36	\$546.66

##### Gravity Exhaust Dampers

- Includes a field assembled counterbalance kit

HVAC No.	MFG Part No.	Description	Price
385689	2401.0808U	Gravity Exhaust Damper Fits Sizes 6, 8	\$211.64
385695	2401.1515U	Gravity Exhaust Damper Fits Sizes 10, 12, 14, 16	\$272.34
385788	2401.2121U	Gravity Exhaust Damper Fits Sizes 18, 20	\$323.04
385834	2401.2727U	Gravity Exhaust Damper Fits Sizes 24, 26	\$372.72
385875	2401.3434U	Gravity Exhaust Damper Fits Sizes 30, 33, 36	\$442.62

##### Motorized Exhaust Dampers

- Damper motor/actuator kits are 115/1

HVAC No.	MFG Part No.	Description	Price
385812	2401.M0808U	Motorized Exhaust Damper Fits Sizes 6, 8	\$442.62
385821	2401.M1515U	Motorized Exhaust Damper Fits Sizes 10, 12, 14, 16	\$535.80
385841	2401.M2121U	Motorized Exhaust Damper Fits Sizes 18, 20	\$577.72
385857	2401.M2727U	Motorized Exhaust Damper Fits Sizes 24, 26	\$619.66
385886	2401.M3434U	Motorized Exhaust Damper Fits Sizes 30, 33, 36	\$717.50

##### Gravity Supply Dampers

- Includes a field assembled counterbalance kit

HVAC No.	MFG Part No.	Description	Price
469499	2401.0808D	Gravity Supply Damper Fits Sizes 6, 8	\$211.64
469512	2401.1515D	Gravity Supply Damper Fits Sizes 10, 12, 14, 16	\$272.34
469520	2401.2121D	Gravity Supply Damper Fits Sizes 18, 20	\$323.04
469522	2401.2727D	Gravity Supply Damper Fits Sizes 24, 26	\$372.72
469537	2401.3434D	Gravity Supply Damper Fits Sizes 30, 33, 36	\$442.62

##### Motorized Supply Dampers

- Damper motor/actuator kits are 115/1

HVAC No.	MFG Part No.	Description	Price
469538	2401.M0808D	Motorized Supply Damper Fits Sizes 6, 8	\$465.90
469540	2401.M1515D	Motorized Supply Damper Fits Sizes 10, 12, 14, 16	\$529.58
469555	2401.M2121D	Motorized Supply Damper Fits Sizes 18, 20	\$618.10
469556	2401.M2727D	Motorized Supply Damper Fits Sizes 24, 26	\$655.38
469559	2401.M3434D	Motorized Supply Damper Fits Sizes 30, 33, 36	\$764.10

## VENTILATION

### Jenco

#### RCXII Series Self-Flashing Gravity Relief Ventilators

- Exhaust or Supply air up to 10,400 CFM
- Static pressure applications up to .35" w.g.
- All heavy-gauge aluminum construction
- Integral galvanized birdscreen
- Self-flashing included



HVAC No.	MFG Part No.	Airflow Range	Max Static Pressure	Price
469498	RCXII06SFS	90 to 346 CFM	0.35"	\$204.92
385787	RCXII08SFS	221 to 827 CFM	0.35"	\$220.04
385798	RCXII10SFS	297 to 1111 CFM	0.35"	\$269.06
385811	RCXII12SFS	493 to 1845 CFM	0.35"	\$290.40
469521	RCXII14SFS	604 to 2258 CFM	0.35"	\$371.18
392502	RCXII16SFS	746 to 2791 CFM	0.35"	\$372.72
385873	RCXII18SFS	919 to 3439 CFM	0.35"	\$467.46
385882	RCXII20SFS	1127 to 4215 CFM	0.35"	\$526.48

#### Gravity Dampers

- Used with roof exhaust fans for supply or return configurations
- Available in aluminum or galvanized construction



HVAC No.	MFG Part No.	Size	Price
385645	411011	11" Square x 2" Height	\$70.84
385651	411012	12" Square x 2" Height	\$70.84
385652	411014	14" Square x 2" Height	\$91.36
385660	411016	16" Square x 2" Height	\$93.22
385659	411018	18" Square x 2" Height	\$100.68
385661	411020	20" Square x 2" Height	\$124.92
385675	411022	22" Square x 2" Height	\$145.42
385674	411024	24" Square x 2" Height	\$162.20
385701	411028	28" Square x 2" Height	\$171.34
385699	411030	30" Square x 2" Height	\$176.38

#### GED Series Sidewall Direct Drive Propeller Fans

- Sidewall mounting with various accessories
- 10" - 20" sizes
- 300-3,500 CFM up to ¾" wg static
- Wall housings, wall collars, dampers and guards available



HVAC No.	MFG Part No.	Voltage	Max HP	Airflow Range	Max Static Press	Price
385878	GED10JH1AS	115/1/60	1/10 HP	227 to 782 CFM	1/4" Max SP	\$636.74
385908	GED12MH1AS	115/1/60	1/4 HP	544 to 1525 CFM	1/2" Max SP	\$701.96
385920	GED14QH1AS	115/1/60	1/2 HP	581 to 2546 CFM	5/8" Max SP	\$819.00
385964	GED16PH1AS	115/1/60	1/3 HP	889 to 2676 CFM	5/8" Max SP	\$915.00
385958	GED18QH1AS	115/1/60	1/2 HP	902 to 2983 CFM	5/8" Max SP	\$961.50
385965	GED20QH1AS	115/1/60	1/2 HP	2112 to 3885 CFM	1/2" Max SP	\$973.50



## VENTILATION

### Jenco

#### Accessories for GED Series Sidewall Propeller Fans

##### Wall Housing Pack (Gravity)

HVAC No.	MFG Part No.	Description	Price
385847	WHPGED1012	Wall Housing Pack-Gravity fits size 10, 12	\$529.58
385870	WHPGED1416	Wall Housing Pack-Gravity fits size 14, 16	\$587.04
385892	WHPGED1820	Wall Housing Pack-Gravity fits size 18, 20	\$660.04

##### Wall Housing Pack (Motorized)

HVAC No.	MFG Part No.	Description	Price
469567	WHPGED1012M	Wall Housing Pack-motorized fits size 10, 12	\$919.50
469570	WHPGED1416M	Wall Housing Pack-motorized fits size 14, 16	\$975.00
469577	WHPGED1820M	Wall Housing Pack-motorized fits size 18, 20	\$1045.50

#### LCE Series Sidewall Belt Drive Propeller Exhaust Fans

- Available from 20" to 60"
- 3,000 to 40,000 CFM
- Up to .625" wg static
- Wall housings, wall collars, dampers and guards available
- Rain hoods available as accessories



##### Single Phase Tri-Voltage Motor

HVAC No.	MFG Part No.	Voltage	Max HP	Airflow Range	Max Static Press	Price
386007	LCE20RH1S	115/208/230V	3/4 hp	2783 to 5630 CFM	1/2"	\$1176.00
386240	LCE24TH1S	115/208/230V	1 1/2 hp	2256 to 9774 CFM	5/8"	\$1687.30
386256	LCE30TH1S	115/208/230V	1 1/2 hp	4215 to 13339 CFM	1/2"	\$1745.24
386305	LCE36VH1S	115/208/230V	2hp	5537 to 19165 CFM	1/2"	\$1954.64
386351	LCE42VH1S	115/208/230V	2hp	5438 to 23755 CFM	5/8" 3/8"	\$2143.28
386366	LCE48VH1S	115/208/230V	2hp	6659 to 28209 CFM	1/2" 3/8"	\$2143.28

##### Three Phase Tri-Voltage Motor

HVAC No.	MFG Part No.	Voltage	Max HP	Airflow Range	Max Static Press	Price
385976	LCE20RH3S	208/230/460V	3/4 hp	2783 to 5630 CFM	1/2"	\$1054.50
386072	LCE24TH3S	208/230/460V	1 1/2 hp	2256 to 9774 CFM	5/8"	\$1455.00
386098	LCE30TH3S	208/230/460V	1 1/2 hp	4215 to 13339 CFM	1/2"	\$1492.74
386114	LCE36VH3S	208/230/460V	2hp	5537 to 19165 CFM	1/2"	\$1528.38
386189	LCE42VH3S	208/230/460V	2hp	5438 to 23755 CFM	5/8" 3/8"	\$1783.86
386206	LCE48VH3S	208/230/460V	2hp	6659 to 28209 CFM	1/2" 3/8"	\$1862.56
386483	LCE54WH3S	208/230/460V	3hp	10232 to 36809 CFM	1/2" 1/2"	\$2959.00
386494	LCE60WH3S	208/230/460V	3hp	16672 to 40855 CFM	3/8" 3/8"	\$2905.88

#### Accessories for LCE Series Sidewall Exhaust Fans

##### Wall Housing Pack (Gravity)

HVAC No.	MFG Part No.	Description	Price
385898	WHPLCE20	Wall Housing Pack, Exhaust-Gravity fits size 20	\$771.86
385912	WHPLCE24	Wall Housing Pack, Exhaust-Gravity fits size 24	\$891.00
385932	WHPLCE30	Wall Housing Pack, Exhaust-Gravity fits size 30	\$972.00
385981	WHPLCE36	Wall Housing Pack, Exhaust-Gravity fits size 36	\$1279.50
386023	WHPLCE42	Wall Housing Pack, Exhaust-Gravity fits size 42	\$1593.74



## VENTILATION

### Jenco

#### Accessories for LCE Series Sidewall Exhaust Fans (Continued)

##### Wall Housing Pack (Gravity)

HVAC No.	MFG Part No.	Description	Price
386141	WHPLCE48	Wall Housing Pack, Exhaust-Gravity fits size 48	\$1743.74
386432	WHPLCE54	Wall Housing Pack, Exhaust-Gravity fits size 54	\$2516.08
386496	WHPLCE60	Wall Housing Pack, Exhaust-Gravity fits size 60	\$2819.08

##### Wall Housing Pack (Motorized)

HVAC No.	MFG Part No.	Description	Price
469581	WHPLCE20M	Wall Housing Pack, Exhaust-motorized fits size 20	\$1155.00
469594	WHPLCE24M	Wall Housing Pack, Exhaust-motorized fits size 24	\$1296.00
469597	WHPLCE30M	Wall Housing Pack, Exhaust-motorized fits size 30	\$1378.50
469617	WHPLCE36M	Wall Housing Pack, Exhaust-motorized fits size 36	\$1766.02
469631	WHPLCE42M	Wall Housing Pack, Exhaust-motorized fits size 42	\$2097.24
469635	WHPLCE48M	Wall Housing Pack, Exhaust-motorized fits size 48	\$2242.80
469645	WHPLCE54M	Wall Housing Pack, Exhaust-motorized fits size 54	\$2918.60
469650	WHPLCE60M	Wall Housing Pack, Exhaust-motorized fits size 60	\$3105.46

##### Rain Hoods

HVAC No.	MFG Part No.	Description	Price
385795	5520.8.24KDS	Fits Size 24	\$378.94
385813	5520.8.30KDS	Fits Size 30	\$425.54
385837	5520.8.36KDS	Fits Size 36	\$496.96
385864	5520.8.42KDS	Fits Size 42	\$568.40
385894	5520.8.48KDS	Fits Size 48	\$692.66
385948	5520.8.54KDS	Fits Size 54	\$966.00
386030	5520.8.60KDS	Fits Size 60	\$1324.50

#### LCS Series Sidewall Belt Drive Supply Propeller Fans

- High capacity, rated from 3,000 to 4,000 CFM, with static pressure capability up to 5/8"
- Primary application is the supply of large volumes of air at relatively low static pressures
- Well suited for manufacturing /assembly plants, warehouses, parking garages, gyms, distribution centers, greenhouses
- Wall mounted
- Wide range of accessories available
- Can also be suspended from high ceiling to direct large volumes of air downward toward work centers for improved employee comfort



##### Single Phase Tri-Voltage Motor

HVAC No.	MFG Part No.	Voltage	Max HP	Airflow Range	Max Static Press	Price
386007	LCS20RH1S	115/208/230V	3/4 hp	2783 to 5630 CFM	1/2"	\$1176.00
386240	LCS24TH1S	115/208-230V	1 1/2 hp	2256 to 9774 CFM	5/8"	\$1687.30
386256	LCS30TH1S	115/208/230V	1 1/2 hp	4215 to 13339 CFM	1/2"	\$1745.24
386305	LCS36VH1S	115/208/230V	2hp	5537 to 19165 CFM	1/2"	\$1954.64
386351	LCS42VH1S	115/208/230V	2hp	5438 to 23755 CFM	5/8" 3/8"	\$2143.28
386366	LCS48VH1S	115/208/230V	2hp	6659 to 28209 CFM	1/2" 3/8"	\$2143.28

## VENTILATION

### Jenco

#### Three Phase Tri-Voltage Motor

HVAC No.	MFG Part No.	Voltage	Max HP	Airflow Range	Max Static Press	Price
385976	LCS20RH3S	208/230/460V	3/4 hp	2783 to 5630 CFM	1/2"	\$1054.50
386072	LCS24TH3S	208/230/460V	1 1/2 hp	2256 to 9774 CFM	5/8"	\$1455.00
386098	LCS30TH3S	208/230/460V	1 1/2 hp	4215 to 13339 CFM	1/2"	\$1492.74
386114	LCS36VH3S	208/230/460V	2hp	5537 to 19165 CFM	1/2"	\$1528.38
386189	LCS42VH3S	208/230/460V	2hp	5438 to 23755 CFM	5/8" 3/8"	\$1783.86
386206	LCS48VH3S	208/230/460V	2hp	6659 to 28209 CFM	1/2" 3/8"	\$1862.56
386483	LCS54WH3S	208/230/460V	3hp	10232 to 36809 CFM	1/2"	\$2959.00
386494	LCS60WH3S	208/230/460V	3hp	16672 to 40855 CFM	3/8"	\$2905.88

#### Accessories for LCS Series Sidewall Supply Fan

##### Wall Housing Pack (Gravity)

HVAC No.	MFG Part No.	Description	Price
385913	WHPLCS20	Wall Housing Pack, Supply-Gravity fits size 20	\$771.86
385941	WHPLCS24	Wall Housing Pack, Supply-Gravity fits size 24	\$891.00
385966	WHPLCS30	Wall Housing Pack, Supply-Gravity fits size 30	\$972.00
386036	WHPLCS36	Wall Housing Pack, Supply-Gravity fits size 36	\$1279.50
386184	WHPLCS42	Wall Housing Pack, Supply-Gravity fits size 42	\$1593.74
386246	WHPLCS48	Wall Housing Pack, Supply-Gravity fits size 48	\$1743.74
386477	WHPLCS54	Wall Housing Pack, Supply-Gravity fits size 54	\$2516.08
386534	WHPLCS60	Wall Housing Pack, Supply-Gravity fits size 60	\$2819.08

##### Wall Housing Pack (Motorized)

HVAC No.	MFG Part No.	Description	Price
469582	WHPLCS20M	Wall Housing Pack, Supply-motorized fits size 20	\$1155.00
469595	WHPLCS24M	Wall Housing Pack, Supply-motorized fits size 24	\$1296.00
469598	WHPLCS30M	Wall Housing Pack, Supply-motorized fits size 30	\$1378.50
469618	WHPLCS36M	Wall Housing Pack, Supply-motorized fits size 36	\$1766.02
469632	WHPLCS42M	Wall Housing Pack, Supply-motorized fits size 42	\$2097.24
469636	WHPLCS48M	Wall Housing Pack, Supply-motorized fits size 48	\$2242.80
469646	WHPLCS54M	Wall Housing Pack, Supply-motorized fits size 54	\$2918.60
469651	WHPLCS60M	Wall Housing Pack, Supply-motorized fits size 60	\$3105.46

#### SQB Series Square Inline Belt Drive Centrifugal Duct Fans

- Exhaust air up to 24,000 CFM
- High static pressure applications up to 3-1/2" w.g.
- Belt drives permit easy performance adjustments when needed
- Ideal for applications where space is limited
- Non-overloading backward inclined wheel for efficiency at higher static pressures
- AMCA Air and Sound Licensed
- cULus 705 Listed



##### Single Phase Motor

HVAC No.	MFG Part No.	Airflow Range	Max Static Pressure	Max HP	Voltage	Price
386268	SQB07PH1S	86 to 423 CFM	1-3/4"	1/2 HP	115V	\$1773.44
386282	SQB08QH1S	331 to 1318 CFM	1-3/4"	3/4 HP	115/208-230V	\$1849.20
386360	SQB10RH1S	436 to 2027 CFM	2"	1 HP	115/208-230V	\$1923.46

## VENTILATION

### Jenco

#### SQB Series Square Inline Belt Drive Centrifugal Duct Fans (Continued)

##### Single Phase Motor

HVAC No.	MFG Part No.	Airflow Range	Max Static Pressure	Max HP	Voltage	Price
386453	SQB12SH1S	769 to 3384 CFM	2"	1-1/2 HP	115/208-230V	\$2172.98
386536	SQB15TH1S	1135 to 4421 CFM	2-1/4"	2 HP	115/208-230V	\$2501.24
469649	SQB18VH1S	1443 to 6111 CFM	2-1/4"	3 HP	115/208-230V	\$3012.12
469652	SQB20VH1S	2028 to 7916 CFM	2-1/4"	3 HP	115/208-230V	\$3375.36

##### Three-Phase Motor

HVAC No.	MFG Part No.	Airflow Range	Max Static Pressure	Max HP	Voltage	Price
386317	SQB07PH3S	86 to 423 CFM	1-3/4"	1/2 HP	208/230/460V	\$1812.06
386296	SQB08QH3S	331 to 1318 CFM	1-3/4"	3/4 HP	208/230/460V	\$1932.36
386326	SQB10RH3S	436 to 2027 CFM	2"	1 HP	208/230/460V	\$1932.36
386395	SQB12SH3S	769 to 3384 CFM	2"	1-1/2 HP	208/230/460V	\$2174.48
386464	SQB15TH3S	1135 to 4421 CFM	2-1/4"	2 HP	208/230/460V	\$2398.76
386519	SQB18VH3S	1443 to 6111 CFM	2-1/4"	3 HP	208/230/460V	\$2721.06
386575	SQB20VH3S	2028 to 7916 CFM	2-1/4"	3 HP	208/230/460V	\$2997.78
386679	SQB24WH3S	2395 to 9084 CFM	1-3/4"	3 HP	208/230/460V	\$4310.02

#### Accessories for SQB Series Centrifugal Duct Fans

##### Rubber Hanging Style Vibration Isolators

HVAC No.	MFG Part No.	Description	Price
385756	VHRSQ06-15	Fits Size 7, 8, 10, 12, 15	\$408.44
385833	VHRSQ18-20	Fits Size 18, 20, 24	\$458.14

##### Rubber Floor Mount Vibration Isolators

HVAC No.	MFG Part No.	Description	Price
385703	VFRSQ06-15	Fits Size 7, 8, 10, 12	\$300.26
385794	VFRSQ06-15	Fits Size 15, 18, 20, 24	\$358.76

#### SQD Series Inline Direct Drive Centrifugal Duct Fans

- Up to 2800 CFM
- Static Pressure capability up to 1"
- Compact housing with removable access doors and side discharge capability can be mounted in any orientation



HVAC No.	MFG Part No.	Airflow Range	Max Static Press	Motor HP	Voltage	Price
385922	SQD601AS	93 to 424 CFM	1"	1/10 HP	115V	\$760.98
386021	SQD10501AS	149 to 503 CFM	1/4"	1/25 HP	115V	\$1284.00
386021	SQD10501AS	305 to 1076 CFM	1/2"	1/4 HP	115V	\$1284.00
386053	SQD12501AS	529 to 1686 CFM	1/2"	1/4 HP	115V	\$1546.20
386203	SQD15501AS	793 to 2879 CFM	3/4"	1/2 HP	115V	\$1755.62
386022	SQD10501CS	305 to 1076 CFM	1/2"	1/4 HP	230V	\$1264.50
386054	SQD12501CS	529 to 1686 CFM	1/2"	1/4 HP	230V	\$1519.48
386204	SQD15501CS	793 to 2879 CFM	3/4"	1/2 HP	230V	\$1724.44

## VENTILATION

### Jenco

#### Accessories for SQD Series Centrifugal Duct Fans

##### Rubber Hanging Style Vibration Isolators

HVAC No.	MFG Part No.	Description	Price
385756	VHRSQ06-15	Fits Size 7, 8, 10, 12, 15	\$408.44

##### Rubber Floor Mount Vibration Isolators

HVAC No.	MFG Part No.	Description	Price
385703	VFRSQ06-15	Fits Size 7, 8, 10, 12	\$300.26

#### TD Series Inline Mixed Flow Duct Fans

- Exhaust air up to 1,050 CFM with static pressure capabilities to 1" w.g.
- Mixed flow impeller for excellent air flow to pressure performance ratio
- Direct connection, two-speed motor
- 120v power
- Ideal for applications where space is limited
- AMCA Seal for Air Performance
- cULus Listed



HVAC No.	MFG Part No.	Duct Connection	Max Airflow	Max Static Press.	Price
385720	TD-100	4"	101 CFM	0.4"	\$196.54
385754	TD-100X1	4"	135 CFM	0.55"	\$231.80
385781	TD-125	5"	197 CFM	0.55"	\$255.94
385832	TD-150	6"	293 CFM	1.15"	\$315.28
385877	TD-200	8"	538 CFM	1.625"	\$400.68
385962	TD-250LS	10"	541 CFM	2.03"	\$731.48
385997	TD-315LS	12.4"	751 CFM	1.65"	\$837.00
469185	TD-355	14"	2089 CFM	1.0"	\$1422.00
469186	TD-400	16"	3124 CFM	1.2"	\$2290.32

#### TD Series Exhaust Fan Standard Kits

- Includes one fan, 1 plastic round intake grille, once louvered exterior grille
- Important Note: If venting in a non-insulated attic space, or in a cold climate, the insulated flexible duct is strongly recommended for condensation issues.



HVAC No.	MFG Part No.	Description	Price
469174	KIT-TD100	Includes one TD-100 fan, one intake grille, one exterior grille	\$246.92
469176	KIT-TD100X1	Includes one TD-100X1 fan, one intake grille, one exterior grille	\$277.26
469178	KIT-TD150	Includes one TD-150 fan, one intake grille, one exterior grille	\$382.04

#### TD Series Standard Lighted Exhaust Kits

- Single Vent
- Kits include 1 TD-100X1 fan and 1 Vent Light

HVAC No.	MFG Part No.	Description	Price
469536	KIT-TD100X1L	Kit: TD100X1 and VLED-100 (LED Bulb)	\$431.74
469523	KIT-TD100X1H	Kit: TD100X1 and VLH-100 (Halogen Bulb)	\$383.60
469524	KIT-TD100X1F	Kit: TD100X1 and VLF-100 (Fluorescent Bulb)	\$383.60

## VENTILATION

### Jenco

#### TD Series Exhaust Fan Deluxe Kits

- Includes one fan, two plastic round grilles, 1 exterior louvered grille, 1 Y-fitting, integral mounting bracket
- Important Note: If venting in a non-insulated attic space, or in a cold climate, the insulated flexible duct is strongly recommended for condensation issues.



HVAC No.	MFG Part No.	Description	Price
412012	KIT-TD150-DV	Includes one TD-150, two intake grilles, one exterior grille, 1 Y-fitting, 1 mounting bracket	\$451.94

#### TD Series Lighted Exhaust Fan Kits

- Includes one fan, 2 vent lights, 1 Y-fitting, 1 integral mounting bracket
- Important Note: If venting in a non-insulated attic space, or in a cold climate, the insulated flexible duct is strongly recommended for condensation issues.



HVAC No.	MFG Part No.	Description	Price
469184	KIT-TD150L	Includes one TD150, two vent lights (LED bulb), one Y-fitting, 1 mounting bracket	\$766.50
469182	KIT-TD150H	Includes one TD150, two vent lights (Halogen bulb), one Y-fitting, 1 mounting bracket	\$692.66
469183	KIT-TD150F	Includes one TD150, two vent lights (Flourescent bulb), one Y-fitting, 1 mounting bracket	\$692.66

#### TD Series Outside Air Kits

- Includes one fan, one steel backdraft damper, 1 programmable fan timer
- IEEC 2015 Code Section R403.6.1 compliant
- Controller is 7-day programmable.
- Controller is LCD display, with rechargeable batter back-up.



HVAC No.	MFG Part No.	Description	Price
469177	OSAK-125	Includes one TD125, 1 backdraft damper, 1 controller	\$361.86

#### TD-SILENT Series Mixed Flow Duct Fans

- Extremely quiet
- Exhaust air up to 530 CFM, with static pressure capabilities up to 1" w.g.
- Direct connection, single-speed motor
- cULus Listed
- Energy Star qualified



HVAC No.	MFG Part No.	Duct Connection	Max Airflow	Max Statis Press.	Price
469179	TD-125XS	5"	203	0.6"	\$422.42
469180	TD-150S	6"	333	1.2"	\$493.86
469181	TD-200S	8"	530	1.2"	\$616.56

### Accessories for TD Fans

#### Duct Reducers

HVAC No.	MFG Part No.	Description	Price
469469	SR5-4	5 to 4" TD-Silent plastic duct reducers (Qty 2)	\$31.18

## VENTILATION

### Jenco

#### Backdraft Dampers

HVAC No.	MFG Part No.	Description	Price
448798	MCA-100	Backdraft Damper, 4"	\$96.94
469170	MCA-125	Backdraft Damper, 5"	\$111.86
469171	MCA-150	Backdraft Damper, 6"	\$115.60
469172	MCA-200	Backdraft Damper, 8"	\$178.98
469173	MCA-250	Backdraft Damper, 10"	\$216.68
469175	MCA-315	Backdraft Damper, 12.4"	\$246.10

#### Duct Connectors

HVAC No.	MFG Part No.	Description	Price
469470	MBR-125	5" TD circular fan duct connector	\$67.12
469471	MBR-150	6" TD circular fan duct connector	\$76.44
469476	MBR-200	8" TD circular fan duct connector	\$93.22
469483	MBR-250	10" TD circular fan duct connector	\$115.60
469486	MBR-315	12.4" TD circular fan duct connector	\$128.64

#### MRJ Series Mesh Grilles

HVAC No.	MFG Part No.	Description	Price
469474	MRJ100	4" TD plastic mesh grille	\$89.50
469477	MRJ125	5" TD plastic mesh grille	\$93.22
469479	MRJ150	6" TD plastic mesh grille	\$104.40
469484	MRJ200	8" TD plastic mesh grille	\$115.60
469485	MRJ250	10" TD plastic mesh grille	\$119.32

#### Energy Recovery Ventilators

- MERV-8 filters
- Non-Fused disconnect
- Transformer/relay package allowing simple on/off control
- Access doors for easy access to blowers, core and filters
- Integral mounting flange and hanging bracket system
- 2 Direct Drive, TEFC, Premium Efficient blower motors in 500/800
- 2 Belt Drive, TEFC Premium Efficient blower motors in the 1600
- Fully insulated case
- Large cores for high efficiency
- No condensate pan or drain required



HVAC No.	MFG Part No.	Motor	Airflow at Static Pressure	Weight	Price
455706	TR130	.1 HP Motor, 115VAC	137 CFM @ .30-IN S.P.	49 lbs	\$1730.36
455707	TR200	.1 HP Motor, 115VAC	186 CFM @ .30-IN S.P.	70 lbs	\$2241.30
455708	TR300	.2 HP Motor, 115VAC	295 CFM @ .50-IN S.P.	72 lbs	\$2550.26
455709	TRC500	.6 HP Motor, 208/230/1	540 CFM @ .50-IN S.P.	141 lbs	\$4947.70
455710	TRC800	.5 HP Motor, 208/230/1	860 CFM @ .50-IN S.P.	211 lbs	\$7576.16
455711	TRC1600	1.5 HP Motor, 208/230/1	1600 CFM @ .50-IN S.P.	414 lbs	\$15307.70



## VENTILATION

### Broan

#### Bathroom Exhaust Fans , Ultra Silent

- Very quiet operation 0.3 to 1.4 sones
- 80 CFM to 150 CFM
- QTXE features 6" ducting for superior performance
- QTXE models are ENERGY STAR qualified
- HVI Certified
- QTXE includes hanger bar system for fast, flexible installation for all types of construction
- Motor engineered for continuous operation
- UL Listed for use over bathtub or shower when connected to a GFCI protected branch circuit
- Fits 2" x 8" ceiling construction
- Radiation damper available



HVAC No.	MFG Part No.	Air FlowSound Level	Notes	Price
388976	QTXE080	80 CFM, 0.3 Sones		\$480.88
388978	QTXE110	110 CFM, 0.7 Sones		\$383.40
388973	QTX110HL	110 CFM, 0.9 Sones	With Heater, Light, Night Light	\$801.96
388982	QTXE150	150 CFM, 1.4 Sones		\$463.12

#### Utility/MultiPurpose Exhaust Fans



HVAC No.	MFG Part No.	Air FlowSound Level	Grille Size	Notes	Price
387391	678	50 CFM, 2.5 Sones	11" x 10-1/2"	With Builtin Light	\$130.70
387387	670	50 CFM, 3.5 Sones	9" Square		\$145.76
387389	673	60 CFM, 4.5 Sones	Round, 8" Diameter		\$133.44
387388	671	70 CFM, 6.0 Sones	9" Square		\$120.32
387403	750	100 CFM, 3.5 Sones	Round, 15" Diameter	With Light and NightLight	\$499.24
387404	751	100 CFM, 3.5 Sones	Round, 15" Diameter	With Builtin Light	\$408.22
387345	503	160 CFM, 5.0 Sones	11-1/2" Square		\$313.46
387347	505	180 CFM, 5.5 Sones	11-1/2" Square		\$262.70
387351	509	180 CFM, 6.5 Sones	11-1/2" Square		\$303.96
387349	507	250 CFM, 7.0 Sones	11-1/2" Square		\$481.58
387350	508	270 CFM, 6.0 Sones	13-1/2" Square		\$435.98
387344	502	270 CFM, 8.0 Sones	13-1/2" Square		\$436.42
387346	504	350 CFM, 6.5 Sones	13-1/2" Square		\$495.00
387671	12C	360 CFM, 8.0 Sones	13-1/2" Square	Through-Wall Mount	\$798.82
387348	506	470 CFM, 8.0 Sones	13-1/2" Square		\$435.98

#### Recessed Bathroom Exhaust Fans



HVAC No.	MFG Part No.	Air FlowSound Level	Notes	Price
387402	744	70 CFM, 1.5 Sones	Recessed with Light	\$329.76

## VENTILATION

### Broan

#### Bathroom Exhaust Fans

##### InVent® Series

- FoldAway™ mounting ears allow for easy installation in both new construction and room-side replacement
- New TrueSeal™ damper technology forms a tighter seal to reduce backdrafts
- EzDuct™ Connector allows roomside installation with no attic access required
- Effective ventilation clears humidity and odors
- Attractive grille styling



HVAC No.	MFG Part No.	Air FlowSound Level	Price
450110	AE50	50 CFM, 0.5 Sones	\$221.16
450106	A50L	50 CFM, 1.5 Sones	With Light \$231.32
449971	A70L	70 CFM, 2.0 Sones	With Light \$220.34
448898	AE80	80 CFM, 0.8 Sones	\$314.14
450097	AE80B	80 CFM, 1.5 Sones	\$174.22
450118	AE80BL	80 CFM, 1.5 Sones	With LED Light \$305.82
450108	A80	80 CFM 2.0 Sones	\$180.40
450115	A80HD	80 CFM 2.0 Sones	With Heavy Duty Metal Grille \$254.96
450127	A110L	110 CFM, 1.3 Sones	With Light \$456.88
450109	A110	110 CFM, 3.0 Sones	\$215.24

##### Low Profile

- FoldAway™ mounting ears allow for easy installation in both new construction and room-side replacement
- New TrueSeal™ damper technology forms a tighter seal to reduce backdrafts
- EzDuct™ Connector allows roomside installation with no attic access required
- Effective ventilation clears humidity and odors
- Attractive grille styling



HVAC No.	MFG Part No.	Air FlowSound Level	Price
440737	LP80	80 CFM	\$192.48

##### Multi-Speed

- FoldAway™ mounting ears allow for easy installation in both new construction and room-side replacement
- New TrueSeal™ damper technology forms a tighter seal to reduce backdrafts
- EzDuct™ Connector allows roomside installation with no attic access required
- Effective ventilation clears humidity and odors
- Attractive grille styling



HVAC No.	MFG Part No.	Air FlowSound Level	Price
439918	ZB80	80 CFM, 0.3 Sones	\$429.54

## VENTILATION

### Broan

#### Ultra Green Series

- FoldAway™ mounting ears allow for easy installation in both new construction and room-side replacement
- New TrueSeal™ damper technology forms a tighter seal to reduce backdrafts
- EzDuct™ Connector allows roomside installation with no attic access required
- Effective ventilation clears humidity and odors
- Attractive grille styling



HVAC No.	MFG Part No.	Air FlowSound Level	Notes	Price
446560	XB50	50 CFM, 0.3 Sones		\$383.50
450058	ZB80L	80 CFM, <0.3 Sones	With Light	\$588.60
418201	XB80	80 CFM, 0.3 Sones		\$395.10
418393	XB110	110 CFM, 0.3 Sones		\$435.70
446561	ZB110	110 CFM, 0.3 Sones		\$473.86

#### High Capacity Bath and Ventilation Fans

##### 100/150 CFM FEATURES

- 6" round metal duct connector
- Single, impact-resistant centrifugal blower wheel housing
- 20 gauge galvanized steel housing
- Duct horizontally, vertically, or in-line with a separate adapter
- Low profile, white polymeric or painted white enamel metal grille
- Models L100L and L150L are UL Listed for use over bathtubs or showers when connected to a GFCI branch circuit
- Model 80L Variable Speed Control adjusts blower speed and sound level



##### 200/250/300 CFM FEATURES

- 8" round metal duct connector
- Single, impact-resistant centrifugal blower wheel (Model L300KMG has a metal wheel)
- 20 gauge galvanized steel housing
- Duct horizontally, vertically, or in-line with a separate adapter
- Models L200L, L250L and L300L are UL Listed for use over bathtubs or showers when connected to a GFCI branch circuit

HVAC No.	MFG Part No.	Horizontal Discharge	Vertical Discharge	Construction	Price
388646	L100	109 CFM, 0.9 Sones	109 CFM, 0.9 Sones		\$368.26
388650	L100MG	115 CFM, 0.9 Sones	115 CFM, 0.9 Sones	Metal Grille	\$489.32
388651	L150	157 CFM, 1.5 Sones	157 CFM, 1.5 Sones		\$384.50
388659	L150MG	161 CFM, 1.4 Sones	162 CFM, 1.6 Sones	Metal Grille	\$504.02
388660	L200	210 CFM, 1.7 Sones	210 CFM, 1.7 Sones		\$426.98
388665	L200MG	215 CFM, 1.9 Sones	209 CFM, 1.8 Sones	Metal Grille	\$549.76
388666	L250	259 CFM, 2.2 Sones	259 CFM, 2.2 Sones		\$455.74
388670	L250MG	265 CFM, 2.5 Sones	262 CFM, 2.7 Sones	Metal Grille	\$578.96
388674	L300KMG	277 CFM, 3.1 Sones	277 CFM, 3.7 Sones	Metal Grille	\$625.90
388671	L300	308 CFM, 2.9 Sones	308 CFM, 2.9 Sones		\$459.74
388676	L300MG	316 CFM, 3.0 Sones	314 CFM, 2.8 Sones	Metal Grille	\$590.34
388678	L400	434 CFM, 2.3 Sones	434 CFM, 2.3 Sones		\$747.38
388687	L500K	481 CFM, 4.4 Sones	473 CFM, 4.0 Sones		\$903.42
388684	L500	514 CFM, 3.3 Sones	514 CFM, 3.3 Sones		\$899.72
388690	L700	701 CFM, 4.7 Sones	701 CFM, 4.7 Sones		\$986.86
388694	L900	901 CFM, 4.1 Sones	901 CFM, 4.1 Sones		\$1218.96

# VENTILATION

## Broan

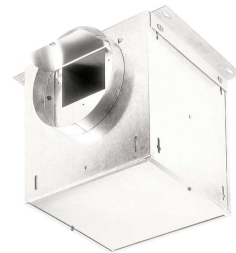
### High Capacity Bath and Ventilation Fans (Continued)

HVAC No.	MFG Part No.	Horizontal Discharge	Vertical Discharge	Construction	Price
388652	L1500	1513 CFM, 8.4 Sones	1513 CFM, 8.4 Sones		\$1361.96

### High Capacity Inline Ventilators

#### L100L/L150L CFM FEATURES

- 6" round metal duct connector
- Single, impact-resistant centrifugal blower wheel housing
- 20 gauge galvanized steel housing
- Duct horizontally, vertically, or in-line with a separate adapter
- Low profile, white polymeric or painted white enamel metal grille
- Models L100L and L150L are UL Listed for use over bathtubs or showers when connected to a GFCI branch circuit
- Model 80L Variable Speed Control (available separately) adjusts blower speed and sound level



#### L200L/L250L/L300L CFM FEATURES

- 8" round metal duct connector
- Single, impact-resistant centrifugal blower wheel
- 20 gauge galvanized steel housing
- Duct in-line with a separate adapter
- Models L200L, L250L and L300L are UL Listed for use over bathtubs or showers when connected to a GFCI branch circuit

HVAC No.	MFG Part No.	Description	Price
388649	L100L	95 CFM, 0.3 Sones 106 CFM, 0.7 Sones	\$476.64
388658	L150L	147 CFM, 1.1 Sones 147 CFM, 1.1 Sones	\$491.36
388664	L200L	183 CFM, 1.0 Sones 195 CFM, 1.9 Sones	\$538.06
388669	L250L	238 CFM, 1.7 Sones 245 CFM, 2.3 Sones	\$567.22
388675	L300L	283 CFM, 2.4 Sones 293 CFM, 3.1 Sones	\$578.64
388682	L400KL	380 CFM, 2.0 Sones 375 CFM, 3.1 Sones	\$864.92
388683	L400L	391 CFM, 1.2 Sones 406 CFM, 1.6 Sones	\$801.32
388688	L500KL	459 CFM, 1.8 Sones 472 CFM, 3.8 Sones	\$932.44
388689	L500L	519 CFM, 3.4 Sones 519 CFM, 3.4 Sones	\$894.62
388693	L700L	629 CFM, 2.7 Sones 681 CFM, 3.7 Sones	\$1037.50
388697	L900L	858 CFM, 3.4 Sones 884 CFM, 3.8 Sones	\$1278.82
388655	L1500L	1076 CFM, 3.5 Sones 1214 CFM, 6.7 Sones	\$1421.68
388661	L2000L	1898 CFM, 10.1 Sones 1791 CFM, 9.4 Sones	\$1925.06
388677	L3500EXL	3696 CFM, 14.2 Sones 3452 CFM, 14.5 Sones	\$2664.72

### Inline Ventilator, Single Port

- Inline fans 110 to 200 CFM
- 6" round inlet and outlet



HVAC No.	MFG Part No.	Air FlowSound Level	Price
389203	SP100	110 CFM, 1.0 Sones	\$507.94
389204	SP140	150 CFM, 1.5 Sones	\$673.26
389205	SP200	210 CFM, 2.0 Sones	\$564.30

## VENTILATION

### Broan

#### Controls

- Model 80L Variable Speed Control adjusts blower speed and sound level



HVAC No.	MFG Part No.	Description	Color	Price
387838	57V	Electronic Variable Speed, 3 Amps	Ivory	\$110.14
387839	57W	Electronic Variable Speed, 3 Amps	White	\$110.14
387841	59V	60 Minute Time Control With Continuous On, 20 Amps	Ivory	\$131.22
387842	59W	60 Minute Time Control With Continuous On, 20 Amps	White	\$131.22
387854	61V	15 Minute Time Control, 20/10 Amps	Ivory	\$131.22
387855	61W	15 Minute Time Control, 20/10 Amps	White	\$131.22
387928	72W	Electronic Variable Speed, 6 Amp	White	\$184.66
387999	80L	Variable Speed Control, 3A 120V		\$120.40

#### Wall and Roof Caps, High Capacity

- High-capacity design up to 1200 CFM
- Built-in bird screen
- Steel housing, black
- Electrically bonded
- Epoxy finish



HVAC No.	MFG Part No.	Description	Price
387334	437	High Capacity Roof Cap, Up to 1200 CFM, Black	\$480.48
387335	441	Aluminum Wall Cap with Gravity Damper for 10" Round Duct	\$219.96

#### Attic Ventilators



HVAC No.	MFG Part No.	Description	Price
387304	358	1200 CFM, With Aluminum Dome	\$486.72

#### Aluminum Roof / Wall Caps



HVAC No.	MFG Part No.	Description	Size	Price
387359	611	Roof Cap for Flat Roofs	8"	\$199.04
387360	612	Roof Cap for Flat Roofs	12"	\$309.04
387361	613	Wall Cap	12"	\$216.56

## VENTILATION

### Broan

#### Wall and Roof Caps



HVAC No.	MFG Part No.	Description	Price
387370	634	Roof Cap, Exhaust, Fits 3-1/4" x 10" or up to 8" Round Duct, Steel	\$85.36
387373	641	Wall Cap, Exhaust, Fits 6" Round Duct, Steel/Aluminum	\$131.60
387375	643	Wall Cap, Exhaust, Fits 8" Round Duct, Steel/Aluminum	\$196.56
387376	644	Roof Cap, Exhaust, Fits 3-1/4" x 10" or up to 8" Round Duct, Steel/Aluminum	\$146.90
387378	646	Wall Cap, Exhaust, Fits 6" Round Duct, Plastic Louvered	\$114.78
387379	647	Wall Cap, Exhaust, Fits 7" Round Duct, Aluminum	\$176.18
387380	649	Wall Cap, Exhaust, Fits 3-1/4" x 10" Duct, Aluminum	\$107.50
395391	641FA	Wall Cap, Inlet, Fits 6" Round Duct, Steel/Aluminum	\$125.64



# VENTILATION

## Louvers and Dampers

### Aluminum Dampers

- Available in Single, Parallel, Opposed Blade and Air Foil Construction
- Multiple finishes and construction options
- Various actuators available
- Call for pricing



HVAC No.	MFG Part No.	Description	Size Range Available	Price
Special Order Item	A11	Single Blade Damper	6" x 6" - 120" x 120"	CALL
Special Order Item	A28	Low Leak Air Foil Damper	6" x 6" - 120" x 120"	CALL
Special Order Item	AD5	Parallel Air Foil Damper	6" x 6" - 120" x 120"	CALL
Special Order Item	T28B	Insulated Air Foil Damper	6" x 6" - 120" x 120"	CALL

### Steel Dampers

- Available in Single, Parallel, Opposed Blade and Air Foil Construction
- Multiple finishes and construction options
- Various actuators available
- Call for pricing



HVAC No.	MFG Part No.	Description	Size Range Available	Price
Special Order Item	D150VCD	Single Blade Balancing Damper	6" x 6" - 36" x 12"	CALL
Special Order Item	D1770	Control Damper	6" x 6" - 36" x 12"	CALL
Special Order Item	D395	Low Leak Control Damper	6" x 6" - 36" x 12"	CALL
Special Order Item	DID200	Insulated Steel Damper	6" x 6" - 36" x 12"	CALL
Special Order Item	GB1	5" balancing damper	6" x 6" - 36" x 12"	CALL
Special Order Item	I11	3.5" control damper	6" x 6" - 36" x 12"	CALL

### Round Dampers

- Available in single blade design
- Hand quadrant and motor actuators available
- Call for pricing



HVAC No.	MFG Part No.	Description	Size Range Available	Price
Special Order Item	L12	Round Volume Control Damper	6" through 24"	CALL
Special Order Item	L70	Galvanized Control Damper	6" through 24"	CALL
Special Order Item	L75	Aluminum Control Damper	6" through 24"	CALL
Special Order Item	L80	Stainless Steel Control Damper	6" through 24"	CALL

### Backdraft Dampers

- Available in aluminum or galvanized construction
- Call for pricing



HVAC No.	MFG Part No.	Description	Size Range Available	Price
Special Order Item	225B	Aluminum	4" x 4" - 120" x 120"	CALL
Special Order Item	D388	Galvanized Steel	4" x 4" - 120" x 120"	CALL

## VENTILATION

### Louvers and Dampers

#### Combination Louvers/Dampers

- Available in aluminum or steel construction
- Various depths in stationary or adjustable design
- Various finishes and actuators available
- Call for pricing



HVAC No.	MFG Part No.	Description	Size Range Available	Price
Special Order Item	AC45C	4" Deep, 35 Degree Blades	12" x 12" - 144" x 144"	CALL
Special Order Item	DC65D	6" Deep, 35 Degree Blades	12" x 12" - 144" x 144"	CALL
Special Order Item	EL47A	4" Deep, 45 Degree Blades	12" x 12" - 144" x 144"	CALL
Special Order Item	EL62A	6" Deep, 45 Degree Blades	12" x 12" - 144" x 144"	CALL

#### Brick Vents

- Available in numerous sizes and finishes
- Call for pricing



HVAC No.	MFG Part No.	Size	Price
Special Order Item	133	8" x 2.3"	CALL
Special Order Item	135	8" x 4.75"	CALL
Special Order Item	140	8" x 7.75"	CALL
Special Order Item	127	12" x 2.3"	CALL
Special Order Item	125	12" x 4.75"	CALL

#### Gravity Ventilators

- Available 6"x6" up to 60"x72"
- Available in numerous finishes
- Call for pricing



HVAC No.	MFG Part No.	Description	Size Range Available	Price
Special Order Item	AGV1	Aluminum, Low Profile	12" x 12" - 72" x 72"	CALL

## VENTILATION

### Lloyd Industries

#### Lloyd Industries Storm Resistant Louvers

- 2" Deep louver with flange frame
- Capable of intake or exhaust
- Blade spacing approximately 2-1/2" center to center
- Blade angle 45 degrees, includes Birdscreen
- Other finishes and construction materials available



HVAC No.	MFG Part No.	Size	Bird Screen	Flange	Depth	Price
128516	2-SRF-6X6	6" x 6"	With Bird Screen	With Flange	2"	\$87.92
128173	2-SRF-8X8	8" x 8"	With Bird Screen	With Flange	2"	\$112.80
327196	2-SRF-10X10	10" x 10"	With Bird Screen	With Flange	2"	\$121.96
86765	2-SR-12X12	12" x 12"	Without Bird Screen	Without Flange	2"	\$130.68
377156	4-SRCF-12X12	12" x 12"	With Bird Screen	With Flange	4"	\$198.18
160425	2-SRF-12x18	12" x 18"	With Bird Screen	With Flange	2"	\$134.18
162187	2-SRF-14X14	14" x 14"	With Bird Screen	With Flange	2"	\$229.40
129719	2-SRF-16X16	16" x 16"	With Bird Screen	With Flange	2"	\$227.96
129712	4-SRCF-18X18	18" x 18"	With Bird Screen	With Flange	4"	\$276.70
163865	2-SRF-18X18	18" x 18"	With Bird Screen	With Flange	2"	\$227.96
129722	2-SRF-20X20	20" x 20"	With Bird Screen	With Flange	2"	\$322.96
129762	2-SRF-24X24	24" x 24"	With Bird Screen	With Flange	2"	\$322.96
392678	4-SRF-24X24	24" x 24"	With Bird Screen	With Flange	4"	\$353.66
127823	4-SRCF-36X36	36" x 36"	With Bird Screen	With Flange	4"	\$557.22
127850	4-SRCF-48X48	48" x 48"	With Bird Screen	With Flange	4"	\$831.92

#### Fantech Inline Fan

- Centrifugal Inline fan
- 100% speed-controllable
- Air stream temperatures up to 140°F
- Can be used for exhaust or make-up air supply, crawl space venting, or as a booster fan to move air from one room or area to another.
- Not designed or recommended for radon applications.



HVAC No.	MFG Part No.	Size	CFM	Price
61940	FR100	4"	108 CFM	\$656.00
61941	FR110	4"	167 CFM	\$720.00
61942	FR125	5"	131 CFM	\$441.54
61943	FR140	6"	213 CFM	\$462.56
61944	FR150	6"	243 CFM	\$483.58
61945	FR160	6"	289 CFM	\$599.24
61946	FR200	8"	408 CFM	\$552.56
61947	FR225	8"	429 CFM	\$645.30
61948	FR250	10"	563 CFM	\$738.00

## VENTILATION

### Tjernlund

#### Booster Fan

- P Series are plastic housing exhaust fans ideal for humid environments
- Available in 4" - 8" sizes



HVAC No.	MFG Part No.	Size	Price
118491	P-4	4"	\$362.72
118492	P-6	6"	\$432.96

#### UnderAire Crawlspace Ventilator

- 3 Models to choose from
- V1 for brick, V1D single fan and V2D double fan
- V1D and V2D include dehumidistat



HVAC No.	MFG Part No.	CFM	Price
360784	V1D	110 CFM	\$313.96
366439	V2D	220 CFM	\$402.42

## VENTILATION

### Portals Plus

#### Portals Plus Alumi-Flash System

##### Standard Base Kit

- Compatible with all types of roof systems
- Single cap accommodates a variety of pipes, tubes and angle irons from 2" to 6"
- Base is 14" diameter with 4" height
- EPDM cap eliminates roof leaks by allowing penetrations to expand, contract and vibrate independently
- EPDM has service temperature of -60°F to +270°F



HVAC No.	MFG Part No.	Description	Price
457299	22015	Standard Mill Finish Base w/ Black #126 Cap	\$281.76
457300	22025	Standard Mill Finish Base w/ Black #212 Cap	\$281.76
457301	22035	Standard Mill Finish Base w/ Black #412 Cap	\$281.76
457302	22045	Standard Mill Finish Base w/ Black #481 Cap	\$281.76
457303	22051	Standard Mill Finish Base w/ Black #182 Cap	\$507.48
457304	22065	Standard Mill Finish Base w/ White #126 Cap	\$285.60
457305	22075	Standard Mill Finish Base w/ White #212 Cap	\$285.60

##### Primed Extra Wide Base Kit

- Compatible with all types of roof systems
- Single cap accommodates a variety of pipes, tubes and angle irons from 2" to 6"
- Base is 18" diameter with 4" height
- EPDM cap eliminates roof leaks by allowing penetrations to expand, contract and vibrate independently
- EPDM has service temperature of -60°F to +270°F



HVAC No.	MFG Part No.	Description	Price
457306	22215	Extra Wide Primed Base w/ Black #126 Cap	\$364.84
457307	22225	Extra Wide Primed Base w/ Black #212 Cap	\$364.84
457308	22235	Extra Wide Primed Base w/ Black #412 Cap	\$364.84
457309	22245	Extra Wide Primed Base w/ Black #481 Cap	\$364.84
457310	22265	Extra Wide Primed Base w/ White #126 Cap	\$369.58
458685	22275	Extra Wide Primed Base w/ White #212 Cap	\$331.84

##### Mill Finish Extra Wide Base Kit

- Compatible with all types of roof systems
- Single cap accommodates a variety of pipes, tubes and angle irons from 2" to 6"
- Base is 18" diameter with 4" height
- EPDM cap eliminates roof leaks by allowing penetrations to expand, contract and vibrate independently
- EPDM has service temperature of -60°F to +270°F



HVAC No.	MFG Part No.	Description	Price
457311	23015	Extra Wide Mill Finish Base w/ Black #126 Cap	\$309.74
457312	23025	Extra Wide Mill Finish Base w/ Black #212 Cap	\$309.74
457313	23035	Extra Wide Mill Finish Base w/ Black #412 Cap	\$309.74
457314	23045	Extra Wide Mill Finish Base w/ Black #481 Cap	\$309.74
457315	23065	Extra Wide Mill Finish Base w/ White #212 Cap	\$314.30

## VENTILATION

### Portals Plus

#### Mill Finish Extra Tall Base Kit

- Compatible with all types of roof systems
- Single cap accommodates a variety of pipes, tubes and angle irons from 2" to 6"
- Base is 14" diameter with 13" height
- EPDM cap eliminates roof leaks by allowing penetrations to expand, contract and vibrate independently
- EPDM has service temperature of -60°F to +270°F



HVAC No.	MFG Part No.	Description	Price
457316	24015	Extra Tall Mill Finish Base w/ Black #126 Cap	\$507.62
457317	24025	Extra Tall Mill Finish Base w/ Black #212 Cap	\$507.62
457318	24035	Extra Tall Mill Finish Base w/ Black #412 Cap	\$507.62
457319	24045	Extra Tall Mill Finish Base w/ Black #481 Cap	\$507.62
457320	24065	Extra Tall Mill Finish Base w/ White #212 Cap	\$284.66

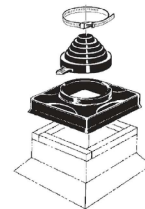
#### Alumi-Flash Components

HVAC No.	MFG Part No.	Description	Price
457323	29015	Standard Mill Finish Base Only	\$136.48
457324	29025	Large Mill Finish Base Only	\$259.52
457325	29035	Extra Wide Mill Finish Flash Base Only	\$172.44
457326	29045	Extra Tall Mill Finish Base Only	\$400.20
457328	29045	Black #126 Cap w/Clamps, Fits 1 Pipe, 2"-6" Diameter	\$165.08
457329	29045	Black #212 Cap w/Clamps, Fits 4 Pipes, Two 3/8"-1", Two 1"-2"	\$165.08
457330	29235	Black #412 Cap w/Clamps, Fits 4 Pipes, 1"-2"	\$165.08
457331	29245	Black #481 Cap w/Clamps, Fits 4 Pipes, 3/8"-1"	\$165.08
457332	29255	Black #182 Cap w/Clamps, Fits 1 Pipes, 8"-12", Fits Large Base	\$338.04
457333	29265	White #126 Cap w/Clamps, Fits 1 Pipe, 2"-6" Diameter	\$190.30
457334	29275	White #212 Cap w/Clamps, Fits 4 Pipes, Two 3/8"-1", Two 1"-2"	\$190.30

### Portals Plus Roof Curb Pipe Portal Systems

#### Single Pipe Portal

- A versatile, leakproof and weathertight solution to routing pipes through the roof
- Designed to allow vertical and horizontal pipe movement
- Accommodates pipe sizes 3/8" to 12"
- Can accommodate up to 5 pipes, depending on cap selected
- Use with Portals Plus roof curb



HVAC No.	MFG Part No.	Description	Price
455967	32005	Small Single Cover w/ Black #126 Cap	\$340.18
457339	32015	Small Single Cover w/ Black #212 Cap	\$340.18
457340	32025	Small Single Cover w/ Black #412 Cap	\$340.18
446982	32035	Small Single Cover w/ Black #481 Cap	\$340.18
457341	32041	Large Single Cover w/ Black #182 Cap	\$542.64
457342	32055	Small Single Cover w/ White #126 Cap	\$344.44
446983	32065	Small Single Cover w/ White #212 Cap	\$344.44
448307	29430	5-Cap Single Cover with 5 Black #555 Caps	\$394.90

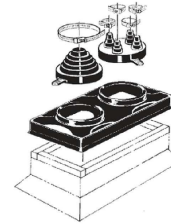


## VENTILATION

### Portals Plus

#### Double Pipe Portal

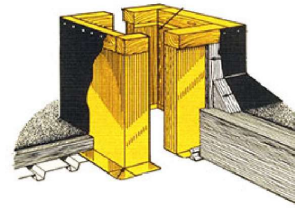
- A versatile, leakproof and weathertight solution to routing pipes through the roof
- Designed to allow vertical and horizontal pipe movement
- Accommodates pipe sizes 3/8" to 12"
- Can accommodate up to 8 pipes, depending on caps selected
- Use with Portals Plus roof curb



HVAC No.	MFG Part No.	Description	Price
457365	36002	Double Cover w/ Black #126 and #212 Caps	\$873.64
457366	36012	Double Cover w/ Black #126 and #412 Caps	\$894.94
457367	36022	Double Cover w/ Black #126 and #481 Caps	\$894.94
457368	36032	Double Cover w/ Black #126 and #126 Caps	\$894.94
457369	36042	Double Cover w/ Black #212 and #212 Caps	\$894.94
457370	36052	Double Cover w/ Black #212 and #412 Caps	\$894.94
457371	36062	Double Cover w/ Black #212 and #481 Caps	\$894.94
457372	36092	Double Cover w/ Black #412 and #412 Caps	\$894.94
457373	36102	Double Cover w/ Black #412 and #481 Caps	\$894.94

#### Single and Double Roof Curbs for Single and Double Pipe Portals

- Portals Plus roof curbs designed to work with Portals Plus single and double pipe portals



HVAC No.	MFG Part No.	Description	Price
446981	32101	Straight Sided Curb, Small, 12" x 12" x 11"H	\$265.58
457343	32111	Canted Curb, Small, 12" x 12" x 8"H	\$395.28
457344	32121	Raised Canted Curb, Small, 12" x 12" x 9-1/2"H	\$395.28
457345	32131	Straight Sided Curb, Large, 20" x 20" x 11"H	\$640.36
457346	32141	Canted Curb, Large, 20" x 20" x 8"H	\$655.98
457347	32151	Raised Canted Curb, Large, 20" x 20" x 9-1/2"	\$655.98
457348	32161	Straight Sided Curb, Double, 27-1/2" x 12" x 11"H	\$706.96
457349	32171	Canted Curb, Double, 27-1/2" x 12" x 8"H	\$724.22
457350	32181	Raised Canted Curb, Double, 27-1/2" x 12" x 9-1/2"	\$724.22

#### Pipe Portal Components

HVAC No.	MFG Part No.	Description	Price
457327	29205	Small Single Cover, Fits #126 Cap	\$203.64
457335	29285	Small Single Cover, Fits #212, #412, #481 Caps	\$203.64
457328	29215	Black #126 Cap, w/ Clamps	\$165.08
457329	29225	Black #212 Cap, w/ Clamps	\$165.08
457330	29235	Black #412 Cap, w/ Clamps	\$165.08
457331	29245	Black #481 Cap, w/ Clamps	\$165.08
457332	29255	Black #182 Cap, w/ Clamps	\$338.04
457333	29265	White #126 Cap, w/ Clamps	\$190.30
457334	29275	White #212 Cap, w/ Clamps	\$190.30

## VENTILATION

### Portals Plus

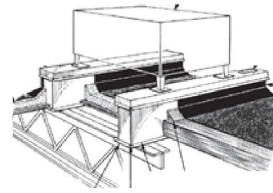
#### Portals Plus Roof Curb Pipe Portal Systems (Continued)

##### Pipe Portal Components

HVAC No.	MFG Part No.	Description	Price
457336	29295	Large Single Cover, Fits #182 Cap	\$307.06
457337	29305	Double Cover	\$619.62
458686	29431	Single Cover, Fits #555 Caps	\$291.62
458687	29432	Black #555 Caps, w/ Clamps	\$28.84

#### Portals Plus Equipment Rails

- Provides a uniform mounting pedestal for condenser, blowers and other roof mounted equipment
- High load bearing capacity due to welded internal gussets
- Available in a variety of heights and lengths



HVAC No.	MFG Part No.	Description	Price
457356	35231	Rail ER-2A, 12" High x 3' Long	\$521.60
457357	35241	Rail ER-2A, 12" High x 4' Long	\$672.50
457358	35261	Rail ER-2A, 12" High x 6' Long	\$1030.06
457359	35331	Rail ER-3A, 8" High x 3' Long	\$465.82
457360	35341	Rail ER-3A, 8" High x 4' Long	\$606.86
457361	35361	Rail ER-3A, 8" High x 6' Long	\$915.20
457362	35431	Rail ER 4A, 9-1/2" High x 3' Long	\$498.60
457363	35441	Rail ER 4A, 9-1/2" High x 4' Long	\$636.44
457364	35461	Rail ER 4A, 9-1/2" High x 6' Long	\$951.32

## VENTILATION

### Artis Metals

#### Wall Cap, Aluminum

- Aluminum vent hoods 4" - 12"
- Some models with screens and dampers



HVAC No.	MFG Part No.	Size	Description	Price
22321	SWVA 4	4"	With Screen	\$36.78
414390	DWVA 4	4"	With Damper	\$36.78
414391	DWVA 5	5"	With Damper	\$40.66
22322	SWVA 6	6"	With Screen	\$43.28
414392	DWVA 6	6"	With Damper	\$43.28
164037	DWVA 7	7"	With Damper	\$51.08
323851	SDWVA 7	7"	With Damper and Screen	\$50.28
22307	DWVA 8	8"	With Damper	\$56.30
22318	SDWVA 8	8"	With Damper and Screen	\$61.82
22323	SWVA 8	8"	With Screen	\$56.30
160380	SDWVA 10	10"	With Damper and Screen	\$103.60
22306	DWVA 10	10"	With Damper	\$98.78
22319	SWVA 10	10"	With Screen	\$98.78
22320	SWVA 12	12"	With Screen	\$118.94

#### Gravity Attic Ventilator, Galvanized



HVAC No.	MFG Part No.	Size	Description	Price
414789	JV 428 12CL	4"	Normal Clearance	\$41.40
414793	JV 428 HC	4"	Normal Clearance, With Downward Extension	\$34.84
322138	JV 626	6"	Normal Clearance	\$37.78
414800	JV 626 12CL	6"	With 12" Throat for Extra Clearance	\$53.12
414804	JV 626 HC	6"	Normal Clearance, With Downward Extension	\$47.08
414816	JV 826 12CL	8"	With 12" Throat for Extra Clearance	\$60.42
414820	JV 826 HC	8"	Normal Clearance with Downward Extension	\$53.50
414758	JV 1026	10"	Normal Clearance	\$66.76
414760	JV 1026 12CL	10"	With 12" Throat for Extra Clearance	\$84.38
414765	JV 1226	12"	Normal Clearance	\$82.36
414767	JV 1226 12CL	12"	With 12" Throat for Extra Clearance	\$101.46

#### Roof Mount Exhaust Vent With Screen

- Available in aluminum and galvanized
- Black available in some models



HVAC No.	MFG Part No.	Size	Description	Price
415039	RDVA 4	4"	Aluminum	\$65.52
415041	RDVA 6	6"	Aluminum	\$85.46
415052	RDVG 6	6"	Galvanized	\$76.32
415053	RDVG 610	6" x 10"	Galvanized, Painted Black	\$114.40
415042	RDVA 7	7"	Aluminum	\$106.62
415043	RDVA 8	8"	Aluminum	\$108.44
415055	RDVG 8	8"	Galvanized	\$96.84

## VENTILATION

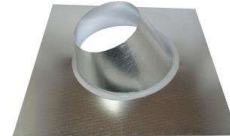
### Artis Metals

#### Roof Mount Exhaust Vent With Screen (Continued)

HVAC No.	MFG Part No.	Size	Description	Price
415049	RDBG 1010	10" x 10"	Galvanized, Painted Black	\$141.40

#### Flashing for 0/12 Pitch

- Available in 3" to 24" sizes
- Available for pitched or flat roofs



HVAC No.	MFG Part No.	Size	Description	Price
414488	FP 10	10"	Single Wall (Requires Storm Collar)	\$57.12
415123	SC 10	10"	Storm Collar for FP 10	\$19.42

#### Roof Cap for Fossil Fuel Chimneys

- Used to prevent downdrafts
- Available in galvanized, stainless and aluminum
- Sizes from 3" to 20"



HVAC No.	MFG Part No.	Size	Price
414634	GVC 1024	10" Galvanized	\$70.86

#### Backdraft Damper, Butterfly

- Available galvanized 4" to 24"



HVAC No.	MFG Part No.	Size	Price
322139	BD 6	6", Galvanized	\$33.82
414321	BD 7	7", Galvanized	\$40.54

#### Backdraft Damper, Offset Pin

- Galvanized 4" to 12"



HVAC No.	MFG Part No.	Size	Price
414861	OSP 4	4", Galvanized	\$40.84
414863	OSP 6	6" Galvanized	\$40.84

#### Fantech Backdraft Damper, Spring Loaded

HVAC No.	MFG Part No.	Size	Price
61955	RSK4	4"	\$40.80
61956	RSK5	5"	\$55.20
61957	RSK6	6"	\$60.00
61958	RSK8	8"	\$86.40
61953	RSK10	10"	\$100.80
61954	RSK12	12"	\$144.00
321826	RSK14	14"	\$284.96
321828	RSK16	16"	\$346.30

## VENTILATION

### Renewaire

#### Renewaire Energy Recovery Ventilator

- Available from 90-300 CFM
- Utilizes RenewAire's exceptional static plate energy exchange core
- Quiet, powerful blowers eliminate the need for air balancing in most applications
- Home Ventilating Institute verified performance
- No condensate or drain line
- No mounting restrictions, mount vertical or horizontal
- Integral mounting flanges are standard



HVAC No.	MFG Part No.	Size	Max Home Size	Price
361632	EV300	150-300 CFM	6000 Square Feet	\$2627.54
366540	EV130	50-140 CFM	2700 Square Feet	\$1882.64
390585	EV200	100-200 CFM	4000 Square Feet	\$2309.22
418523	EV90	90 CFM	2000 Square Feet	\$1614.04

#### Renewaire Accessory Items

- Wall caps, timers and backdraft dampers available for ventilators



HVAC No.	MFG Part No.	Description	Price
353129	BD8	Backdraft Damper, 8"	\$77.40
366542	FM	Percentage Timer Control With Furnace Interlock	\$188.22
389831	FA10-1	Wall Cap 10"	\$121.00
392221	FA12-1	Wall Cap, 12"	\$130.30
392231	TC7D-W	Programmable Time, Wall Mount	\$378.14
414312	BD10	Backdraft Damper, 10"	\$107.96
446237	PTL	Percentage Timer Control	\$155.56
446238	PBL	Push Button Timer, Room Mounted	\$67.70